

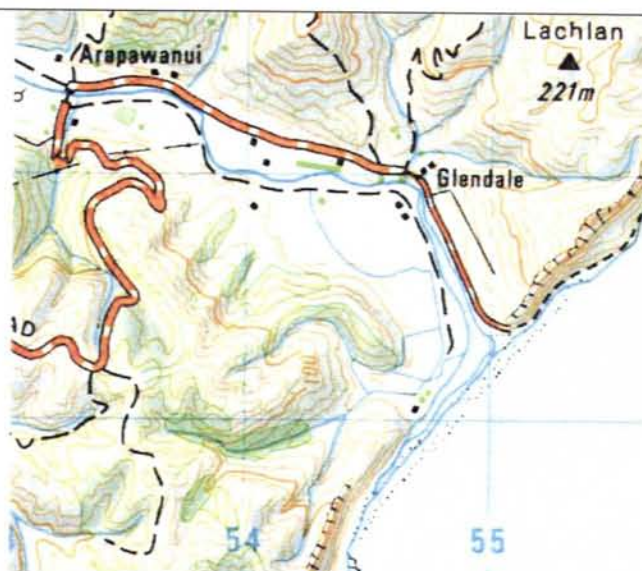
Aropaoanui

Setting

Aropaoanui is Hastings northern coastal surf beach accessible by public road. The sandy beach lies within an incised river valley. The beach is formed along the mouth of the stream, with the current discharge position to the south and a lagoon extends along the length of the beach.

Shoreline movement is likely to be significant due to the combination of beach and river processes, therefore the entire spit is subject to erosion hazard.

No exiting protection systems are insitu.



Hazard Description

CERZ	42.0 m
ERZ 2060	3 m
ERZ 2100	4 m
Total Erosion Zone width	Entire spit
Sea Inundation level (CERZ)	15.5 m
Sea Inundation level landward of CERZ	13.8 m

Potential Risk

Likelihood	Consequence	Risk
Unlikely	Minor	Low
Possible	Minor	Moderate
Likely	Insignificant	Moderate
Certain	Insignificant	Moderate

Uncertainties

Inferred trends due to no local data

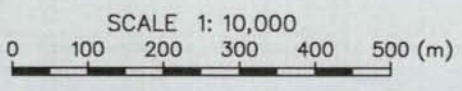
Uncertainties over future climate change impacts

Recommendations

- No further modification of land designation permitted within hazard zones
- Dune vegetation and access management
- Monitor shoreline change

LEGEND

- Baseline
- Current Erosion Risk Zone
- - - Erosion Risk Zone 2080
- - - Erosion Risk Zone 2100
- ⋯ River Mouth
- CRS Property Boundaries
- - - Industrial /Residential Areas



Notes: 1. Coastal property boundaries supplied by HBRC (DCDB)
 2. Aerial photos\Topomaps sourced from Land Information New Zealand Data, Crown Copyright Reserved

L:\205 14\205 14-F7.dwg 7.27 02-Feb-04 - 8:38am btd



Tonkin & Taylor
 Environmental & Engineering Consultants

Hamilton Auckland Christchurch
 Nelson Wellington Whangarei

DRAWN	BKD	Sep.03
DRAFTING CHECKED		
APPROVED		
CADFILE : L:\205 14\205 14-F7		
SCALES (AT A4 SIZE)		
1: 10 000		
PROJECT No.	205 14	

HAWKES BAY REGIONAL COUNCIL
 REGIONAL COASTAL HAZARD ASSESSMENT
 HAZARD ZONE DEFINITIONS
 Aropaoanui