

Aramoana

Setting

Aramoana is set between two large hills that provide some form of headland control. The foreshore is an area of significance with regard to wildlife habitat and ecosystems. The area comprises a perched beach with a broad intertidal system a moderate width dune system and a wetland to the north. The dune elevation is moderate to low with a crest elevation of around 1.5 m.



Existing farm buildings present along with a new subdivision currently in progress. Building platform levels of 12.5 m RL and a set back of more than 40 m from existing shore. No coastal protection structures insitu.

Hazard Description

Potential Risk

Hazard Description		Potential Risk		
		Likelihood	Consequence	Risk
CERZ	43.0 m	Unlikely	Major	High
ERZ 2060	14 m			
ERZ 2100	16 m	Possible	Moderate	Moderate
Total Erosion Zone width	73 m			
Sea Inundation level (CERZ)	16.2 m	Likely	Minor	Moderate
Sea Inundation level landward of CERZ	14.0 m			
		Certain	Minor	High

Uncertainties








Inferred trends due to no local data

Uncertainties over future climate change impacts

Recommendations

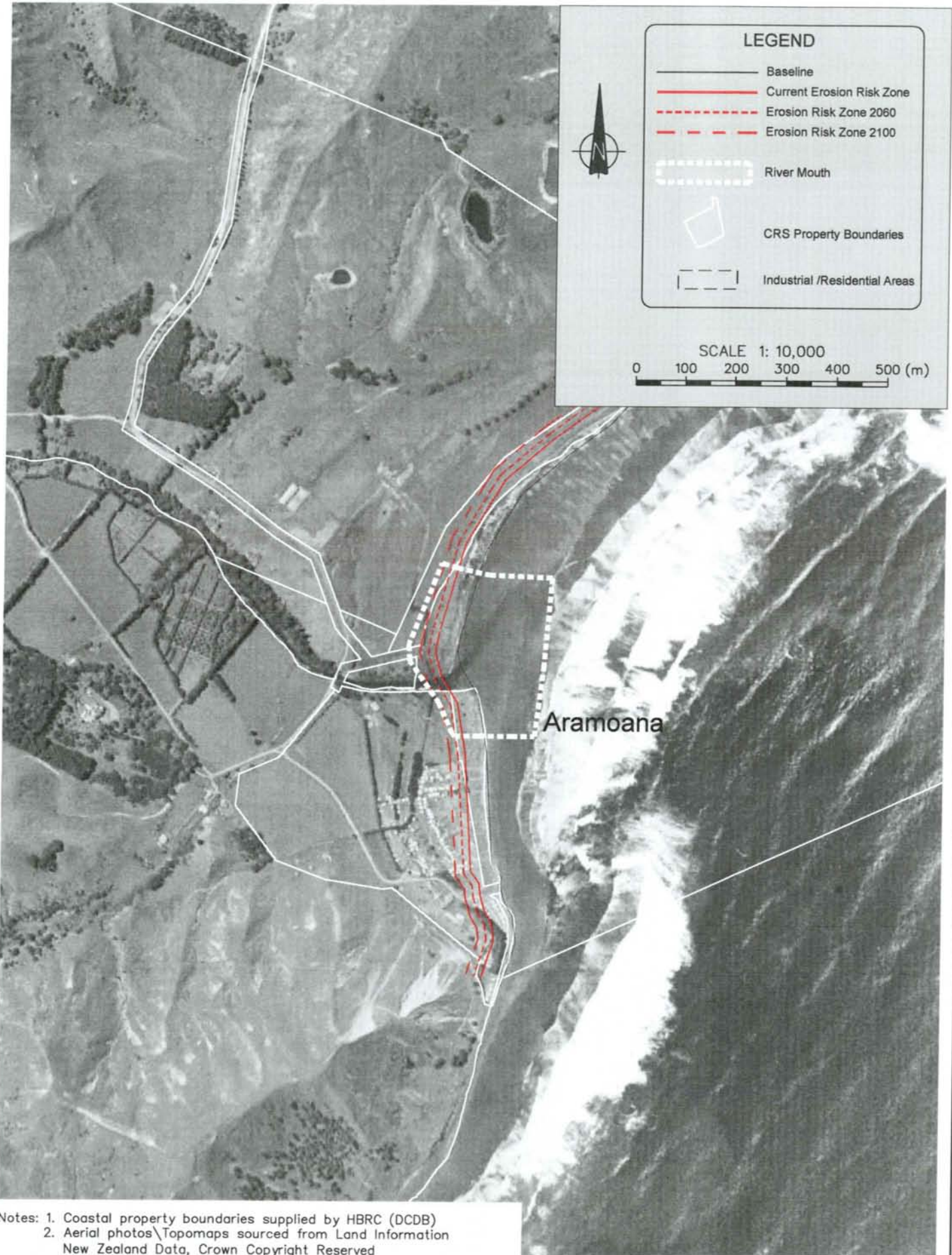
- No new council infrastructure or new private development to be located within the CERZ
- Establish redevelopment plans for existing dwellings within CERZ, including alternative locations for camp ground
- All new private development within remaining Erosion Hazard Zone to be relocatable and above inundation levels.
- No further modification of land designation permitted in currently non-residential zoned land within hazard zones
- Dune restoration (re-vegetation) with assistance of community based coast care groups
- Inundation protection bund to be considered at edge of subdivision should climate change result in increasing SLR
- Control of access and monitor shoreline change

LEGEND

-  Baseline
-  Current Erosion Risk Zone
-  Erosion Risk Zone 2060
-  Erosion Risk Zone 2100
-  River Mouth
-  CRS Property Boundaries
-  Industrial /Residential Areas



SCALE 1: 10,000
 0 100 200 300 400 500 (m)



Aramoana

Notes: 1. Coastal property boundaries supplied by HBRC (DCDB)
 2. Aerial photos\Topomaps sourced from Land Information New Zealand Data, Crown Copyright Reserved

L:\205 14\205 14-F7.dwg 7.03 02-Feb-04 - 7:25am bld



Tonkin & Taylor
 Environmental & Engineering Consultants

Hamilton Auckland Christchurch
 Nelson Wellington Whangarei

DRAWN	BKD	Sep.03
DRAFTING CHECKED		
APPROVED		
CADFILE :		
L: \205 14\205 14-F7		
SCALES (AT A4 SIZE)		
1: 10 000		
PROJECT No.	205 14	

HAWKES BAY REGIONAL COUNCIL
 REGIONAL COASTAL HAZARD ASSESSMENT
 HAZARD ZONE DEFINITIONS
 Aramoana

FIG. No. **Figure 7.03**

REV. **1**