

## Bayview

### Setting

Bayview is a largely urban area situated along the southern end of a long gravel barrier beach ridge midway between the Ahuriri Lagoon entrance and the Esk River mouth. The beach comprises a mix of sand and gravel and currently appears in a healthy state.

Shoreline trends are inferred from profile HB15 and HB16.



### Hazard Description

### Potential Risk

		Likelihood	Consequence	Risk
CERZ	69 m to 74 m	Unlikely	Major	High
ERZ 2060	4 m			
ERZ 2100	8 m	Possible	Moderate	High
Total Erosion Zone width	81 m to 86 m			
Sea Inundation level (CERZ)	15.3 m to 15.5 m	Likely	Minor	High
Sea Inundation level landward of CERZ	13.7 m to 13.8 m	Certain	Minor	High

### Uncertainties

Uncertainties over future climate change impacts

### Recommendations

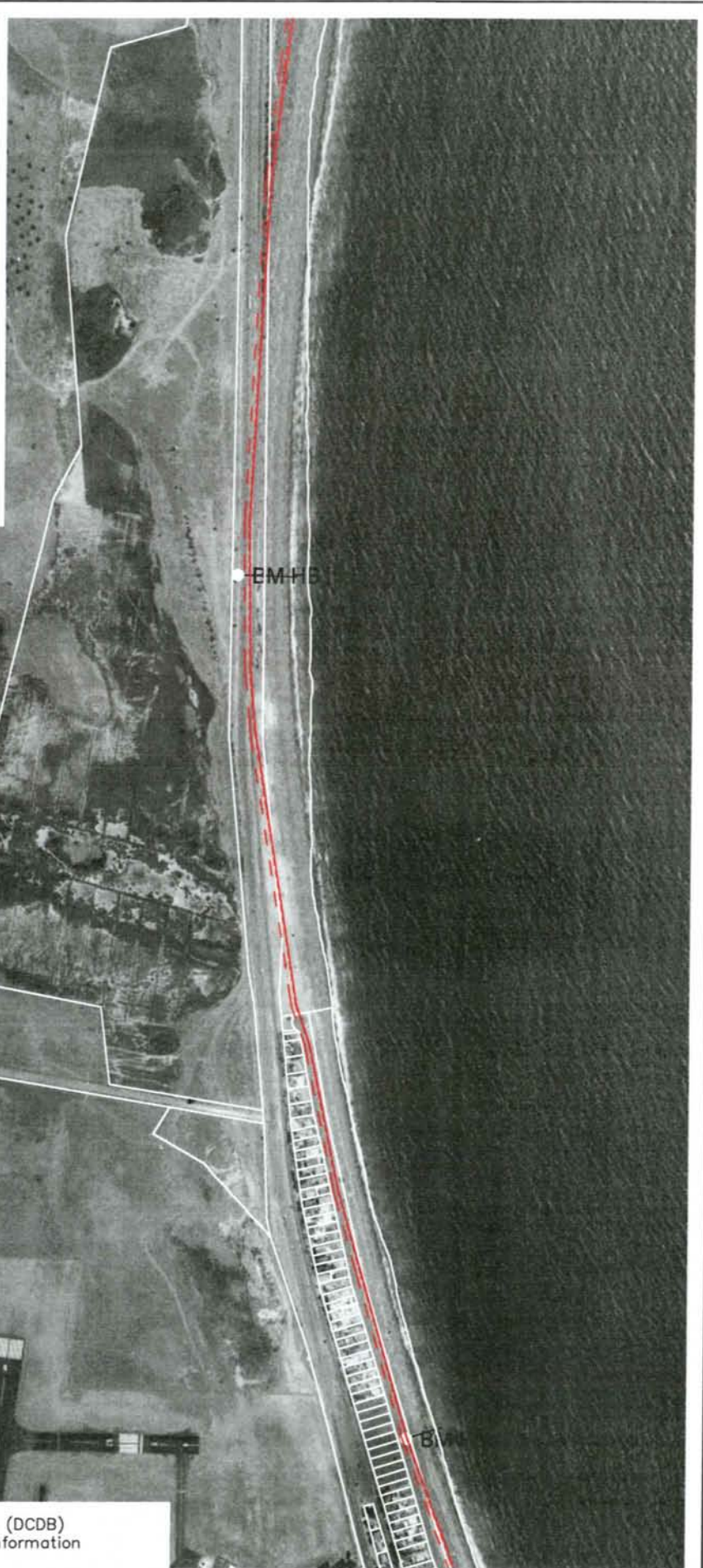
- No new council infrastructure or new private development to be located within the CERZ
- All new private development within remaining Erosion Hazard Zone to be relocatable and above inundation levels or be provided with flood protection bund subject to confirmation of no adverse effect on catchment flooding.
- Dune crest enhancement/vegetation control
- No further modification of land designation permitted in currently non-residential zoned land within hazard zones

**LEGEND**

- BM11 Benchmarks
- Coastline
- Current Erosion Risk Zone
- - - Erosion Risk Zone 2060
- - - Erosion Risk Zone 2100
- ⋯ River Mouth
- CRS Property Boundaries
- - - Industrial /Residential Areas

SCALE 1: 10,000

0 100 200 300 400 500 (m)



Notes: 1. Coastal property boundaries supplied by HBRC (DCDB)  
 2. Aerial photos\Topomaps sourced from Land Information New Zealand Data, Crown Copyright Reserved

L:\20514\20514-F7.dwg 7.20 02-Feb-04 - B. Dam bld



**Tonkin & Taylor**  
 Environmental & Engineering Consultants

- Hamilton
- Auckland
- Christchurch
- Nelson
- Wellington
- Whangarei

DRAWN	BKD	Sep.03
DRAFTING CHECKED		
APPROVED		
CADFILE : L:\20514\20514-F7		
SCALES (AT A4 SIZE)		
1: 10 000		
PROJECT No.	205 14	

**HAWKES BAY REGIONAL COUNCIL**  
 REGIONAL COASTAL HAZARD ASSESSMENT  
 HAZARD ZONE DEFINITIONS  
 Bayview (Sheet 1 of 2)

FIG. No. Figure 7.20

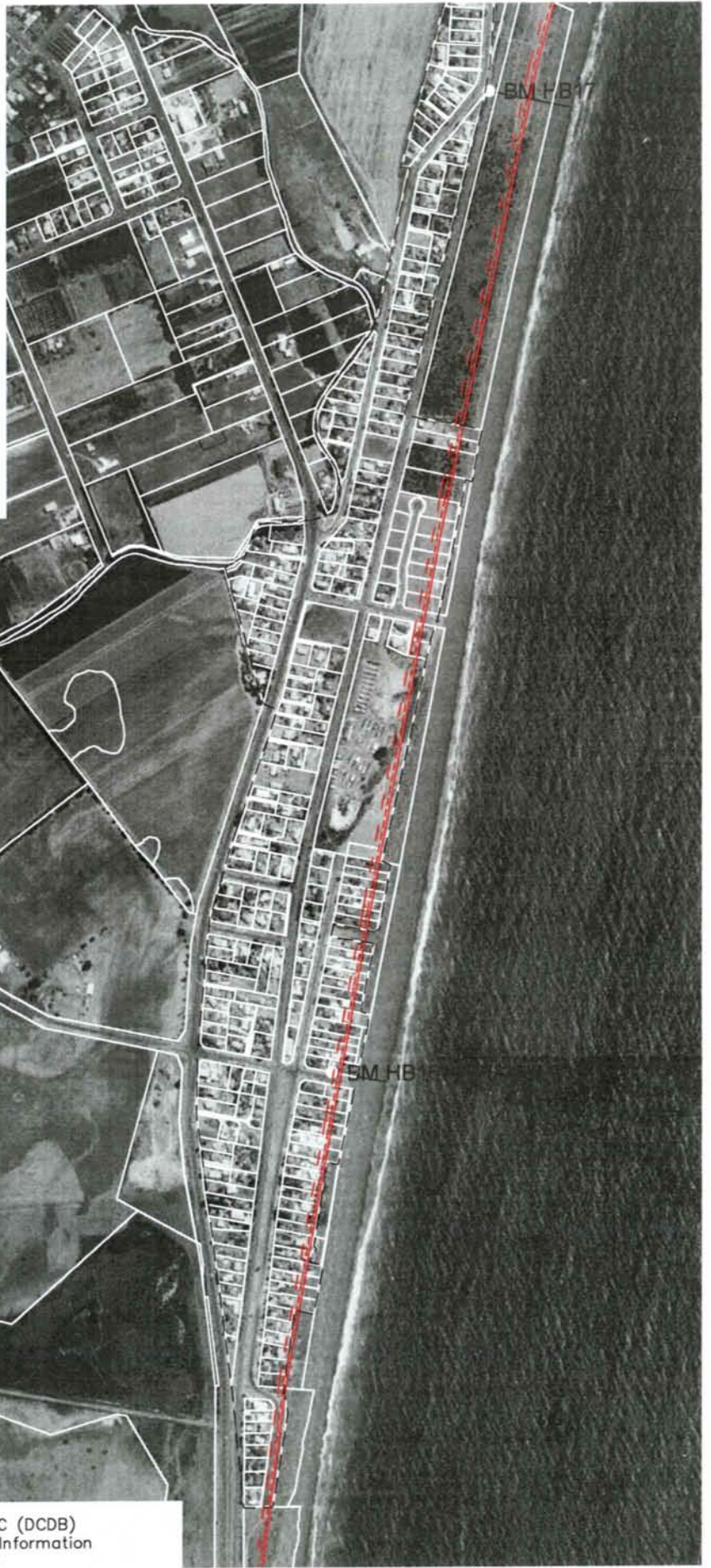
REV. 1

**LEGEND**

- BM11 Benchmarks
- Coastline
- Current Erosion Risk Zone
- - - Erosion Risk Zone 2060
- - - Erosion Risk Zone 2100
- ⋯ River Mouth
- CRS Property Boundaries
- ⋯ Industrial / Residential Areas

SCALE 1: 10,000

0 100 200 300 400 500 (m)



Notes: 1. Coastal property boundaries supplied by HBRC (DCDB)  
 2. Aerial photos\Topomaps sourced from Land Information New Zealand Data, Crown Copyright Reserved

L:\205 14\205 14-F7.dwg 7.21 02-Feb-04 - B:4 tom bkd

**Tonkin & Taylor**  
 Environmental & Engineering Consultants

Hamilton     Auckland     Christchurch  
 Nelson        Wellington    Whangarei

DRAWN	BKD	Sep.03
DRAFTING CHECKED		
APPROVED		
CADFILE :		
L:\205 14\205 14-F7		
SCALES (AT A4 SIZE)		
1: 10 000		
PROJECT No.		
205 14		

**HAWKES BAY REGIONAL COUNCIL**  
**REGIONAL COASTAL HAZARD ASSESSMENT**  
**HAZARD ZONE DEFINITIONS**  
 Bayview (Sheet 2 of 2)