

Westshore

Setting

Westshore is an urban area situated at the southern end of a long gravel barrier beach ridge at the entrance to the Ahuriri Lagoon. The beach comprises a mix of sand and gravel. Currently the beach and subtidal area are nourished from gravel transfer south of the Port and from dredging of the Port's access channel.



Shoreline trends are inferred from profile HB13 to HB14. Historic trends of erosion appear largely to be moderated by ongoing beach replenishment.

Hazard Description

Potential Risk

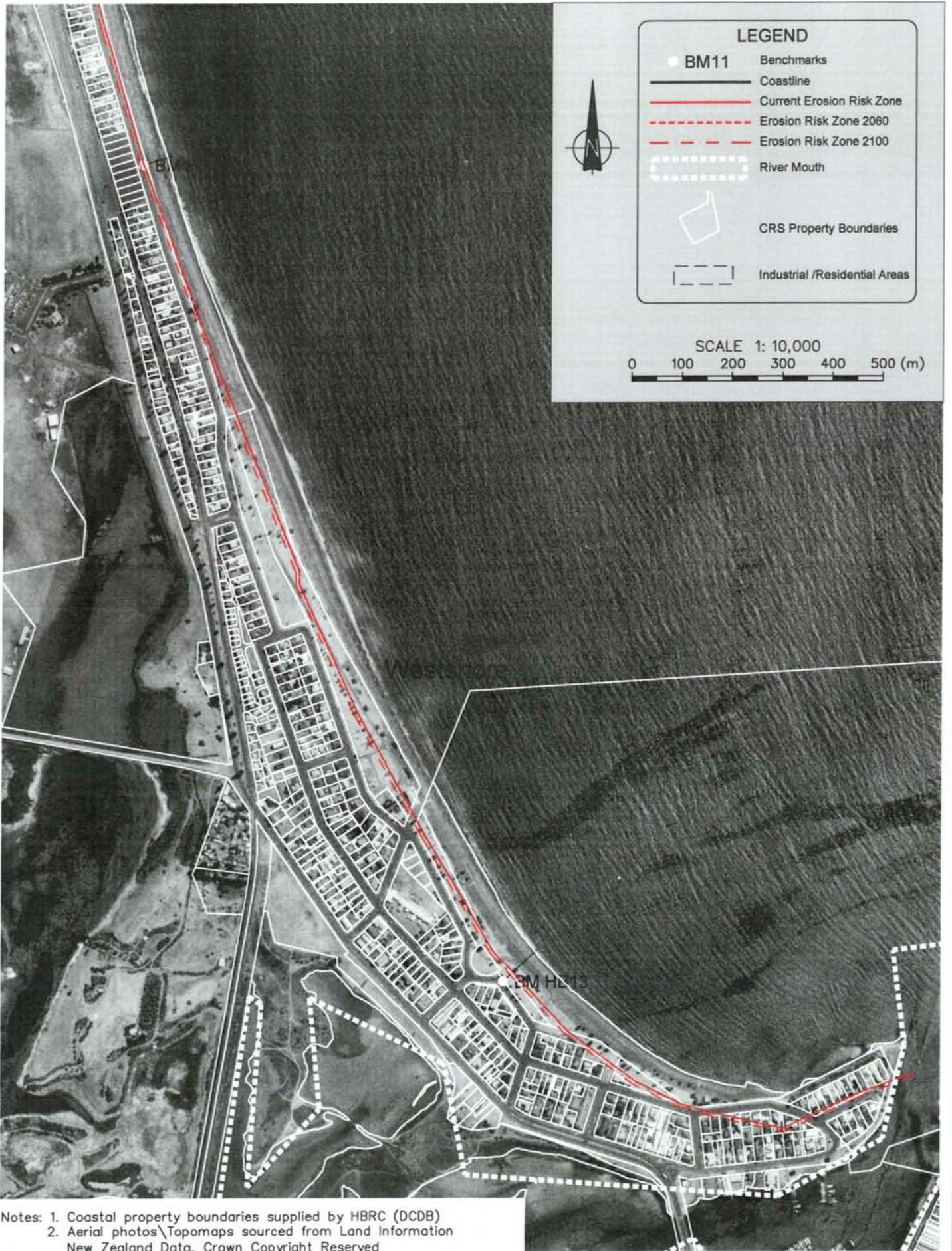
		Likelihood	Consequence	Risk
CERZ	35 m to 60 m	Unlikely	Major	High
ERZ 2060	1 m to 2 m			
ERZ 2100	7 m	Possible	Major	Extreme
Total Erosion Zone width	43 m to 69 m			
Sea Inundation level (CERZ)	14.9 m to 15.3 m	Likely	Moderate	High
Sea Inundation level landward of CERZ	13.5 m to 13.7 m	Certain	Moderate	Extreme

Uncertainties

Uncertainties over future climate change impacts

Recommendations

- No new council infrastructure or new private development to be located within the CERZ
- All new private development within remaining Erosion Hazard Zone to be relocatable and above inundation levels or be provided with flood protection bund subject to confirmation of no adverse effect on catchment flooding.
- No further modification of land designation permitted in currently non-residential zoned land within hazard zones
- Dune crest enhancement/vegetation control
- Monitor shoreline change and effectiveness of sand and gravel replenishment for 5 years prior to implementation of additional protection works



Notes: 1. Coastal property boundaries supplied by HBRC (DCDB)
 2. Aerial photos\Topomaps sourced from Land Information New Zealand Data, Crown Copyright Reserved

L:\205 14\205 14-F7.dwg 7:19 02-Feb-04 - B:11am bkd



Tonkin & Taylor

Environmental & Engineering Consultants

- Auckland
- Hamilton
- Nelson
- Wellington
- Christchurch
- Whangarei

DRAWN	BKD	Sep.03
DRAFTING CHECKED		
APPROVED		
CADFILE : L:\205 14\205 14-F7		
SCALES (AT A4 SIZE)		
1: 10 000		
PROJECT No. 205 14		

HAWKES BAY REGIONAL COUNCIL
REGIONAL COASTAL HAZARD ASSESSMENT
HAZARD ZONE DEFINITIONS
 Westshore

FIG. No. **Figure 7.19**

REV. **1**