



## OTHER INFORMATION

## Part 6

### Contents

Hawke's Bay Region – A Profile .....	1
Development of Māori Capacity to Contribute to Decision-Making Processes ..	8
Council & Committee Structure .....	11
Management Structure .....	15
Your Regional Councillors.....	16



### Hawke's Bay Region – A Profile

#### Our Physical Environment

The Hawke's Bay region covers a total land area of approx 1.42 million hectares, encompassing Wairoa District, Napier City, Hastings District, Central Hawke's Bay District, and parts of Rangitikei and Taupo Districts.

The main cities are Hastings and Napier, and main towns Waipukurau, Waipawa and Wairoa, with other sizable settlements throughout the region.

The Hawke's Bay climate is generally dry and temperate while the region also experiences the greatest percentage variation in rainfall in New Zealand. There are periods of both drought and high rainfall, with much higher rainfall in the ranges than along the coast.

The region has relatively clean water and good soil, relatively low population density and a small number of major industrial emissions. Air quality is generally good although there are significant air quality issues in winter within the Napier/Hastings area.

The area includes 24 river catchments comprising 7 major rivers (Wairoa, Mohaka, Esk, Tutaekuri, Ngaruroro, Tukituki and Waipawa) and numerous smaller rivers and streams.

Lake Waikaremoana is the major inland water feature. Other major lakes are Waikareiti, Tutira, Poukawa and Hatuma. Significant wetland areas include coastal estuaries, the Pekapeka wetland and coastal lagoons east of Wairoa including Lake Whakaki.

Extensive aquifer systems under the Heretaunga and Ruataniwha Plains, and smaller systems in other areas, provide groundwater for residential, irrigation and industrial purposes.

As a result of the climate and reliable groundwater supplies, the Heretaunga, Ruataniwha and Takapau river plains are the traditional base for much of Hawke's Bay's fruit and horticultural production and, more recently, wine industry.

Pastoral farming is based mainly on hill country, with forestry located on steeper hill country to the north and west of the region.

Most parts of the region have a significant primary production and processing base. The Napier/Hastings area is the location for most of the region's major service industries.

There are many notable regional landmarks of cultural and scenic significance, including Te Urewera National Park, Mahia Peninsula, Cape Kidnappers with its major gannet colony, the major western ranges and Te Mata Peak.

Important environmental reserve areas include the Te Urewera National Park, Boundary Stream (a 700 hectare reserve north-west of Napier), many bush remnant areas, Ruahine and Kaweka Forest Parks, Whakaki, Ahuriri, Waitangi, Pekapeka and Hatuma wetlands, Lake Tutira with its wildlife reserve and country park, Cape Kidnappers and Te Mata Peak which is highly accessible to urban residents.

Hawke's Bay has varied coastal resources, comprising deep offshore open waters, a shallower continental shelf, and a mixed and changing coastline of dune lands, sandy and gravel beaches, estuaries, reefs and rock platforms.

The region has been and will continue to be at risk from major natural events which pose a hazard to human life and property. Flooding, earthquakes, tsunami, volcanic eruptions, storms and high winds have all occurred over relatively recent times.

#### Hawke's Bay Environmental Issues

The operational activities of the Hawke's Bay Regional Council include environmental management, land drainage and river control, biosecurity (animal and plant pest control), natural hazard management and land transport planning.

The Council's resource management plans indicate a number of regionally significant issues in Hawke's Bay. These include:



## OTHER INFORMATION

Part 6  
2

- Integrating the management of coastal resources across a range of natural and physical conditions, administrative responsibilities and cultural conditions
- The loss and degradation of soil and soil health through hill country erosion, wind erosion and inappropriate land management practices
- The scarcity of native vegetation, fauna habitats and wetlands because of vegetation clearance and land drainage
- The environmental effects of conflicting land use
- The risk of groundwater contamination or over-use
- The risk of surface water contamination or over-use
- The impact of natural hazards
- Keeping the region's physical infrastructure operating for the wellbeing of the region
- The management of water both in the wider landscape and for irrigation demand.

### Our Society

#### Population

The current Hawke's Bay population of 152,700 represents 3.6% of the national total. Over the 2001-2006 intercensal period, the region's population increased by 4800, or 3.3%. Since the 2006 Census, the region's population has increased by a further 600 or 0.4%. Since 2001, the region's population has risen by 3.7%, compared to the national gain of 10%. Population growth in the area has therefore been significantly below the national rate.

The combined Napier City/ Hastings District territorial local authority area presently accounts for 86% of the total regional population. The combined Napier and Hastings urban (built-up) areas account for 80%.

The table below shows Statistics New Zealand population changes within the Hawke's Bay region since the 2001 Census, as well as the Department's estimated medium or 'middle of the road' growth projection for Year 2021:

#### Hawke's Bay Local Authority Population Change 2001-2021

Area	Estimated Resident Population			Projected Population 2021	Numerical Change 2008-2021
	2001	2006	2008		
Wairoa District	9,260	8,720	8,480	7,700	-780
Napier City	55,200	56,800	56,900	58,300	+1400
Hastings District	69,600	73,200	73,800	78,800	+5000
CHB District	13,200	13,250	13,300	13,100	-200
Other HB Region	40	130	220	200	-20
Hawke's Bay Region	147,300	152,100	152,700	158,100	5,400
New Zealand	3,880,500	4,184,600	4,268,600	4,770,800	502,200

Population growth has been positive over the last seven years in Napier/Hastings/Central Hawke's Bay but negative in Wairoa district. Over the next 13 years, the total Hawke's Bay population is projected to increase by 5,400 or 3.5%. Positive population growth is projected for Hastings District and, to a lesser extent, Napier City.

At the time of the 2006 Census, the broad ethnic profile of the regional population was European 69%, Māori 24% and 7% other ethnicities. The Māori population concentration is highest in Wairoa (52% of the district population) and Hastings (21%). Over the 2006-2021 period, projected population growth for the different ethnic groups in Hawke's Bay is European 0.3%, Māori 17.9%, other Pacific Island peoples 47.5% and Asian People



## OTHER INFORMATION

53.8% (the growth for the latter two groupings is off a relatively low population base).

The current broad age-profile of the Hawke's Bay population is 0-4 years at 7% of the total population, 5-14 years 16%, 15-29 years 18%, 30-49 years 28%, 50-59 years 13% and 60+ years 18%. Since 2001, the average age of the population has increased from 35 to 37 years and is expected to reach 42 years in 2021. The age-group projected to record the largest population gain over the 2006-2021 period is 65+ (52%) and 40-64 (4%) whilst the 0-14 and 15-39 age-groups are projected to record population declines over 6%.

### Households

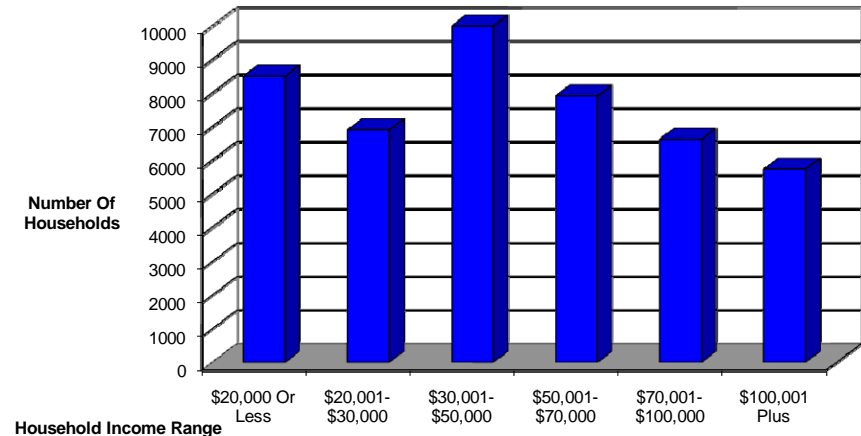
At the end of September 2008, the total number of dwellings/households in Hawke's Bay stood at approximately 62,345. This represents an increase of 2,063 or 3.4% on the Census 2006 total. Over 2008-2021, the number of households in the region is projected to increase by approximately 9%.

The number of single-person households is projected to increase by 25%, with the number of households comprising a family unit increasing by 4%. The number of families comprising 'couples without children' is projected to increase by 29% and single-parent families by 3%. The number of two-parent families with children is projected to fall by 22%.

Hawke's Bay is noticeably behind the national average for all main income indicators. Nearly 30% of all adult income-earners in the region had a personal income of \$20,000 or less in the year prior to the 2006 Census, reflecting the significant influence of part-time and seasonal work, the service-dominated economy, superannuitant numbers and beneficiary incomes.

The graph below indicates the gross household income profile of the working-age population, for the same period. The leading income groups were \$30,001-\$50,000; \$20,001 or less; and \$50,001-\$70,000, in this order.

**Hawkes Bay Region 2006 Census Annual Household Income Profile**



In March 2008, average hourly earnings in Hawke's Bay stood at \$22.04, compared to \$23.66 for New Zealand as a whole.

### Community

This section indicates a number of recent trends and the current situation in Hawke's Bay in relation to the region's general social and economic well-being. The points presented are sourced from the Ministry of Social Development's latest (2008) national social report and a recent Hawke's Bay local government monitoring report on community outcomes progress in the region:

- The overall economic standard of living in the region has improved by an estimated 20% over the past five years, underpinned by the prevailing good economic and employment conditions. However, the proportion of the regional population on low incomes, whilst having fallen steadily since the mid 1990s, is still significantly higher than at the national level. The level of low-income earning is particularly apparent for the Māori



and Pacific Peoples communities, the 65+ age-group and the female population.

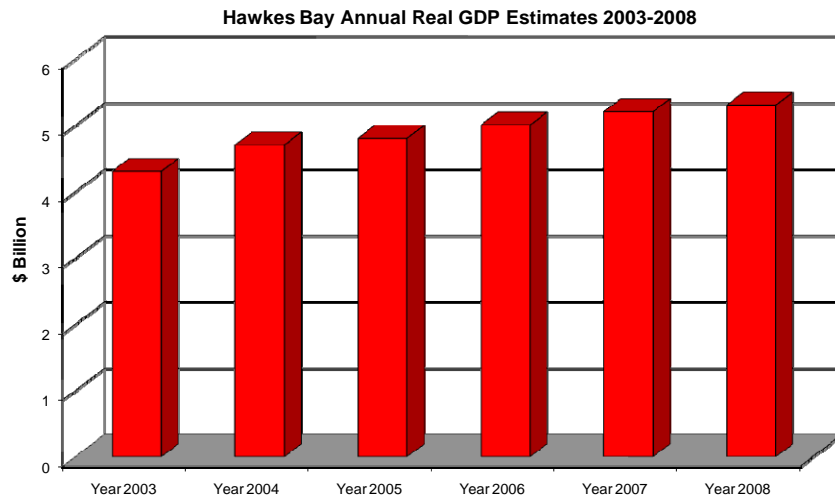
- Over a third of the population at the time of the 2006 Census were in the most deprived socio-economic deprivation categories. The geographical focus of this deprivation was primarily Wairoa district, parts of the Napier/Hastings urban area (e.g. Maraenui/general Flaxmere area) and Porangahau in the Central Hawke's Bay district.
- Life expectancy in the region in 2002 was slightly behind the national figure. Since that time there has been a further noticeable increase in life expectancy across the country for both males and females. Over the past five years, there have been gains in the region in relation to health determinants such as fruit consumption, physical activity and reduced obesity, the level of hazardous drinking and the prevalence of diabetes; however, the level of vegetable consumption and regular smoking are still issues of concern. The regional situation in respect of general rates of immunisation, falls-related hospitalisation for over 65s, proportion of health promoting schools, adolescent use of the regional oral health service and hospitalisation of 0-4 year olds for various reasons (e.g. falls/ burns) has improved over the period.
- The rate of early childhood education has fallen a little since 2005. At the same time, the proportion of school-leavers with higher educational qualifications (NCEA Level 2 and above) has increased significantly, particularly for Māori and Pacific students. The proportion of the working-age population with tertiary level qualifications rose from 18% in 2001 to 23% in 2006, whilst university-level achievement rose from 6% to 9%. Māori upper secondary school and tertiary level educational attainment has improved noticeably over the past five years.
- The level of household crowding in Hawke's Bay has fallen long-term and at the time of the 2006 Census was on par with the national level. Over 2007, the rate of recorded criminal offending in the region fell slightly following a two-year period of increase. General dishonesty offences account for almost half of all recorded crime in the region but this category of crime has fallen significantly over time as a proportion of total criminal offending. The rate of motor vehicle related deaths/injuries on Hawke's Bay roads has fallen over the past two years.

- Between 2001 and 2006, the level of household-based internet access in the region increased sharply from 35% of the population to 59%, while telephone access remained high at over 90% and increased two percentage points.

### Our Economy

#### Economic Growth

Total GDP (Gross Domestic Product)/economic activity in Hawke's Bay presently stands at an estimated \$6.3 Billion or approximately 4.4% of total New Zealand GDP. Over the past five years total regional GDP has increased in real inflation-adjusted terms by approximately 25%. The graph below indicates the annual levels of real GDP in the region, since 2003. Economic activity has increased steadily over the period. The annual rate of growth during the latest June 2008 year was in the order of 2%, half the level of annual growth over the previous two years. The NZ Institute of Economic Research is currently forecasting average annual economic growth in the Hawke's Bay/ Gisborne region of 1.8% over the next five years, compared to 2.1% for the 2003-2008 period. The Institute has sharply reduced its growth forecasts for the region since early 2008, in line with expected adverse impacts within New Zealand from the major international financial and economic upheavals that occurred during 2008.



During the year to September 2008, the following economic indicator changes were recorded for Hawke's Bay:

- The indicators which have grown include the value of all new buildings receiving consent, the value of all new commercial/industrial buildings approved, actual retail sales, the median house sale price and employment
- Indicators which have fallen include the volume of all new building work receiving consent, house sales, new motor vehicle registrations, Port of Napier international trade tonnages and visitor/tourism activity
- The fall in indicator economic activity over the past year has been broadly similar to the national decline. Employment growth in the region was noticeably above the national gain. The increase in retail sales was less than at the national level whilst the fall in regional tourism activity in Hawke's Bay was in contrast to the slight national-level increase.

### Industry

The largest industry sectors in Hawke's Bay in terms of their contribution to total economic activity are primary industries production,

processing/manufacturing, property and business services, retail, health and community services, construction and wholesaling.

Within the primary industries sector, the key GDP/production activities are, in order, pastoral farming/fruit/horticulture and forestry/logging. The leading processing/manufacturing activities are food and beverage production, wood manufacturing, manufacturing of machinery and equipment, textile processing and the manufacturing of metal products. The leading service sector industries in the region in GDP terms are property and business services, retail, health/community services, construction, wholesaling and public sector administration.

Over the past year, the strongest GDP growth was recorded by the regional primary production, construction, processing/manufacturing and power supply industries. Growth decline was most noticeable for educational services, wholesaling, the public sector and communication services.

Over the next five years, the NZ Institute of Economic Research is forecasting the strongest growth nationally for the communications, agricultural, machinery/equipment manufacturing, education, health, metal product manufacturing, business service, wholesale trade and transport/storage industries. These sectors are all important components of the Hawke's Bay economy and will help to underpin its performance over the period. The region's key primary production sector is expected to face tight business conditions over the shorter-term though as a result of the prevailing difficult world financial and economic conditions. This situation will have flow-on impacts to regional firms servicing the sector and also primary product processing enterprises in the area.

Consistent with the marked slow-down in activity levels over the past year, the construction sector is expected to remain relatively subdued over the coming year, although the low interest rate environment, increased demand for building alterations and demographic changes should assist overall growth in the sector. Retail sector activity in the short-term will be assisted by the 2008/09 traditional summer lift in economic activity in Hawke's Bay, as well as the impact of the additional taxation cuts in April 2008 and reduced petrol prices. The tight international and domestic economic



## OTHER INFORMATION

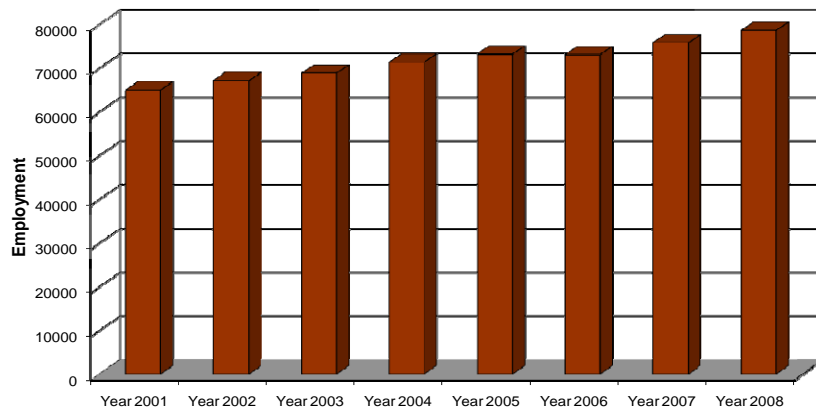
situation is likely to subdue tourism activity in the region over the coming year. The relatively limited population, household and economic growth forecast for the region over the next five years is likely to see a commensurate level of growth in the broad service industries sector in the region, although there will be exceptions such as economic activities servicing the needs of an aging population and increased demand for primary school educational services.

### Employment

To September 2008, total employment in Hawke’s Bay stood at 78,593 or 3.4% of the New Zealand total.

The graph below indicates the trend in annualised employment growth in the region, since Year 2001. Employment growth has increased steadily over the period and overall by 21% or at an average annual rate of approximately 3%. However, given the forecast significant slowing of economic growth in the medium-term, this is expected to constrain future annual average employment growth in the area to around half the above rate.

Hawkes Bay Total Employment Trend 2001-2008

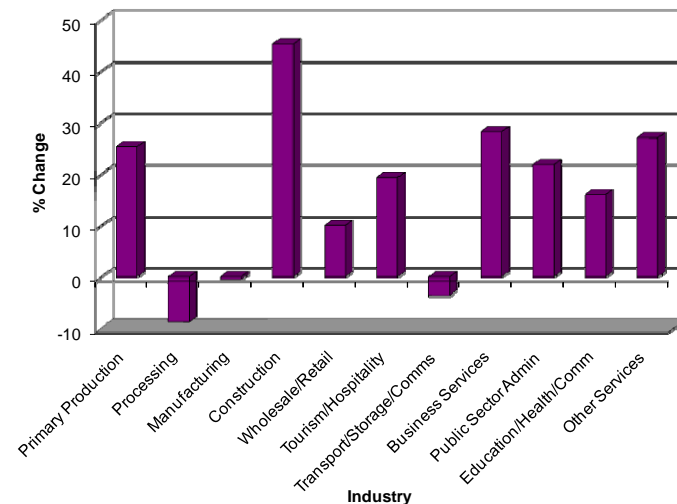


The key employing industry sectors in Hawke’s Bay at present are primary production (17% of total industry employment in the region), retail and wholesaling 16%, processing and manufacturing 15%, property and business services 11%, and construction/health-community services (9% each). Other industry employment contributions to note are tourism and hospitality services 5% and transport/storage constituting 3% of total industry employment.

At a more detailed level, the leading individual employing activities in the region are fruit growing, school based education, agricultural services, meat processing, sheep/beef farming, cafes/restaurants, residential care services, packaging/labelling services, pre-school education and fruit/vegetable processing in this order.

The graph below shows the change in employment for the different main sectors in Hawke’s Bay over the past five years. All sectors other than primary product processing, manufacturing and transport/storage/communications grew their employment base over the period. The largest gains were recorded by construction, business services, primary industries production, the public sector and tourism/hospitality services.

Hawkes Bay Industry Employment Change 2003-2008





September 2008 Statistics New Zealand household labour-force survey results implied that unemployment in Hawke's Bay stood at some 4,620, representing an increase of 1,540 or 50% since September 2006. The rate of unemployment increased over the period from 4% in September 2006 to 5.5% in September 2008. The national unemployment rate in September 2008 stood at 4%, compared to 3.6% in September 2006. Hawke's Bay had the third highest regional rate of unemployment in the country in September 2008, after the Gisborne and Northland areas. Unemployment is expected to remain relatively high in the region over the short-medium term, given the prevailing difficult international and domestic economic conditions. At the same time, Hawke's Bay will continue to face particular labour-market challenges such as meeting its seasonal labour requirements for the fruit and horticultural industries and addressing its skilled labour needs across a range of different employing activities.

### Our Culture and Heritage

The key aspects of the region's cultural identity include its significant Māori history and contribution, European history since settlement, strong rural orientation to pastoral farming and horticulture, the impact of the 1931 earthquake and subsequent rebuilding of the affected parts of the region, the impact of flood events on the shaping of the plains, and the emergence of the tourism industry.

The key cultural assets of the Hawke's Bay region include:

- The ongoing work of the Hawke's Bay Museum and Art Gallery, Hastings City Art Gallery as key cultural/arts leadership organisations in the Hawke's Bay region.
- Committed people actively involved in the development and preservation of their cultural heritage and related activities, including the Creative Napier, Creative Hastings, and Creative Hawke's Bay organisations and Hawke's Bay Arts Trail.
- Annual programmes of regional and local events, including the Wine and Food Weekend, Art Deco Weekends, WETA Weekend in Central Hawke's Bay, Gifted Sands in Wairoa and Takitimu Māori Music Festival, plus

other art and music festivals including Big Sing and Kids Sing (school choral events)

- Hosting of national arts events such as the National Singing School, National Highland Games and National Youth Drama School.
- Regional art galleries and museums, including the Hawke's Bay Museum and Art Gallery's extensive Ngati Kahungunu taonga collection.
- Regional libraries, public reserves, and recreational areas.
- A strong ethic to preserve historic buildings in a range of architecture styles including Victorian, Art Deco, Spanish Mission and Modernist.
- Important Māori sites and sacred areas.
- Performance venues including a number to national standards (e.g. Napier Municipal Theatre and Hawke's Bay Opera House) and many wineries for outdoor events.
- Te Wananga Whare Tapere O Takitimu performing arts school and professional company.
- EIT Hawke's Bay's visual arts and design, Māori studies and tourism/hospitality departments.
- Hawke's Bay high schools with strong arts and performance development programmes to foster young talent as part of their curricula and extra activities.

### Recreation and Sport

Sport and recreation (both active and passive) is an important feature of the lives of Hawke's Bay residents with many people taking advantage of sport facilities and the outdoors. A 2002 Sport Hawke's Bay survey indicated 10% of respondents with an involvement in organised sport, 30% in other active recreation (fishing, gardening, swimming and walking) and the rest in some form of passive recreation (including cultural activities). Updated regional data from the latest SPARC national sports/recreation community participation survey is expected to be made available in February 2009.



Key sports and recreation features of the region include:

- Strong commitment to fostering participation in sport and recreation, particularly by volunteers;
- The Sport Hawke's Bay organisation and the range of sports and recreational organisations around the region;
- Sports venues to national and international standards including Pettigrew Green Arena complex, McLean Park Stadium, Park Island sports complex and the new regional sports facility in Hastings;
- National sports events such as Horse of the Year, test matches (e.g. cricket, rugby and hockey) and age-group sports including athletics, cycling and rowing;
- Major public walkway/cycleway facilities;
- Easy access to a wide range of landscapes suitable for a range of recreational activities.

### **Council Controlled Organisations**

There are no Council controlled organisations as defined by Section 6 of the Local Government Act 2002.

### **Development of Māori Capacity to Contribute to Decision-Making Processes**

The following initiatives are in place to develop Māori capacity to contribute to decision-making processes of Council.

#### **Māori Committee**

Council has had a representative group of Ngati Kahungunu tangata whenua as its Māori Committee since 1991.

The Committee consists of 12 Māori members, 3 from each of the 4 rohe (areas) within Council boundary and 3 Councillors.

It meets on a regular basis (at least 6 times annually), considers various relevant issues and then provides Council with recommendations taking into account the tangata whenua perspective.

#### **Charter**

In 1994 a Charter was developed which set out the way in which the Committee and Council would interact. The Charter was reviewed in 2003 and now includes Council's response to the Treaty of Waitangi and consultation policy with tangata whenua and specifically how tangata whenua are to be involved in Council's decision-making processes.

The main points included in the Charter which build capacity for Māori to contribute in Council's decision-making processes are:

- the Chairman of the Māori Committee sits in Council meetings as a non-voting participating member;
- nominated members of the Māori Committee have been appointed as full voting members on the main Committees of Council;
- a member of the Māori Committee sits on the Hearings Committee of Council;
- a member of the Māori Committee sits on the Regional Transport Committee;
- a regular Kaumatua Hui is held with Councillors and senior staff to listen to their concerns and issues related to the Regional Council role and functions.

#### **Māori Constituencies**

At its meeting on 27 October 2005 Hawke's Bay Regional Council resolved to make no decision and by default allow the provisions contained in section 19ZB to determine whether or not one or more Māori constituencies will be established in the Hawke's Bay region.

Council also resolved to publicly notify the electors rights to demand a poll on this issue.



### Other Initiatives

- As part of the 'Strategic Development' initiatives of Council it is proposed to establish a direct strategic partnership with tangata whenua through the Iwi Authority, Ngati Kahungunu Iwi Inc. This is the early stages of development but is seen as a substantial key proposal that will benefit Council and tangata whenua particularly in terms of involving tangata whenua in the decision-making processes of Council.
- Council continues to develop relationships with various Taiwhenua in the region in an effort to develop capacity at this level and to capitalise on the emerging strength of these entities as a further avenue for meaningful input into decision-making processes of Council;
- Initial work has commenced to develop a template for Hapu Management Plans;
- Council staff meet twice yearly with Ngati Kahungunu executive staff to discuss current issues and from this to identify opportunities for Māori to contribute to decision-making processes.
- Council proposes to work with the Territorial Local Authorities in the region to establish acceptable processes for identifying Waahi tapu thereby improving the opportunities for protection of such sites.

All of the above measures have added to tangata whenua capacity to contribute to Council's decision-making processes. It is considered that these measures are the key components of Council's commitment to the development of Māori involvement in Council's decision-making processes and will continue long term.

Notwithstanding this progress, Council is always willing to discuss other initiatives that may arise over time.

### Information, Legislation and Other Plans Used

#### Information

Information is available from Council on a range of matters relating to projects it has undertaken, meetings held and research it has been involved in:

- Council meetings agendas and minutes;
- Correspondence;
- Technical reports;
- Pamphlets and newsletters;
- Educational material.

If it is necessary to obtain information under the Local Government Official Information and Meetings Act please contact the Administration Manager or Communications Co-ordinator, but note that information is usually readily available without the need for a formal request.

#### Legislative Framework

The functions, duties and powers of the Hawke's Bay Regional Council are primarily contained within the following Acts:

- Biosecurity Act 1993
- Building Act 2004
- Civil Defence Emergency Management Act 2002
- Hawke's Bay Endowment Land Empowering Act 2002
- Land Drainage Act 1908
- Local Electoral Act 2001
- Local Government Act 2002
- Local Government Official Information Meetings Act 1987
- Local Government (Rating) Act 2002
- Maritime Transport Act 1994
- Resource Management Act 1991
- Soil Conservation and Rivers Control Act 1941
- Transit New Zealand Act 1989



## OTHER INFORMATION

Part 6  
10

- Land Transport Management Act 2003, and Land Transport Management Amendment Act 2008
- Transport Services Licensing Act 1989

In addition to legislation, Council also has authority under "The Hawke's Bay Regional Council Bylaw 1990" and "The Hawke's Bay Regional Navigation & Safety Bylaws 2007". Copies of these Bylaws are available at Council offices.

### Plans We Use

The Local Government Act 2002 (the Act) came fully into effect on 1 July 2003. This Act requires Council to produce the following plans and reports:

- A Long Term Council Community Plan (LTCCP) for 2009-19, prepared under Section 93 of the Act. (Adopted June 2006)
- This Annual Plan for 2009/10, prepared under Section 95 of the Act (Included in the LTCCP 2009-19).
- The Annual Report for the financial year ending 30 June 2009 - this will be prepared under Section 98 of the Act.

The reporting will also include 'a summary of information' for both in the Annual Report and the LTCCP.

The Resource Management Act 1991 gives the Hawke's Bay Regional Council the responsibility for promoting the sustainable management of the natural and physical resources of the region. Council has produced a Regional Policy Statement, in line with the requirements of the Act, which establishes a planning framework to balance the demands placed on the natural resources by users.

In addition to the Regional Policy Statement, the Resource Management Act enables Council to develop plans containing rules and regulations by which the management of the natural resources will be carried out.

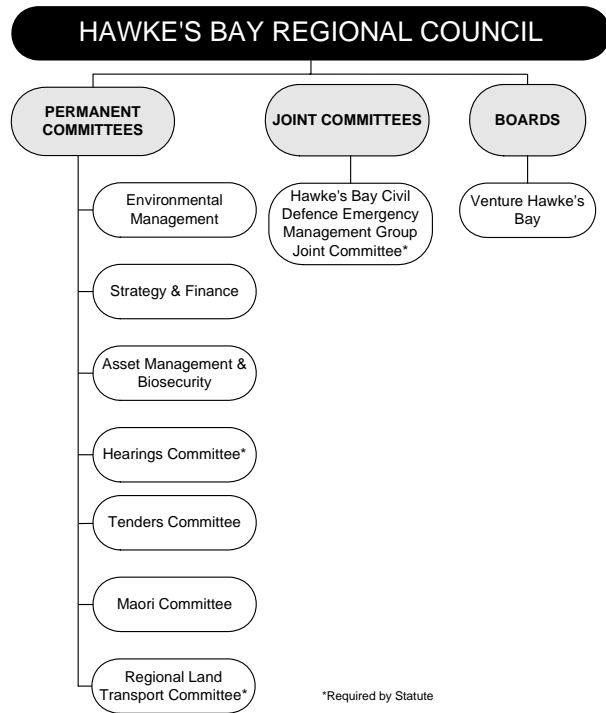
The following resource management plans, prepared by Council have legal status:

- Regional Resource Management Plan (incorporating the Regional Policy Statement) (*operative 28 August 2006*);

- Regional Coastal Plan (*operative June 1999*);
- Proposed Regional Coastal Environment Plan (*publicly notified August 2006*).
- The Resource Management Act also requires Council to monitor the state of the environment, so State of the Environment Update Reports are produced annually. The next full SoE report is due in 2009.
- The Biosecurity Act 1993 allows Council to undertake biosecurity functions provided they have developed a Pest Management Strategy. The Regional Pest Management Strategy has been developed in accordance with the Biosecurity Act 1993 and sets out Council's goals and objectives with regard to its biosecurity functions. The current Regional Pest Management Strategy was adopted by Council in December 2006 and must be reviewed again by December 2011.
- The Regional Land Transport Strategy and the Regional Passenger Transport Plan were approved in October 2002 as a requirement of the Land Transport Amendment Act 1995. A revised Regional Land Transport Strategy and Regional Passenger Transport Plan was adopted by Council in 2008.



## Council & Committee Structure



## Meetings

Regional Council and Committee meetings are open to the public, except where items of business specifically exclude the public. Meeting dates and times are published in Hawke's Bay Today, but are generally scheduled as follows:

- Regional Council generally 4<sup>th</sup> Wednesday each month
- Māori Committee 4<sup>th</sup> Tuesday every 2<sup>nd</sup> month

- Environmental Management generally on the 2<sup>nd</sup> Wednesday of every 2<sup>nd</sup> month
- Asset Management & Biosecurity generally on the 2<sup>nd</sup> Wednesday of every 3<sup>rd</sup> month
- Strategic Planning and Finance generally on the 4<sup>th</sup> Wednesday of every 2<sup>nd</sup> month
- Other Committees as required

## The Regional Council

Council develops or approves all major policy of Council and deals with all other issues concerning Council's responsibilities which have not otherwise been delegated to Committees of Council or the Council's Chief Executive and which are not the responsibility of the Chief Executive but require Council consideration.

**Elected Members:** All Councillors

**Chairman:** Alan Dick

**Deputy Chairman:** Christine Scott

The Chairman of the Māori Committee attends all Council meetings and has speaking rights only.

## Asset Management and Biosecurity Committee

This committee considers and recommends to Council policies with regard to the Council responsibilities or involvement with Land Drainage and River Control under the Local Government Act 2002, Land Drainage and Rivers Control Act 1941 and Land Drainage Act 1908; and Biosecurity under the Local Government Act 2002 and the Biosecurity Act 1993.

**Elected Members:** All Councillors

**Appointed Members:** Marei Apatu, Heitia Hiha

**Chairman:** Councillor Kevin Rose



### Environmental Management Committee

This committee considers and recommends to Council strategies, policies, rules and other methods for inclusion into the Regional Resource Management and Coastal Plans and to ensure effective implementation of plans, processes, research, monitoring and enforcement to satisfy the requirements of the Resource Management Act 1991, National Policy Statements, National Environmental Standards and relevant associated legislation. The committee also considers and approves strategies and implementation of maritime and navigation safety under the Maritime Transport Act 1994.

**Elected Members:** All Councillors

**Appointed Members:** Morry Black, Peter Paku

**Chairman:** Councillor Eileen von Dadelszen

### Strategic Planning and Finance Committee

This committee considers and recommends to Council strategic planning initiatives including development of the Council's Strategic Plan and other strategic initiatives with external stakeholders including District and City Councils.

**Elected Members:** All Councillors

**Appointed Members:** Chairman of the Māori Committee

**Chairman:** Regional Council Chairman Alan Dick

**Deputy Chairman:** Councillor Christine Scott

### Tenders Committee

This committee's role is to:

Consider and accept tenders which exceed the delegated authority of the Chief Executive.

Consider and decide on exemptions to Council's Contracts and Tenders policy as set out in section 2.1.4.2 of Council's policy handbook.

**Elected Members:** Alan Dick (Chairman), Christine Scott (Deputy Chairman), Councillors Kevin Rose and Eileen von Dadelszen

### Māori Committee

The Māori Committee includes both elected Councillors and members appointed by various Māori groups. The committee makes recommendations to Council on matters of relevance affecting Māori people of the region and helps fulfil the Māori consultative undertaking of Council, particularly with regard to the principles of the Treaty of Waitangi (Te Tiriti O Waitangi).

**Three elected members:** Councillors Ewan McGregor, Liz Remmerswaal and Tim Gilbertson and Chairman Alan Dick (ex officio).

**Appointed members:** Mike Mohi (Chairman), Fred McRoberts, Tipu Tareha, Noreen Taylor, Marei Apatu, Haami Hilton, Morry Black, Valetta Wairau, Charlie Lambert, Heitia Hiha, Anthony Tipene, Peter Paku.

### Regional Transport Committee

This committee includes Regional Councillors and appointees from transport interests and other Councils in the region. The aim is to prepare both the Regional Land Transport Strategy and the regional land transport programme for approval by Council, and consider other issues related to Transport which has a regional impact and includes coastal transport.

**Elected Members:** Councillors Alan Dick (Chairman) and Tim Gilbertson

**Appointees from:** Wairoa District Council, Hastings District Council, Napier City Council, Central Hawke's Bay District Council, New Zealand Transport Agency, representatives of the 5 objectives of the New Zealand Transport Strategy, and a cultural representative.



### Hearings Committee

To consider and recommend to Council processes, policies and guidelines to ensure effective management of resource consent and plan development processes.

Pursuant to Section 34(1) of the Resource Management Act (RMA) Hawke's Bay Regional Council delegate the following functions, powers and/or duties under the RMA:

- To hear and make decisions on submissions received on any statutory documents prepared by Council which have been subject to a formal submission process under the Resource Management Act 1991.
- To hear and make decisions on applications arising out of Council's regulatory responsibilities as follows:
  - notified applications where submissions have been made and submitters wish to be heard;
  - reviews of conditions (s.128) where consent holder and/or submitters wish to be heard;
  - notified applications where submissions have been made and where the Committee considers it necessary to hold a hearing;
  - objections to decisions made under delegated authority by staff, where they wish to be heard (S357);
  - where the staff recommendation is to decline any application for reasons other than inadequate information.
- To determine other related discretionary process matters that may be associated with a hearing such as waivers of time, as appropriate under the Resource Management Act 1991.
- To hear and make decisions on objections against costs under Section 36(6) of the Act and objections to the levying of Financial Contributions under Section 108 of the Act.
- To authorise the resolution and settlement of appeals and references through formal hearings or mediation before the Environment Court and to either generally or from time to time delegate to officers the authority to resolve and

settle appeals and references through formal mediation before the Environment Court.

- To hear and make decisions on lapsing of consents under Section 125 of the Act where a decision of an officer acting under delegated authority is subject to an objection.
- To consider and authorise the lodging of an appeal or reference to the Environment Court against a decision of a territorial local authority on an application or designation or proposed plan or plan change or variation to a plan on which the Regional Council had lodged a formal submission.
- Pursuant to section 82 of the Biosecurity Act (BA) the Hawke's Bay Regional Council delegate the following functions, powers and/or duties under the BA:
  - to hear and make decisions on submissions received on any statutory documents prepared by Council which have been subject to a formal submission process under the Biosecurity Act.
  - to authorise the resolution and settlement of appeals and references through formal hearings or mediation before the Environment Court or any other judicial body which relate to the preparation of any statutory documents prepared under the Biosecurity Act by Council and to either generally or from time to time delegate to officers the authority to resolve and settle appeals and references through formal mediation.
- The Hawke's Bay Regional Council delegate to the Hearings Committee Chairman, the appointment of Hearings Committee members to a Hearing Panel to undertake functions set out above and the appointment of the Chair of the Hearing Panel.

**Elected Members:** Councillors Christine Scott (Chairman), Ewan McGregor Eileen von Dadelszen and Liz Remmerswaal

**Appointed Member:** Morry Black or Mike Mohi

### Hawke's Bay Civil Defence Emergency Management Group Joint Committee

The Civil Defence Emergency Management Act 2002 requires all local authorities within a region to form a Civil Defence Emergency Management



## OTHER INFORMATION

Part 6

14

Group as a joint standing Committee under Clause 30(1)(b) of Schedule 7 of the Local Government Act 2002.

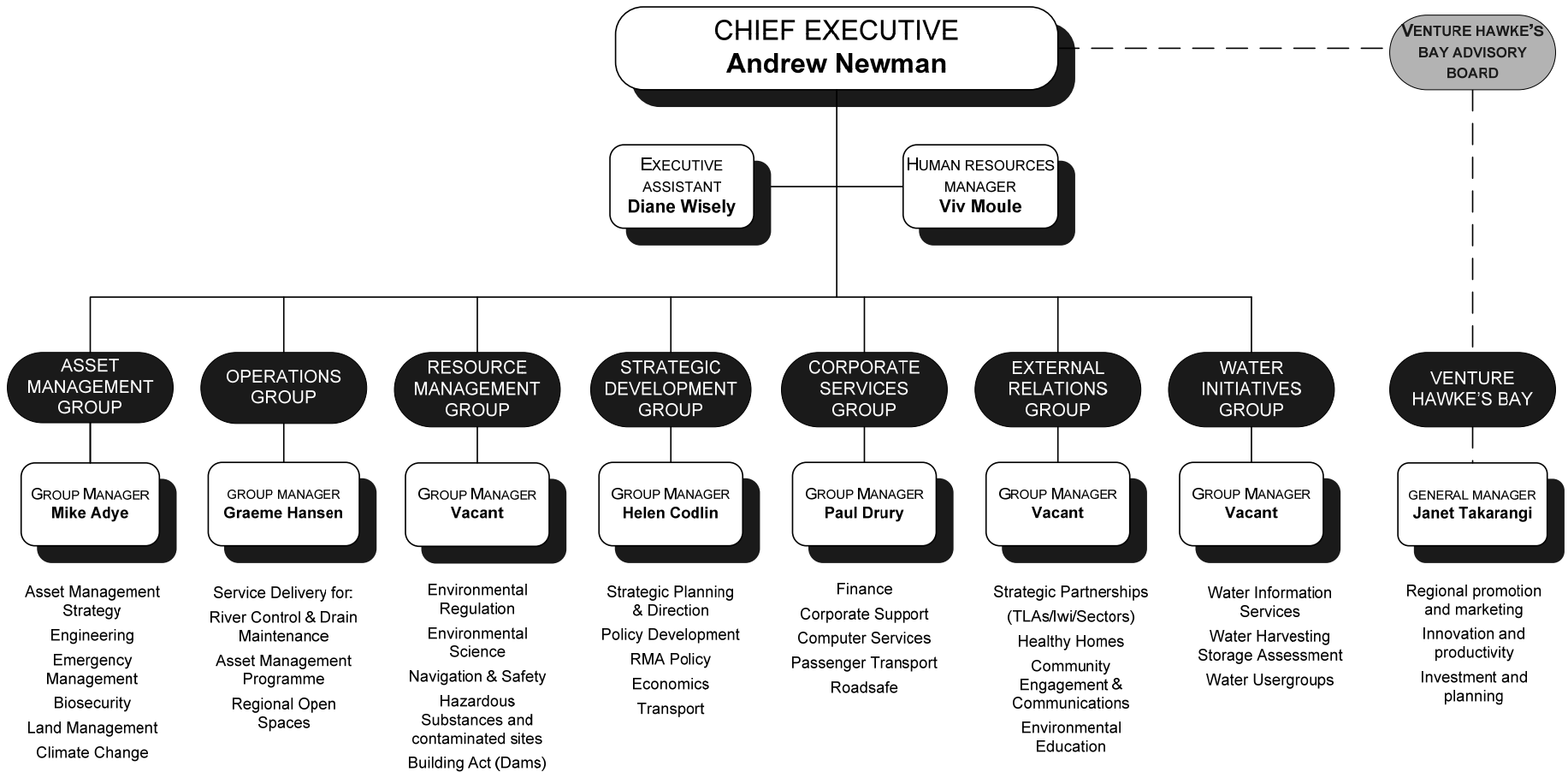
The Joint Committee is composed by including a representative from each local authority that is a member of the Group; representatives must be a chairperson or mayor of that local authority or an elected person from that local authority, who has delegated authority to act for the chairperson or mayor.

**Members:** Chairman Alan Dick – Hawke's Bay Regional Council (Chairman), Barbara Arnott - Mayor Napier City, Lawrence Yule - Mayor Hastings District, Les Probert - Mayor Wairoa District, Trish Giddens - Mayor Central Hawke's Bay District.



**Management Structure**

**EXECUTIVE TEAM**





### Your Regional Councillors



**Alan Dick, QSO, JP, Napier - Chairman**

**Portfolio – Investment Strategy**

Alan represents the Napier constituency, having been elected to Council in 2004. He was Mayor of Napier for 12 years and formerly served the Regional Council in its inaugural years from 1989 to 1992. Alan has a Business Degree and is a Fellow of the New Zealand Institute of Management. He is Chairman of the Hawke's Bay Lotteries Distribution Committee and has broad experience in the business and community sectors.

**3 Newbury Place, Taradale, 06 844 4645, alizdick@xtra.co.nz**



**Christine Scott, Napier - Deputy Chairman**

**Portfolio – Water Futures**

Christine has represented the Napier constituency since 2001. She has a degree in Psychology and post-graduate papers in Education. Previously she was a schools' consultant for a New Zealand educational publishing company. Christine has served on a number of community trusts and chaired the Waiapu Diocesan Finance advisory group. She is currently a director of Anglican Care (Waiapu) Ltd.

**43 Napier Terrace, Napier, 06 835 6950**



**Tim Gilbertson, Central Hawke's Bay**

**Portfolio – Renewable Energy**

Tim Gilbertson has represented the Central Hawke's Bay constituency since 2007. He is a farmer at Patangata and has lived in the area for most of his life. He holds a Bachelor of Arts degree in History and English.

Tim was mayor of Central Hawke's Bay 2001 – 2007, and Councillor 1995 – 2001. He has been a Trustee for ECOED since its formation. Tim has a farming background and is very aware that Council must focus on the long term benefits of the whole region.

**Waitukai Farm, 704 River Road, Patangata, RD2, Otane, 06 857 8975**



## OTHER INFORMATION

Part 6  
17



**Neil Kirton JP, Napier**

**Portfolio – Open Space and Economic Development**

Neil has represented the Napier constituency since 2001. Neil has been a Member of Parliament from 1996 - 1999, serving as Associate Minister of Health and Minister of Customs. He has a post-graduate degree in Science from Otago University. Neil is Chairman of Venture Hawke's Bay, the region's economic development agency and regional tourism organisation.

**113 Fryer Road, Poraiti, Napier, 06 844 8618, [nkirton@xtra.co.nz](mailto:nkirton@xtra.co.nz)**



**Ewan McGregor, Hastings**

**Portfolio – Land Use Change**

Ewan has represented the Hastings constituency since 2004. He has a lifelong experience in farming and forestry, is a member of Hastings Landmarks and Chairman of the Landcare Foundation. Ewan is the recipient of a number of environmental awards and runs an environmental, forestry and rural landscape consultancy. He is active in several organisations and is promoting nationwide projects involving cabbage tree rehabilitation and silvopastoralism with poplars. His primary interests involve water, urban and rural forestry, and landscape.

**102/D Southampton Street, Hastings, 06 873 4288, [ewan-mac@xtra.co.nz](mailto:ewan-mac@xtra.co.nz)**



**Liz Remmerswaal, Hastings**

**Portfolio - Climate Change**

Liz has represented the Hastings constituency since 2007. She is a fifth generation New Zealander who grew up on the family orchard at Longlands and she is a grassroots environmentalist. She trained as a journalist after graduating with a BA from Victoria University and has worked for a number of organisations, including Radio New Zealand, Wellington Community Newspapers, Young Enterprise Scheme and HB Restorative Justice. Liz was a founding member of the Cape Kidnappers Protection Society and Baywatch Environment Group, and as a mother of four children, she is committed to safeguarding the environment for future generations. Liz is a member of the Rotary Pathways group and Karamu Stream care group.

**38 Simla Avenue, Havelock North, 06 877 7596, fax 06 877 1516, [lizrem@clear.net.nz](mailto:lizrem@clear.net.nz)**



## OTHER INFORMATION

Part 6  
18



**Kevin Rose JP, Hastings**

Kevin has represented the Hastings constituency since 1998. Previously an apple grower, he now runs a small horticultural block. He has had experience as a farmer and rural real estate agent. Kevin is involved in many community organisations and the Presbyterian church. He was appointed as a Justice of the Peace in 1997.

**Riverbank Orchard, RD2, Hastings, 06 878 4385 a/h**

**Portfolio – Regional Infrastructure (including biofuels)**



**Eileen von Dadelszen JP, Hastings**

Eileen has represented the Hastings constituency since 1995. She is a graduate of Victoria and Auckland Universities, and is a Member of the New Zealand Planning Institute and the New Zealand Institute of Directors. Eileen is self-employed as a resource management consultant and is involved in governance through appointed or elected membership of a number of national and regional boards and Trusts, as well as through her membership of the Council. Over many years she has been extensively involved in developing networks throughout the Hawke's Bay community, specifically through her active participation in voluntary organisations specialising in communication, conservation, education and the performing arts.

**PO Box 8667, Havelock North, 06 877 8174, evond@xtra.co.nz**

**Portfolio – Regional Futures**



**Fenton Wilson, Wairoa**

Fenton has represented the Wairoa constituency since 2009. Born in Waipukurau and educated in Frasertown, Wairoa and Hastings, Fenton has worked most of his life in the Wairoa district. He farms a 235ha sheep and beef property and is operations manager for a Hawke's Bay-based farm information business. Fenton is chairman of the Wairoa Community Development Trust, serves on the Smedley Station advisory board and as treasurer for the Frasertown Primary School Board of Trustees.

**141 Maromauku Road, RD6, Wairoa 4196, 06-838 7823**

**Portfolio – Northern Hawke's Bay Issues**