



RESOURCE MANAGEMENT GROUP



SAFEGUARDING YOUR ENVIRONMENT + KAITIAKI TUKU IHO



Recreational Use of Hawke's Bay Rivers

Results of the
Recreational Usage
Survey 2010

November 2010
ISSN 1179 8513
EMT 10/22
HBRC plan No. **4209**

Resource Management Group

Environmental Science

Recreational Use of Hawke's Bay Rivers

Results of the Recreational Usage Survey 2010

Prepared by:
Anna Madarasz-Smith
Senior Scientist – Coastal Quality



.....
Signature:

Reviewed by:
Adam Uytendaal
Principal Scientist – Water Quality and Ecology



.....
Signature:

Approved:
Darryl Lew, Group Manager – Resource Management



.....
Signature:

November 2010
ISSN 1179 8513
EMT 10/22
HBRC plan No. 4209

EXECUTIVE SUMMARY

Between January and March 2010, residents of Hawke's Bay were asked to complete an on-line or hard-copy survey (included in their regional newspaper), listing the recreational sites they used, and several aspects associated with the values of these sites.

The responses were to inform Hawke's Bay Regional Council about sites that may not have been highlighted as high value recreational areas through other means.

The survey found that:

- The Mohaka River received the most responses for Hawke's Bay's favourite river.
- Tukituki and Clive Rivers came second and third respectively;
- Most respondents visited Hawke's Bays river between monthly and 6-monthly, however a significant proportion (27%) visited daily to weekly.
- The top attributes that made sites appealing included:
 - Access;
 - Water Quality;
 - Setting; and
 - Proximity to home.
- The top attributes that made sites unappealing included:
 - Water Quality (low); and
 - Rubbish.
- The majority of river systems support a variety of activities.
- The majority of respondents were satisfied with the level of water quality information provided to the public.

TABLE OF CONTENTS

- 1.0 INTRODUCTION**.....1
- 1.1 Background.....1
- 2.0 METHODS**1
- 3.0 RESULTS**.....2
- 3.1 First Choice River System3
- 3.2 Visitor Frequency4
- 3.3 Site Attributes.....4
- 3.3.1Positive.....4
- 3.3.2Negative5
- 3.4 Regional Activities6
- 3.5 Water Quality Information7
- 4.0 CONCLUSIONS**7
- 5.0 REFERENCES**8
- Appendix One – On-line survey9
- Appendix Two – Hardcopy survey10
- Appendix Three - Specific comments.....11

1.0 INTRODUCTION

1.1 Background

Hawke's Bays coastal waters, rivers and lagoons are extensively used for a range of recreational activities. Throughout the summer months Hawke's Bay rivers and beaches become a popular spot for swimming, kayaking, fishing, and paddling. Over winter, kayaking, dog and nature walks make these areas a year round recreational resource.

The suitability of these areas for contact recreation (when part of the body comes into contact with the water) can however be compromised by the contamination of water by human and animal faecal material which may carry harmful pathogens and viruses that can cause illness.

Hawke's Bay Regional Council acknowledges recreational values associated with waterways and beaches by defining areas in the proposed Regional Coastal Environment Plan ((pRCEP), HBRC, 2008) that can be managed for Contact Recreational purposes (class CR in the pRCEP). A selection of these areas, as well as several freshwater rivers and lakes are monitored as part of the Recreational Water Quality Monitoring Programme to determine whether sites are suitable for contact recreation. Results are compared to guidelines developed by the Ministry of Health and Ministry for the Environment (2003), and Council works in partnership with the Territorial Local Authorities (TLA's) and Public Health Unit (PHU) to communicate these results to the public.

During the submissions and hearings process on the proposed Regional Coastal Environment Plan (over 2006/07-2007/08 period), it became apparent there was some interest to see CR designation extended to additional areas of the Hawke's Bay coastline. Some submitters also requested that this classification be extended into freshwater reaches in the Hawke's Bay Regional Resource Management Plan (RRMP, 2006).

In order to justify extending or adding any new sites to the CR designation, and in order to assist in assessing the values of Hawke's Bay areas as recreational resources, it was identified that further information on the areas used for recreational purposes was needed.

In 2008 a pilot project was scheduled for the 2009/2010 summer period. The aim of this study was to survey Hawke's Bay residents on their use of freshwater rivers for recreational purposes.

The following report details the results of this pilot study.

2.0 METHODS

Traditional methods of assessing recreational use of areas typically rely on face to face interviews with the public. However this method tends to bias in favour of well known areas as researchers consciously select popular sites to conduct interviews. For the purposes of this survey it was decided that given the level of resources available, and desire for a completely blank approach (e.g. not biasing the results based on predetermined site selection), an on-line survey with complementary hard-copy survey form was the most appropriate option.

Additionally, face to face survey responses may be biased by the experiences of the individual on the particular survey day, and the effect of weather conditions on number of people present at a particular site on a particular day.

The on-line survey was created as a cost-effective means of surveying as many people as possible about their general recreational habits as opposed to specific information about their experiences on any given day. The on-line survey was open from January 2010 until March 2010. Hard-copy forms were published in the February 2010 issue of the Big Picture, and in

the community papers; the Napier Mail, Napier Courier, and Hastings Leader (appendix one and two).

Several publications were reviewed to assist in developing the questions used for the current survey (HBCB & RWB, 1986; Tourism Resource Consultants, 1998; Galloway, 2008).

3.0 RESULTS

A total of 102 responses were achieved from both the on-line and hard-copy survey forms. This response rate is similar to other regional recreation surveys (e.g. Tourism Resource Consultants, 1998; Hawke's Bay Catchment Board and Regional Water Board, 1986).

Responses were collated according to river and access point (figure 2.1).

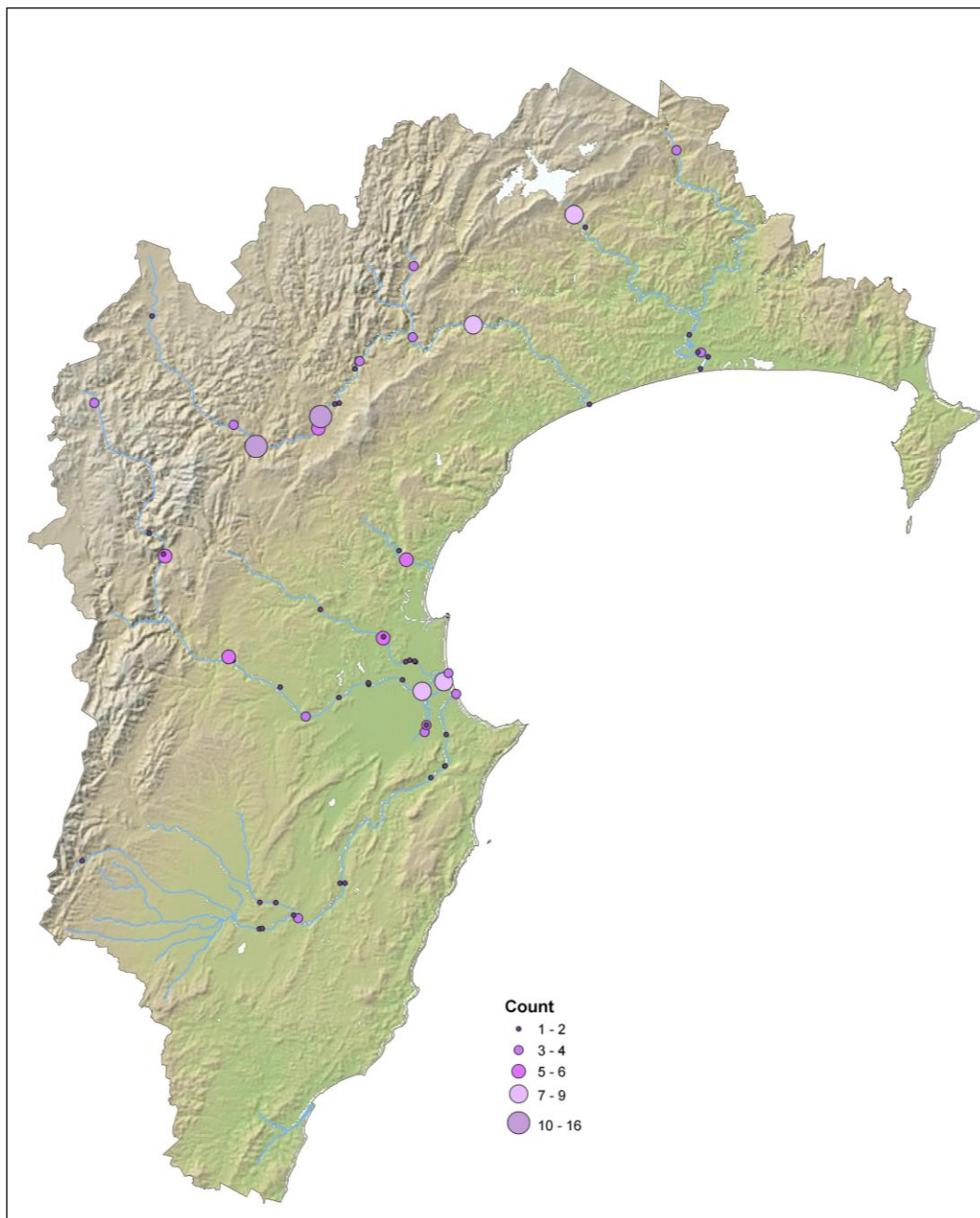


Figure 2.1: Recreational sites identified by respondents in the Recreational Usage Survey. Size of bubble indicates how many responses were received at that particular site.

3.1 First choice river system

Respondants of the survey were asked to name their favourite river in Hawke’s Bay, and to provide some comment on the attributes that made this river appealing.

With a large majority, the Mohaka River rated as the regions favourite river system with 33% of the vote (figure 3.1). This river was used mostly for kayaking, and access was identified at a number of sites along the river.

Both the Tukituki and Clive Rivers came in second with 11%, closely followed by the Tutaekuri at 10%.

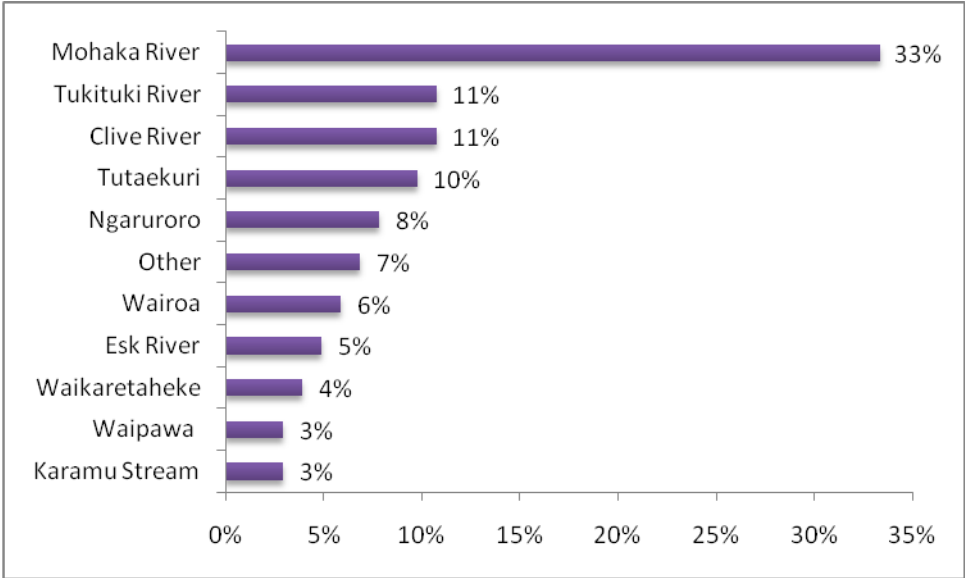


Figure 3.1 Hawke’s Bay’s favourite rivers by order of preference.

For those respondents who rated the Mohaka as their favourite river, second and third place respectively went to the Ngaruroro (14) and Tukituki Rivers (7). For those respondents who rated Tukituki as their favourite, second place equal went to the Tutaekuri and Ngaruroro (2) rivers, and for those respondents who rated Clive as their favourite, second place went to the Esk River (3) and third place equal went to Wairoa and Ngaruroro Rivers (2) (figure 3.2).

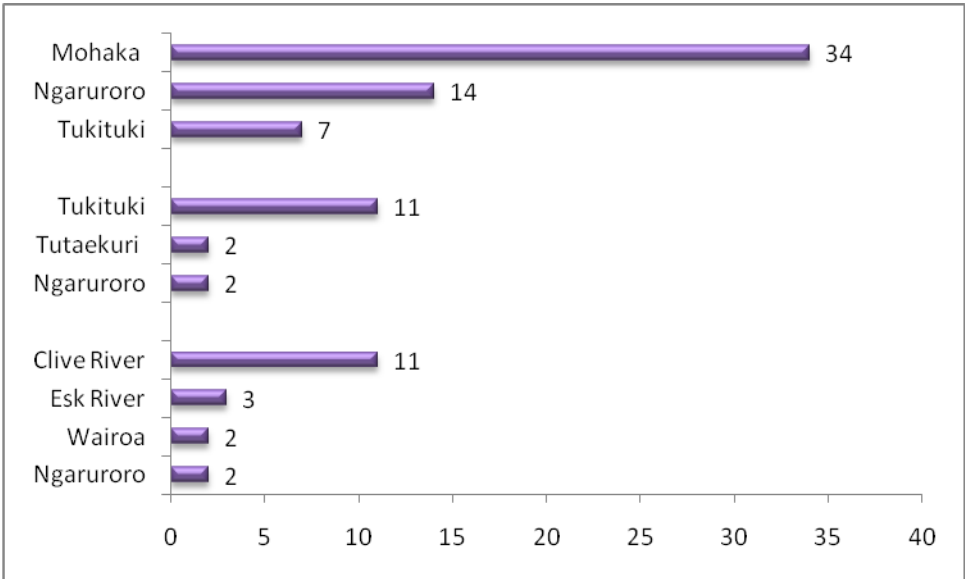


Figure 3.2 Second and third place river votes based on initial response.

3.2 Visitor Frequency

In order to gauge the level of interaction that respondents had with the river they had selected as their first choice, respondents were asked how frequently they visited this river (figure 3.3). Most respondents visited between monthly and 6-monthly, however a large number of respondents also visited more frequently, with 27% visiting daily or weekly.

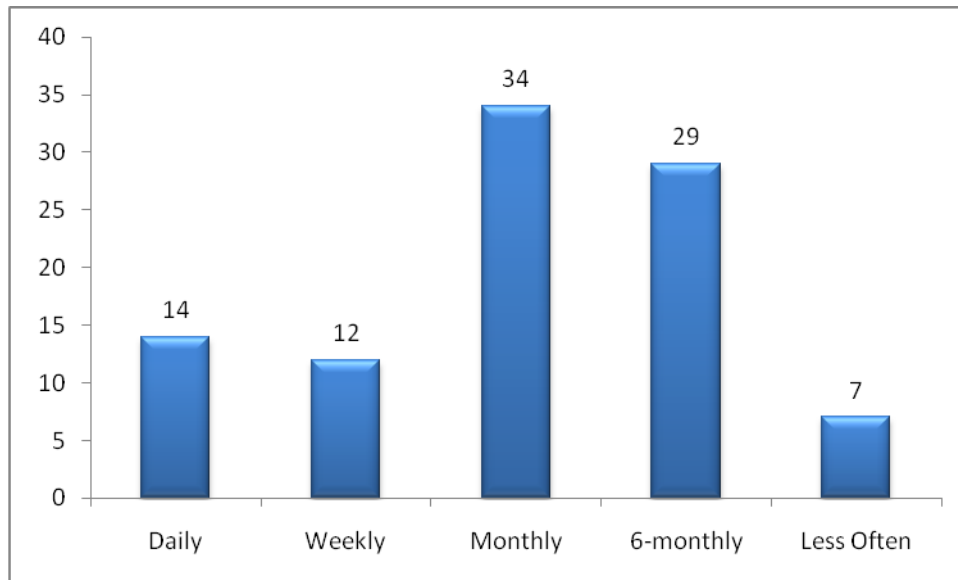


Figure 3.3 Frequency of visits to respondents favourite river.

3.3 Site Attributes

3.3.1 Positive

Respondents were asked about the particular site attributes that made their favourite river appealing. Not surprisingly access rated the highest, with water quality, setting, and proximity to home following closely. Few respondents noted the presence of shade or facilities as being a particular draw card to a certain site.

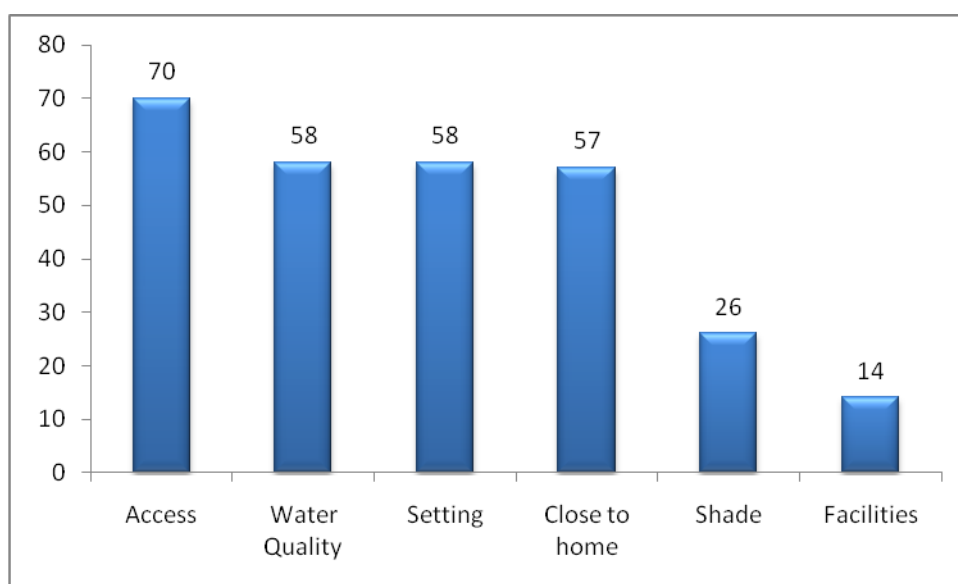


Figure 3.4 Attributes that made sites appealing

3.3.2 Negative

Respondents were then asked about the particular site attributes that made sites unappealing, and for general comments regarding recreational rivers in Hawke's Bay. The majority of respondents noted water quality and rubbish as the major issues that made sites unappealing. Other areas of concern related to access, damming or diversion, water abstraction, weeds and pests, crowds, jet boaters and four-wheel drivers, lack of facilities, beach raking/gravel extraction and security (figure 3.5).

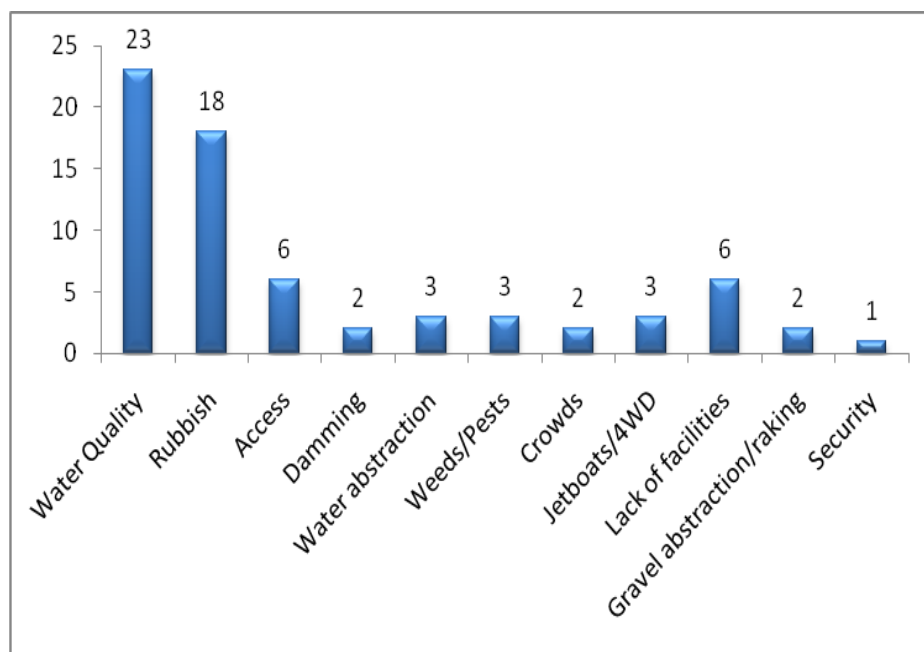
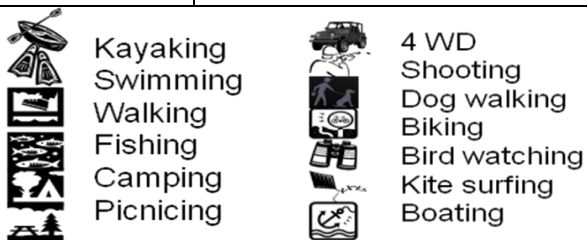


Figure 3.5 Attributes that made sites unappealing

3.4 Regional Activities

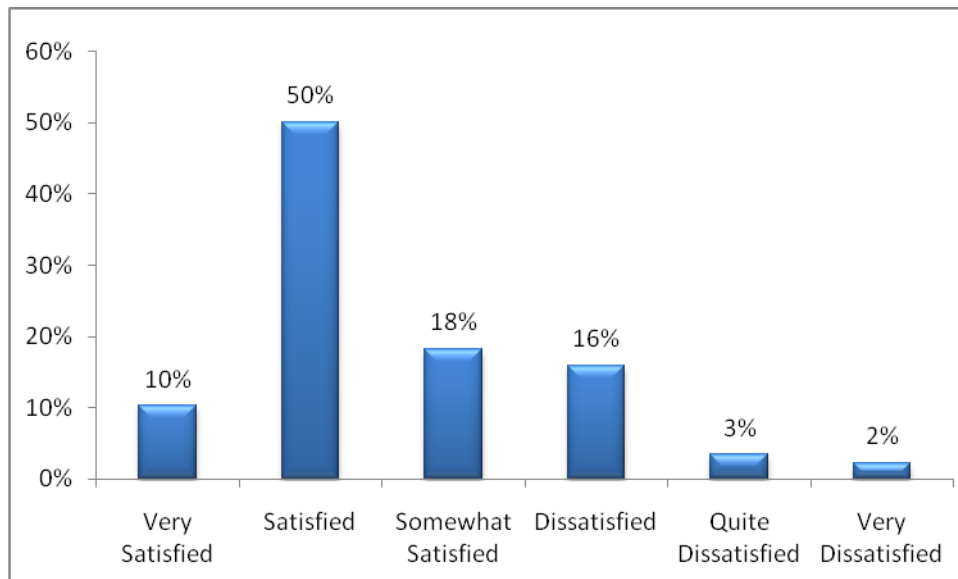
Respondants of the survey were also asked about the type of activities that they undertook at the different sites identified. The following activities were identified from these responses. Overall most rivers supported a variety of recreational activities (see below).

RIVER	ACTIVITIES
MOHAKA RIVER	
CLIVE RIVER	
TUKITUKI RIVER	
TUTAEKURI	
NGARURORO	
WAIROA	
ESK RIVER	
WAIKARETAH EKE	
KARAMU STREAM	
WAIPAWA	



3.5 Water Quality Information

The final question asked of the respondents was how satisfied they were about the level of public information about water quality in recreational areas. The aim of this question was to try and identify further areas for increasing public awareness about Councils Recreational Water Quality Monitoring Programme. Overall the majority (60%) of respondents appeared Very Satisfied to Satisfied, with only a few responses (5%) in the Quite to Very Dissatisfied. A review of the comments for those responding in the negative, showed that the level of satisfaction for these responses was more aligned to the water quality of a specific area than information regarding the level of public information. Additional specific comments are included in appendix three.



4.0 CONCLUSIONS

- The Mohaka River received the most responses for Hawke's Bay's favourite river.
- Tukituki and Clive Rivers came second and third respectively;
- Most respondents visited Hawke's Bays river between monthly and 6-monthly, however a significant proportion (27%) visited daily to weekly.
- The top attributes that made sites appealing included:
 - Access;
 - Water Quality;
 - Setting; and
 - Proximity to home.
- The top attributes that made sites unappealing included:
 - Water Quality (low); and
 - Rubbish.
- The majority of river systems support a variety of activities.
- The majority of respondents were satisfied with the level of water quality information provided to the public.

The responses obtained during this survey may be used to further identify recreational values associated with Hawke's Bay river sites.

5.0 REFERENCES

Galloway, S.P. (2008) New Zealand Recreational River Use Study: Specialization, Motivation and Site Preference. Dunedin, New Zealand. School of Physical Education, University of Otago.

Hawke's Bay Catchment Board and Regional Water Board (1986). Coastal Recreation Survey. Hawke's Bay Beaches: Summer 1985/1986.

Hawke's Bay Regional Council (2006). Hawke's Bay Regional Resource Management Plan. ISBN 1-877405-11-6. HBRC Plan Number 3881.

Hawke's Bay Regional Council (2008). Proposed Regional Coastal Environment Plan. ISBN 1-877405-23-X. HBRC Plan Number 4071.

Ministry for the Environment & Ministry of Health (2003). Microbiological Water Quality Guidelines for Marine and Freshwater Recreational Areas. MoH & MfE, Wellington.

Tourism Resource Consultants, 1998. Lake Waikaremoana Recreation Study 1997/1998. Prepared for Electricity Corporation of New Zealand Limited.

APPENDIX ONE – ON-LINE SURVEY

SAFEGUARDING YOUR ENVIRONMENT • KAITIAKI TUHU IHO
Feedback Contact Sitemap

Home Who We Are What We Do Read About It Get Into It
Web Site Search

Associated pages... Bay's Best River Survey

[Air](#)
[Climate](#)
[Coastal](#)
[Consents](#)
[Land](#)
[Passenger Transport](#)
[Pests](#)
[Pollution Complaints](#)
[Rates](#)
[Strategic Development](#)
[Waste](#)
[Water](#)
[B 4 U Swim](#)
[Freshwater and Estuarine Gradings](#)
[Bay's Best River Survey](#)
[Marine Gradings](#)
[Water Quality Monthly Report](#)
[Flood Protection](#)
[Groundwater Level Areas](#)
[Groundwater Quality](#)
[Irrigation](#)
[Low Flows](#)
[Rainfall](#)
[River Flows](#)
[River Levels](#)
[Targeted Investigations: Water](#)
[Use Bans](#)
[Water Charges](#)
[Well Information](#)
[Waterways](#)
[Water Metering Information](#)

We're asking the people of Hawke's Bay about your favourite river places. Where do you like to go and why?

Have your say until 31 March. We'll then tell you which of the Bay's rivers you voted as the BEST, plus put you in the draw for a \$200 grocery voucher.

GENERAL

Q.1 Which rivers do you visit?

* 1st Choice *

* 2nd Choice *

* 3rd Choice *

Q.2 How often do you visit these rivers?

1st choice? Daily Weekly Monthly Six Monthly Less Often

2nd choice? Daily Weekly Monthly Six Monthly Less Often

3rd choice? Daily Weekly Monthly Six Monthly Less Often

Q.3 Which road or access points do you use?

Q.4 If you ticked "Other" in Q.1 which other rivers do you visit?

Q.5 What do you do there?

<input type="checkbox"/> 4WD	<input type="checkbox"/> Fish	<input type="checkbox"/> Nature walk	<input type="checkbox"/> Running	<input type="checkbox"/> Trail bike
<input type="checkbox"/> Bird watch	<input type="checkbox"/> Jet boat	<input type="checkbox"/> Paddle	<input type="checkbox"/> Shoot	<input type="checkbox"/> Whitebait
<input type="checkbox"/> Cycle	<input type="checkbox"/> Kayak	<input type="checkbox"/> Picnic	<input type="checkbox"/> Swim	<input type="checkbox"/> Other?
<input type="checkbox"/> Dog walk	<input type="checkbox"/> Kite surf			

Q.6 If you ticked "Other" in Q.5 what else do you do there?

Q.7 What do you like about it?

<input type="checkbox"/> Access	<input type="checkbox"/> Close to home
<input type="checkbox"/> Facilities	<input type="checkbox"/> Water Quality
<input type="checkbox"/> Setting	<input type="checkbox"/> Shade

Q.8 Is there anything you don't like about these places?

SPECIFIC

Q.9 Which is your favourite?

Q.10 How often do you visit this river?

Daily Weekly Monthly Six Monthly Less Often

Q.11 What do you like about this river?

<input type="checkbox"/> Access	<input type="checkbox"/> Close to home
<input type="checkbox"/> Facilities	<input type="checkbox"/> Setting
<input type="checkbox"/> Shade	<input type="checkbox"/> Water Quality

Q.12 How satisfied are you with the public information about water quality in recreational areas?

Very Satisfied
 Somewhat Satisfied
 Satisfied
 Dissatisfied
 Quite Dissatisfied
 Very Dissatisfied

Q.13 Do you have any other comments?

Name

Telephone Number

Copyright © - Hawke's Bay Regional Council, 159 Dalton Street, Private Bag 6006, Napier 4110, New Zealand. Ph: (06) 935-9200, Fax: (06) 935-3601
Comments/Feedback to the [Webmaster](#)

WHAT'S YOUR FAVOURITE HAWKE'S BAY RIVER?

Tell us **online** @ www.hbrc.govt.nz or send your answers to:
 Hawke's Bay Regional Council, Private Bag, 6006, Napier 4142 by 31 March.
 All surveys go into the draw for a **\$200 grocery voucher**.

HAWKE'S BAY
REGIONAL COUNCIL

■ What is your favourite river and why do you like it? _____

■ Which rivers do you visit?

	Tick all that apply	Daily	Weekly	Monthly	6 Monthly	Road or access point
Clive river	<input type="radio"/>	<input type="radio"/>	<input type="radio"/>	<input type="radio"/>	<input type="radio"/>	
Esk river	<input checked="" type="radio"/>	<input type="radio"/>	<input type="radio"/>	<input type="radio"/>	<input type="radio"/>	
Karamu stream	<input type="radio"/>	<input type="radio"/>	<input type="radio"/>	<input type="radio"/>	<input type="radio"/>	
Mohaka River	<input checked="" type="radio"/>	<input type="radio"/>	<input type="radio"/>	<input type="radio"/>	<input type="radio"/>	
Ngaruroro river	<input type="radio"/>	<input type="radio"/>	<input type="radio"/>	<input type="radio"/>	<input type="radio"/>	
Porangahau river	<input checked="" type="radio"/>	<input type="radio"/>	<input type="radio"/>	<input type="radio"/>	<input type="radio"/>	
Taharua river	<input type="radio"/>	<input type="radio"/>	<input type="radio"/>	<input type="radio"/>	<input type="radio"/>	
Tukituki river	<input checked="" type="radio"/>	<input type="radio"/>	<input type="radio"/>	<input type="radio"/>	<input type="radio"/>	
Waikaretaheke river	<input type="radio"/>	<input type="radio"/>	<input type="radio"/>	<input type="radio"/>	<input type="radio"/>	
Waipawa river	<input checked="" type="radio"/>	<input type="radio"/>	<input type="radio"/>	<input type="radio"/>	<input type="radio"/>	
Wairoa river	<input type="radio"/>	<input type="radio"/>	<input type="radio"/>	<input type="radio"/>	<input type="radio"/>	
Other	<input checked="" type="radio"/>	<input type="radio"/>	<input type="radio"/>	<input type="radio"/>	<input type="radio"/>	

■ What do you do there?

Swim/paddle	<input type="radio"/>	Trail bike	<input type="radio"/>	Picnic	<input type="radio"/>
Kayak	<input type="radio"/>	Cycle	<input type="radio"/>	Nature walk	<input type="radio"/>
Fish	<input type="radio"/>	4WD	<input type="radio"/>	Bird watch	<input type="radio"/>
Whitebait	<input type="radio"/>	Jet boat	<input type="radio"/>	Other	_____
Kite Surf	<input type="radio"/>	Shoot	<input type="radio"/>		_____
Dog walk	<input type="radio"/>				

■ What do you like about it?
 Access Quality Shade Facilities Close to home Setting Other _____

■ Anything you don't like about it? _____

■ How satisfied are you with information about the water quality in our river areas?
 Very Sat. Somewhat sat. Satisfied Dissatisfied Quite dissat. Very dissat.

■ Do you have any other comments? _____

Name _____ Contact No. _____

APPENDIX THREE – SPECIFIC COMMENTS (unaltered)

Some great kayaking in the area - the things I like about them include the quality of the rapids and the remote feel of the grade 4 section of the Mohaka and Ruakituri.
I find the question " What do I like about this river" does not give me any of the options I go there for. Natural Environment, challenge, peace, good reliable flow, beauty of a distinctive/and unique natural environment. A powerfully peaceful environment. I would be there a lot more,(like I was in the past) if child rearing and distance did not make it difficult at present. I expect to return there in the future more frequently and expect that many more will grow as contributing individuals to society through spending time in this the environment of the Mohaka River. The Mohaka offers a 4 -5 distinctive areas for kayakers from beginners and family trips to the a significant grade 4 challenge. I have enjoyed all of these several times and will continue to do so. (If the irrigators and diary industry let us).
Start prosecuting people dumping rubbish in our lovely country
Clean up the tukituki, I have been fishing for 55 year and will not eat fish out of it.
The new rotary cycle walkways are great
Great place for recreation, Esk, Tranquil, ideal for fishing and swimming
Streams like Alexander park and georges drive - water quality and planting needs improving similar to chrischurch. Public reserves like Esk Reserve are very important providing access to recreation areas increasingly preseve , wealthy.
Congradulations on doing the survey. However, I have significant reservations on the use of any data generated from the survey for decision making, given: 1: the nature of the questions, 2: how the survey has been delivered.
Hawkes Bay desperately needs somewhere decent to waterski. I have a number of friends with young families and we would love to able to stay in hawkes bay and teach our kids to ski. It is such a healthy and family focussed recreation and it is totally uncatered for in hawkes bay.
I hope you can get the Mohaka and Tukituki back to the pristine level they once had.
Over the last year or two the water quality appears to have deteriorated. Possibly to do with the dairy farming going on in the Mohaka tributary, the Taharua? Especially concerning given it is so high up the river.
The facilities and consideration given to the local rivers by the council is wonderful. I wish I could say the same about some of the pulbic that use them.
Waitangi Day Low Tide and what happens could not move wakai sad.
Wont visit the Tutikuri can't stand all the sewage in it
do you have future plans to replant species of trees on stop banks to encourage more bird life and to enhance the beauty of river system . systems need to be in place to monitor the quality of water daily from all of our major rivers to further understand , and educate ourselves on this environmental problem.divert part of a river to create a recreational lake .hold family water safety days . there is massive amounts of scope .
Since the landslide it is hard to get down to the beach on the Wairoa side of the river
Dont often see much information about water quality. However water quality appears to be good for kayaking and river walks.
stop irrigation takes and run off from dairy farms. stockade farm prime example.
I don't like the thought of losing these natural rivers to dams or irrigation! [Or of deteriorating water quality from farm run-off.] Except the Waikaretaheke, which is already dammed, so I don't want to lose scheduled releases there (and ongoing clearing of logs in that river is important, as managed by local kayakers). The Mohaka is particularly precious because it is one of the few big whitewater rivers in the lower North island that is always paddleable when other rivers are low in summer. And it has the whole range of kayaking through grades 1, 2, 3 and 4. I have been visiting the Mohaka for nearly 30 years. The upper regions of the Mohaka and Ngaruroro are rare in the North Island in offering multi-day navigable wilderness trips for kayakers (a bit like the Motu in the Bay of Plenty).
Forestry rubbish and farmers animals in rivers are not polices.
At certain times the water smells awful. I wish I knew what the water quality is by tests,
Far more could be done protect and improve the river quality,public access on some could be improved
I think the water quality of the Tukituki river (and i am no expert and have not tested the water) is terrible, I have fished there twice earlier in the season and could not believe the smell or how quick it had became slimy and weedy after a good flush. It surprises me that a river in Hawkes Bay could

become this way so quickly.
The Tukituki is an unpleasant river that needs cleaning up. The Mohaka is a pristine river that offers so many different things to many people. It should be protected from pollution and damming. Clean up the gorse on Poronui to stop it spreading down the Repia and further into the Mohaka than it already has.
It is wonderful to have walkways which we enjoy. Great to councils effort! I still believe our river water is being "Plundered"
What else are the results of this survey going to be used for?
Beautiful natural environment that should be maintained in it's existing state for future generations.
As i do white water kayaking, the nature of the rapids on the river is most important. These are often not considered in Damming and diversion proposals.
I use to use to rivers a couple of times a week but now have old dog and children have grown up we rarely visit.
Our Hawke's Bay asset!
Would it be possible to ban 4WD access to some river bed areas, especially those offering back country fishing opportunities? These guys make a real mess and don't do the riverbeds any good when they drive through them.
Tukituki water quality very poor
Would like to see a native tree planting programme between river and stopbank.
I believe that the balance between looking after the water quality and dairy farming is heavily tilted towards farming. Not enough thought gone into long term affects prior to resource consents for dairying. Pollution on Tuki Tuki is absolutely shameful as is the water take for irrigation Time we all woke up & stop making feeble excuses before we simply destroy our resources beyond repair. Wont be long before we join the great polluted waters of the world unless we get real.
Council's newsletter is very informative. Ver heartened by the council's efforts with ecological issues.
Rivers are a resource for all, present & future generations. If rivers are adjusted, ie: dams, water draw off/irrigation they are changed forever. Rivers over time have made fertile grounds/lands for agriculture/horticulture/Viviculture, we need to thik long term. not for immediate gains. Rivers are the life blood od the earth, they need to be nutured, with thought of future generations.
Get the motor bikes and cars off the stop bank and make this a safe and peaceful area for family recreation.
Councils should do more re rubbish piles and dumping and dumpfees too high
i can understand the need for flood control ,but "beach raking" is doing more harm than good. i have some concerns over the amount of shingle/gravel that is being extracted for various road works, is this being monitored at all does it affect our fish,fauna and flora ?
Monitor and inforce by-laws to insure the water quality of the rivers. Require those who have properties boardinn the river to observe the regulations which I believe are all ready in place.
We live a Nukaka and our waterways are neglected, have paid rates and recieved nothing in return in our area.
We are so lucky to have so many lovely waterways with tracks for walking our dogs. Doing this survey reminds me of that and I'm determined to visit them more often.
Council does good job in advising non-swim areas via media.
Keep up the good work. Hope water quality will improve in the rivers closer to town. Eg Waipatiki lagoon, lake Tutira, Ngaruroro, Tutaekuri, Mohaka
Our WAiroa river runs through the township, has a lighthouse (that works at night) Simply the Best of the Best
Have lived here beside the river for years, would not want to leave here
The wairoa river is always lovely with the changing scenery (seasonly)
This survey is too simplistic. I can only hope it is never used seriously to decide whether or not a river will be dammed or not. I am after whitewater. Not everything can be placed in a box!!
Our rivers cannot be given a value based on what humans can take from them or how often humans use them for pleasure. These rivers have lived far longer than humans and are the driving force behind NZ wildlife and landscape. We have no right to determine a rivers value based merely on how many picnics are had beside it.