

# ROCKET LAUNCH FROM MAHIA PENINSULA, HAWKES BAY, NEW ZEALAND

Rocket Lab will be launching a rocket into space from Mahia, Hawkes Bay. The rocket will fly East South East (115°) from the tip of Mahia Peninsula (39°15' S, 177°52' E). The area beneath the rocket's flight path near the launch point must be clear at the time of launch. The launch time cannot be exactly predicted ahead of time. The launch may be:

- **Any day from Friday 16th August to Friday 30th August, 2019**

The daily launch window will be approximately 1 hour 40 minutes, and will occur approximately 26 minutes earlier each day of attempted launch.

Rocket Lab broadcasts up-to-date launch information on **Marine VHF Channel 19**

Vessels planning to cross the area below are requested to contact Rocket Lab Range Control on **Marine VHF Channel 07** or **Channel 16** at the earliest opportunity.

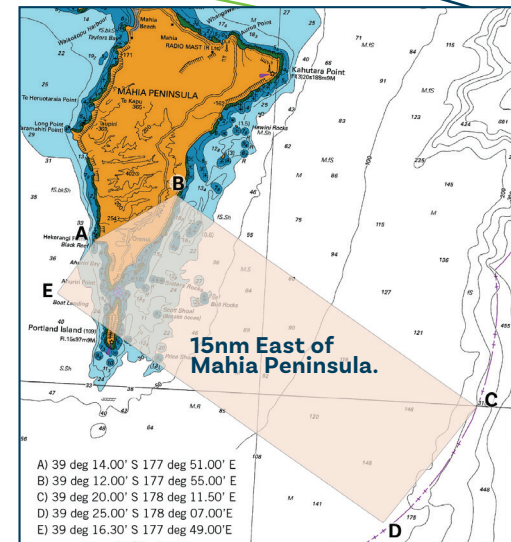
Range Control may request a slight speed or course change to assist in clearing the area before the actual launch time.

## MARINE SAFETY ZONE ACTIVATION AND DE-ACTIVATION TIMES MAY OCCUR EACH DAY AS FOLLOWS:

Hazard Area active No earlier than   NZST		Hazard Area de-activated No later than   NZST	
16-Aug-2019	22:57:00	17-Aug-2019	03:07:00
17-Aug-2019	22:32:00	18-Aug-2019	02:41:00
18-Aug-2019	22:06:00	19-Aug-2019	02:15:00
19-Aug-2019	21:40:00	20-Aug-2019	01:50:00
20-Aug-2019	21:15:00	21-Aug-2019	01:24:00
21-Aug-2019	20:49:00	22-Aug-2019	00:58:00
22-Aug-2019	20:23:00	23-Aug-2019	00:32:00
23-Aug-2019	19:58:00	24-Aug-2019	00:07:00
24-Aug-2019	19:32:00	24-Aug-2019	23:41:00
25-Aug-2019	19:06:00	25-Aug-2019	23:15:00
26-Aug-2019	18:40:00	26-Aug-2019	22:50:00
27-Aug-2019	18:15:00	27-Aug-2019	22:24:00
28-Aug-2019	17:49:00	28-Aug-2019	21:58:00
29-Aug-2019	17:23:00	29-Aug-2019	21:33:00
30-Aug-2019	16:58:00	30-Aug-2019	21:07:00

The area extends approximately **15nm East of Mahia Peninsula**. The boundary points are:

- A) 39 deg 14.00' S 177 deg 51.00' E
- B) 39 deg 12.00' S 177 deg 55.00' E
- C) 39 deg 20.00' S 178 deg 11.50' E
- D) 39 deg 25.00' S 178 deg 07.00' E
- E) 39 deg 16.30' S 177 deg 49.00' E



See Notice to Mariners Ed. 16 and the Rocket Lab website ([www.rocketlab.co.nz](http://www.rocketlab.co.nz)) for details or scan the QR code below.



[hbrc.govt.nz](http://hbrc.govt.nz)

**HAWKES BAY**  
REGIONAL COUNCIL

TE KAUNIHERA A-ROHE O TE MATAU-A-MĀUI