

LEGEND

- PROPOSED ROAD CENTRELINE
- CONTOUR MAJOR
- CONTOUR MINOR
- EX. BOUNDARY
- EX. KIMBIRAL PARCELS
- EX. CHORUS
- EX. POWERCO GAS
- EXISTING WETLANDS (TO REMAIN UNDAUNAGED DURING WORKS)

Scale: 1:500
Scale bar: 0, 5, 10, 20m

NOTES

- REFER TO REMEDIAL WORKS SPECIFICATION DOCUMENT A0006-PL-00-1000-0000-BR-DG-TREC-000001.
- REFER TO GENERAL NOTES AND SPECIFICATIONS ON DRAWING SHEETS G000.0002 AND G0-000003.
- AERIAL DRONE FLOWN ON THE 15TH APRIL 2025.
- EXISTING WETLANDS TO REMAIN UNDAUNAGED DURING WORKS.

INDICATIVE VOLUMES NOTES

1. INDICATED VOLUMES (SOLID VOLUMES) ARE BASED ON THE PROPOSED DESIGN SURFACE AND LIDAR OF APRIL 2025.

- VOLUME OF CUT TO DESIGN LEVELS:
 - A) TO RL 1.2m = 17,500m³
 - B) FOR RIPRAP = 2,200m³
- VOLUME OF ROCK RIPRAP:
 - A) AROUND PIERS = 1,700m³
 - B) EMBANKMENT WRAPPING = 930m³

CUT TABLE	
COLOUR	DEPTH FROM (PI) TO (PI)
Light Blue	0.0 - 0.5
Light Green	0.5 - 1.0
Light Yellow	1.0 - 1.5
Yellow	1.5 - 2.0
Orange	2.0 - 2.5
Dark Orange	2.5 - 3.0
Red-Orange	3.0 - 3.5
Red	3.5 - 4.0

Transport Rebuild East Coast | **KiwiRail**

PROJECT: Transport Rebuild East Coast | REVISION DETAILS: 2 26/09/2025 MINOR MARK-UPS | 1 18/09/2025 ISSUED FOR CONSTRUCTION

BRIDGE REPAIRS PROPOSED EARTHWORKS SHEET 2

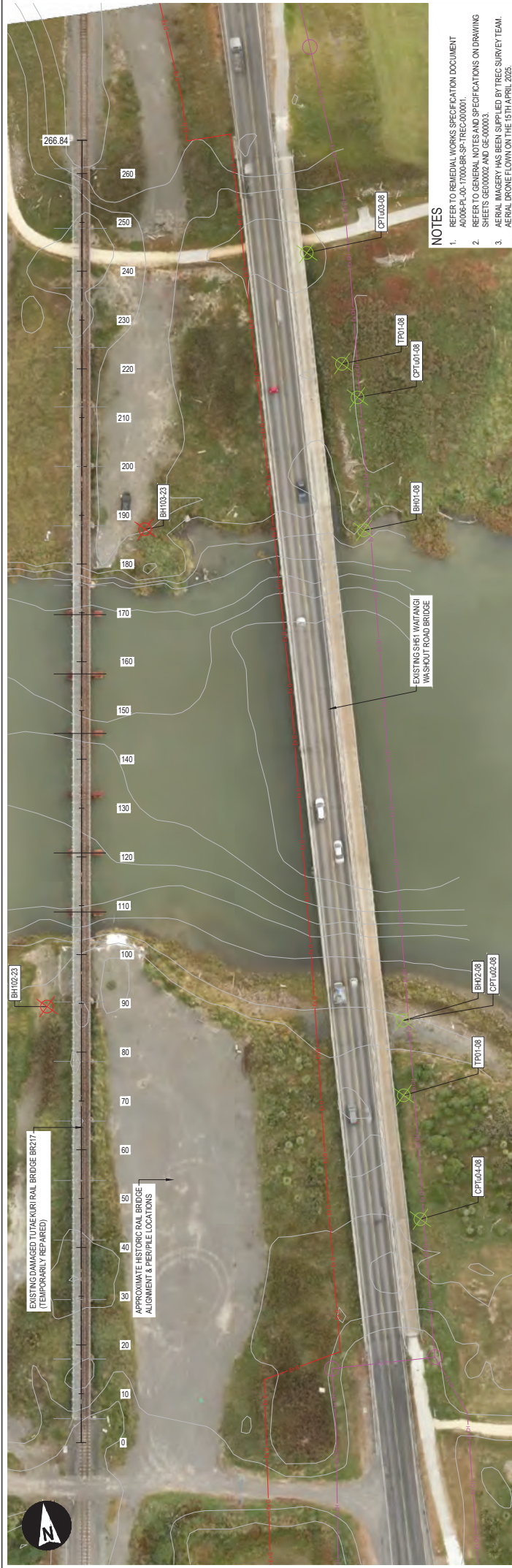
PROJECT INFORMATION: BRIDGE 217 | PNLG - 170.5031 | DOCUMENT CODE: A0006-PL-00-00000-BR-DG-TREC-001002

STATUS: ISSUED FOR CONSTRUCTION | APPROVED: B. RYDER | DATE: 26/09/2025

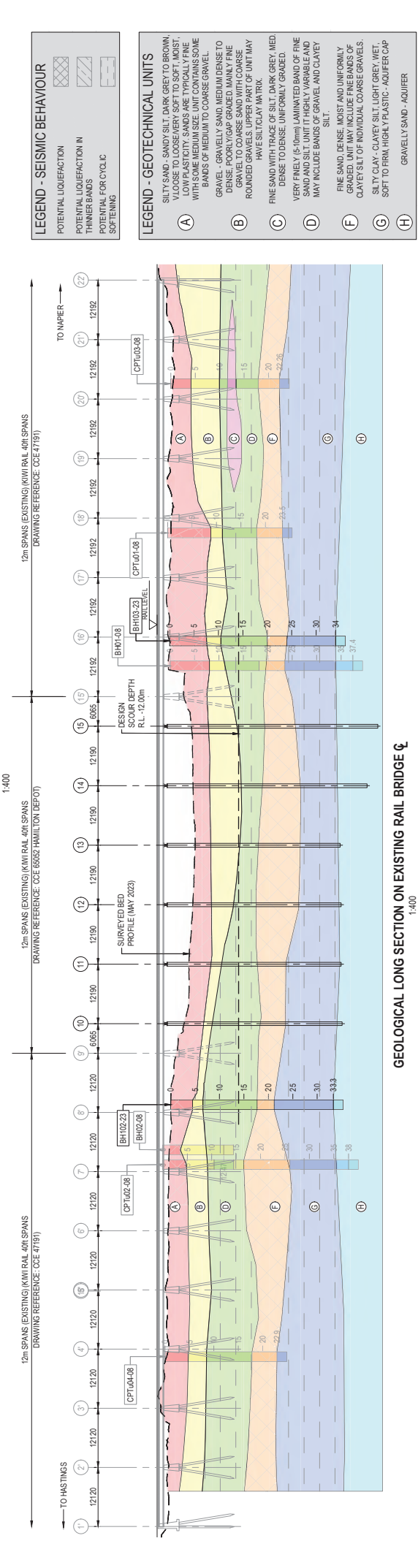
DRAWN: J. LUAREZ | 26/09/2025 | DRG CHECK: N. SALINAS | 26/09/2025 | DESIGN: B. MINNIES | 26/09/2025 | VERIFIED: W. WANG | 26/09/2025 | PROJECT LEAD: B. RYDER | 26/09/2025

SCALE: 1:500 | SIZE: A1 | REFERENCE NO.: BR-001002 | REV: 2

ZONE A - RAIL | COORDINATE SYSTEM: HAWKES BAY 2000, VERTICAL DATUM: NZVD16 | ORIGINAL 'A' COLOUR DETAIL MAY BE LOST IF COPIED



PLAN - EXISTING GROUND INVESTIGATION LOCATIONS
1:400



GEOLOGICAL LONG SECTION ON EXISTING RAIL BRIDGE
1:400

LEGEND - SEISMIC BEHAVIOUR

POTENTIAL LIQUEFACTION	
POTENTIAL LIQUEFACTION IN THINNER BANDS	
POTENTIAL FOR CYCLIC SOFTENING	

LEGEND - GEOTECHNICAL UNITS

(A)	SILTY SAND - SANDY SILT, DARK GREY TO BROWN, V. LOOSE TO LOOSE/VERY SOFT TO SOFT, MOIST, LOW PLASTICITY. SANDS ARE TYPICALLY FINE WITH SOME MEDIUM SIZE. UNIT CONTAINS SOME BANDS OF MEDIUM TO COARSE GRAVEL.
(B)	GRAVEL - GRAVELLY SAND, MEDIUM DENSE TO DENSE, POORLY GRADED, MAINLY FINE GRAINED. COARSE SURFACE PART OF UNIT MAY HAVE SILT/CLAY MATRIX.
(C)	FINE SAND WITH TRACE OF SILT, DARK GREY, MED. DENSE TO DENSE, UNIFORMLY GRADED.
(D)	VERY FINELY (5-10mm) LAMINATED BAND OF FINE SAND AND SILT UNIT WITH HEAVILY VARIABLE AND MAY INCLUDE BANDS OF GRAVEL AND CLAYEY SILT.
(E)	FINE SAND, DENSE, MOIST AND UNIFORMLY GRADED. UNIT MAY INCLUDE FINE BANDS OF CLAYEY SILT OF INDIVIDUAL COARSE GRAVELS.
(G)	SILTY CLAY, CLAYEY SILT, LIGHT GREY, WET, SOFT TO FIRM, HIGHLY PLASTIC - AQUIFER CAP.
(H)	GRAVELLY SAND - AQUIFER

PROJECT INFORMATION

BRIDGE 217	PNGL - 170.5031
DOCUMENT CODE	A0006-PL-00-00000-BR-DG-TREC-003001
SCALE	1:400
SIZE	A1
REFERENCE NO.	BR-003001
REV	1

TITLE

BRIDGE REPAIRS
EXISTING RAIL BRIDGE
PLAN AND GEOLOGICAL LONGSECTION

STATUS

ISSUED FOR CONSTRUCTION	18/09/2025
APPROVED	18/09/2025
APPROVED BY	B. RYDER
DATE	18/09/2025

APPROVED

DRAWN	J. LIAO
DRG CHECK	N. SALINAS
DESIGN	B. MINNIS
VERIFIED	W. WANG
PROJECT LEAD	B. RYDER

PROJECT

Transport Rebuild East Coast

REV | **DATE** | **REVISION DETAILS**

1	18/09/2025	ISSUED FOR CONSTRUCTION
---	------------	-------------------------

APPROVED

B. RYDER

TRANSPORT REBUILD EAST COAST

KiwiRail

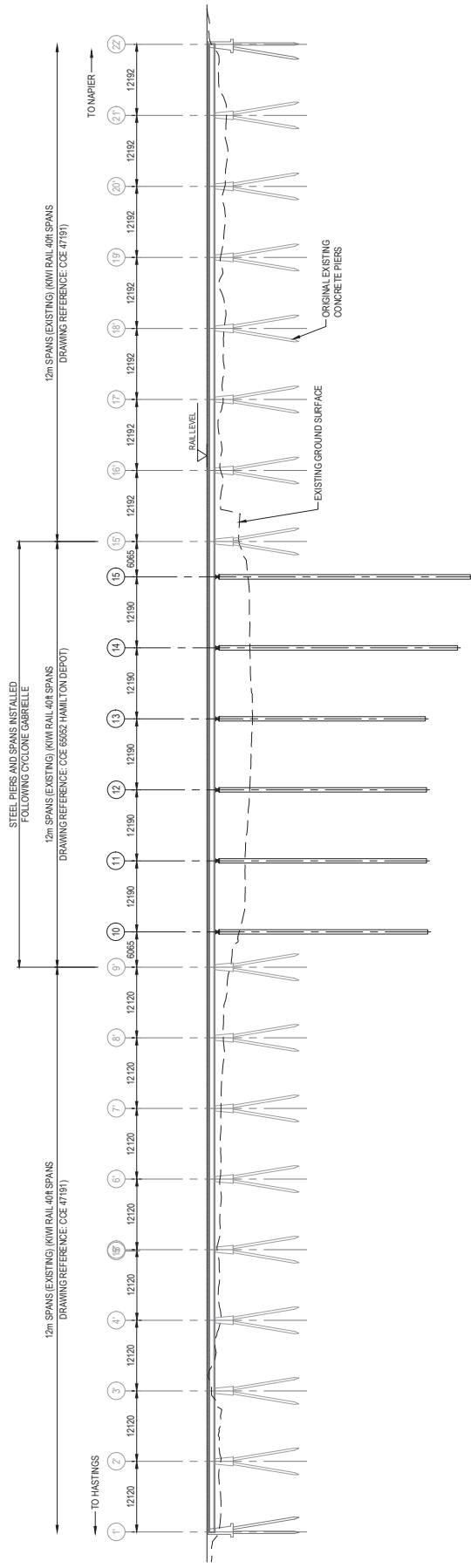
ZONE A - RAIL
COORDINATE SYSTEM: HAWKES BAY 2000, VERTICAL DATUM: NZVD16
ORIGINAL IN COLOUR DETAIL MAY BE LOST IF COPIED

NOTES

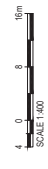
1. REFER TO REMEDIAL WORKS SPECIFICATION DOCUMENT A0006-PL-00-170000-BR-SP-TREC-000001.
2. REFER TO GENERAL NOTES AND SPECIFICATIONS ON DRAWING SHEETS GE000002 AND GE000003.
3. AERIAL IMAGERY HAS BEEN SUPPLIED BY TREC SURVEY TEAM. AERIAL DRONE FLOW ON THE 15TH APRIL 2025.



PLAN - EXISTING RAIL BRIDGE
1:400



ELEVATION - EXISTING RAIL BRIDGE
1:400



PROJECT		REVISION DETAILS		APPROVED		STATUS		TITLE		PROJECT INFORMATION	
REV	DATE	ISSUED FOR CONSTRUCTION	ISSUED FOR CONSTRUCTION	APPROVED	CONSTRUCTION	ISSUED FOR CONSTRUCTION	CONSTRUCTION	BRIDGE 217	BRIDGE 217	SCALE	REFERENCE NO.
1	18/09/2025	ISSUED FOR CONSTRUCTION	ISSUED FOR CONSTRUCTION	BRYDER	CONSTRUCTION	18/09/2025	18/09/2025	PNGL - 170.5031	PNGL - 170.5031	A1	BR-003002
								GENERAL ARRANGEMENT	GENERAL ARRANGEMENT	1:400	BR-003002
								PLAN AND ELEVATION	PLAN AND ELEVATION		
								APPROVED	APPROVED		
								B. RYDER	B. RYDER		
								APPROVED BY	APPROVED BY		
								B. RYDER	B. RYDER		
								DATE	DATE		
								18/09/2025	18/09/2025		
								PROJECT LEAD	PROJECT LEAD		
								B. RYDER	B. RYDER		

Transport Rebuild East Coast



ZONE A - RAIL
COORDINATE SYSTEM: HAWKES BAY 2000, VERTICAL DATUM: NZVD16
ORIGINAL IN COLOUR DETAIL MAY BE LOST IF COPIED

