

LOCALITY PLAN
N.T.S

LEGEND	
EXISTING KIWI RAIL TRACK	— — — — —
PROPERTY BOUNDARY	- - - - -
RAIL CHAINAGE	700

DRAWING LIST		
DWG No.	REV	DESCRIPTION
A0006-PL-000-00000-GE-DG-TREC-000001	B	COVER SHEET, LOCALITY PLAN AND DRAWING LIST
A0006-PL-000-00000-BR-DG-TREC-000002	B	BRIDGE REPAIRS - GENERAL NOTES AND SPECIFICATIONS SHEET 1
A0006-PL-000-00000-BR-DG-TREC-000003	B	BRIDGE REPAIRS - GENERAL NOTES AND SPECIFICATIONS SHET 2
A0006-PL-000-00000-BR-DG-TREC-001001	B	BRIDGE REPAIRS - PROPOSED EARTHWORKS
A0006-PL-000-00000-BR-DG-TREC-003001	B	BRIDGE REPAIRS - EXISTING RAIL BRIDGE PLAN AND GEOLOGICAL LONG SECTIONS
A0006-PL-000-00000-BR-DG-TREC-003002	B	BRIDGE REPAIRS - GENERAL ARRANGEMENT PLAN AND ELEVATION
A0006-PL-000-00000-BR-DG-TREC-003003	B	BRIDGE REPAIRS - SPAN REPLACEMENT GENERAL ARRANGEMENT
A0006-PL-000-00000-BR-DG-TREC-003004	A	BRIDGE REPAIRS - REVETMENT PROTECTION - PLAN AND ELEVATION
A0006-PL-000-00000-BR-DG-TREC-003021	A	BRIDGE REPAIRS - REVETMENT PROTECTION - PLAN AND ELEVATION - SHEET 1
A0006-PL-000-00000-BR-DG-TREC-003022	A	BRIDGE REPAIRS - REVETMENT PROTECTION - PLAN AND ELEVATION - SHEET 2
A0006-PL-000-00000-BR-DG-TREC-004001	B	BRIDGE REPAIRS - SPAN REPLACEMENT STRUCTURAL DETAILS - SHEET 1
A0006-PL-000-00000-BR-DG-TREC-004002	B	BRIDGE REPAIRS - SPAN REPLACEMENT STRUCTURAL DETAILS - SHEET 2
A0006-PL-000-00000-BR-DG-TREC-004003	B	BRIDGE REPAIRS - SPAN REPLACEMENT STRUCTURAL DETAILS - SHEET 3
A0006-PL-000-00000-BR-DG-TREC-004004	B	BRIDGE REPAIRS - SPAN REPLACEMENT STRUCTURAL DETAILS - SHEET 4
A0006-PL-000-00000-BR-DG-TREC-004005	B	BRIDGE REPAIRS - SPAN REPLACEMENT STRUCTURAL DETAILS - SHEET 5
A0006-PL-000-00000-BR-DG-TREC-004006	B	BRIDGE REPAIRS - SPAN REPLACEMENT STRUCTURAL DETAILS - SHEET 6
A0006-PL-000-00000-BR-DG-TREC-006001	A	BRIDGE REPAIRS - PROPOSED EARTHWORKS - DETAILED CROSS SECTIONS - SHEET 1
A0006-PL-000-00000-BR-DG-TREC-006002	A	BRIDGE REPAIRS - PROPOSED EARTHWORKS - DETAILED CROSS SECTIONS - SHEET 2
A0006-PL-000-00000-BR-DG-TREC-006003	A	BRIDGE REPAIRS - PROPOSED EARTHWORKS - DETAILED CROSS SECTIONS - SHEET 3

PRIVILEGED FOR THE PURPOSE OF SEEKING OR ENABLING LEGAL ADVICE

Transport Rebuild East Coast



ZONE A - RAIL
COORDINATE SYSTEM: HAWKES BAY 2000, VERTICAL DATUM: NZVD16
ORIGINAL IN COLOUR DETAIL MAY BE LOST IF COPIED

REV	DATE	REVISION DETAILS	APPROVED
B	25/07/2025	ISSUED FOR DETAILED DESIGN - 90%	B.RYDER
A	03/06/2025	ISSUED FOR DETAILED DESIGN - 50%	B.RYDER

STATUS	TITLE
ISSUED FOR DETAILED DESIGN	COVER SHEET, LOCALITY PLAN AND DRAWING LIST
APPROVED	
APPROVED BY	DATE
B. RYDER	25/07/2025

PROJECT INFORMATION
BRIDGE 217 PNGL - 170.5031
DOCUMENT CODE A0006-PL-00-00000-GE-DG-TREC-000001
SCALE AS SHOWN
SIZE A1
REFERENCE No. GE-000001
REV B

Plot Date: 7/31/2025 3:00 PM | Plotted By: Josephine Villar-Luarez | Original File: C:\2025\DATA\TREC\SY\VA0006_137300_DESIGN\2025_DRAWINGS\A006-GE-DG-TREC-00001.DWG | Tab: [001]



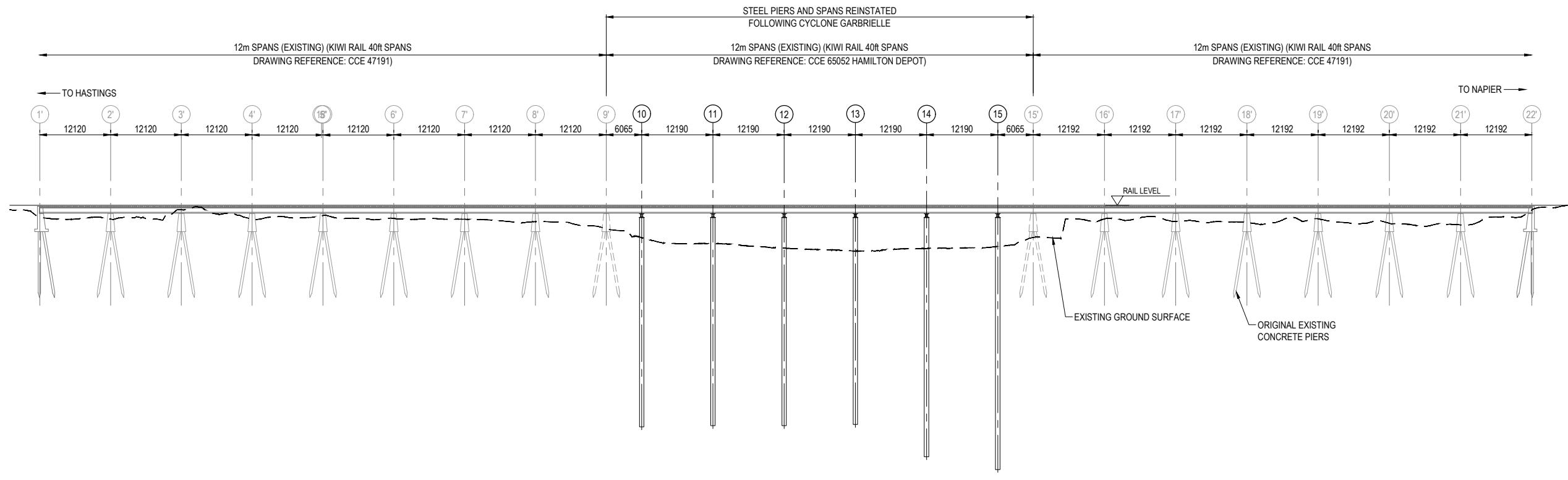
NOTES

- FOR GENERAL NOTES AND SPECIFICATIONS, REFER TO DRAWINGS GE-000002 AND GE-000003.
- AERIAL IMAGERY HAS BEEN SUPPLIED BY TREC SURVEY TEAM. AERIAL DRONE FLOWN ON THE 15TH OF APRIL 2025.



PLAN - EXISTING RAIL BRIDGE

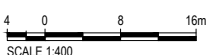
1:400



ELEVATION - EXISTING RAIL BRIDGE

1:400

PRIVILEGED FOR THE PURPOSE OF SEEKING OR ENABLING LEGAL ADVICE



Transport Rebuild East Coast

ZONE A - RAIL
COORDINATE SYSTEM: HAWKES BAY 2000, VERTICAL DATUM: NZVD16
ORIGINAL IN COLOUR DETAIL MAY BE LOST IF COPIED

REV	DATE	REVISION DETAILS	APPROVED
B	25/07/2025	ISSUED FOR DETAILED DESIGN - 90%	B.RYDER
A	03/06/2025	ISSUED FOR DETAILED DESIGN - 50%	B.RYDER

STATUS		
DRAWN	J.LUAREZ	25/07/2025
DRG CHECK	N.SALINAS	25/07/2025
DESIGN	B.McINNES	25/07/2025
VERIFIED	W. WANG	25/07/2025
PROJECT LEAD	B.RYDER	25/07/2025

STATUS	
ISSUED FOR DETAILED DESIGN	
APPROVED	
B.RYDER	
APPROVED BY	DATE
B.RYDER	25/07/2025

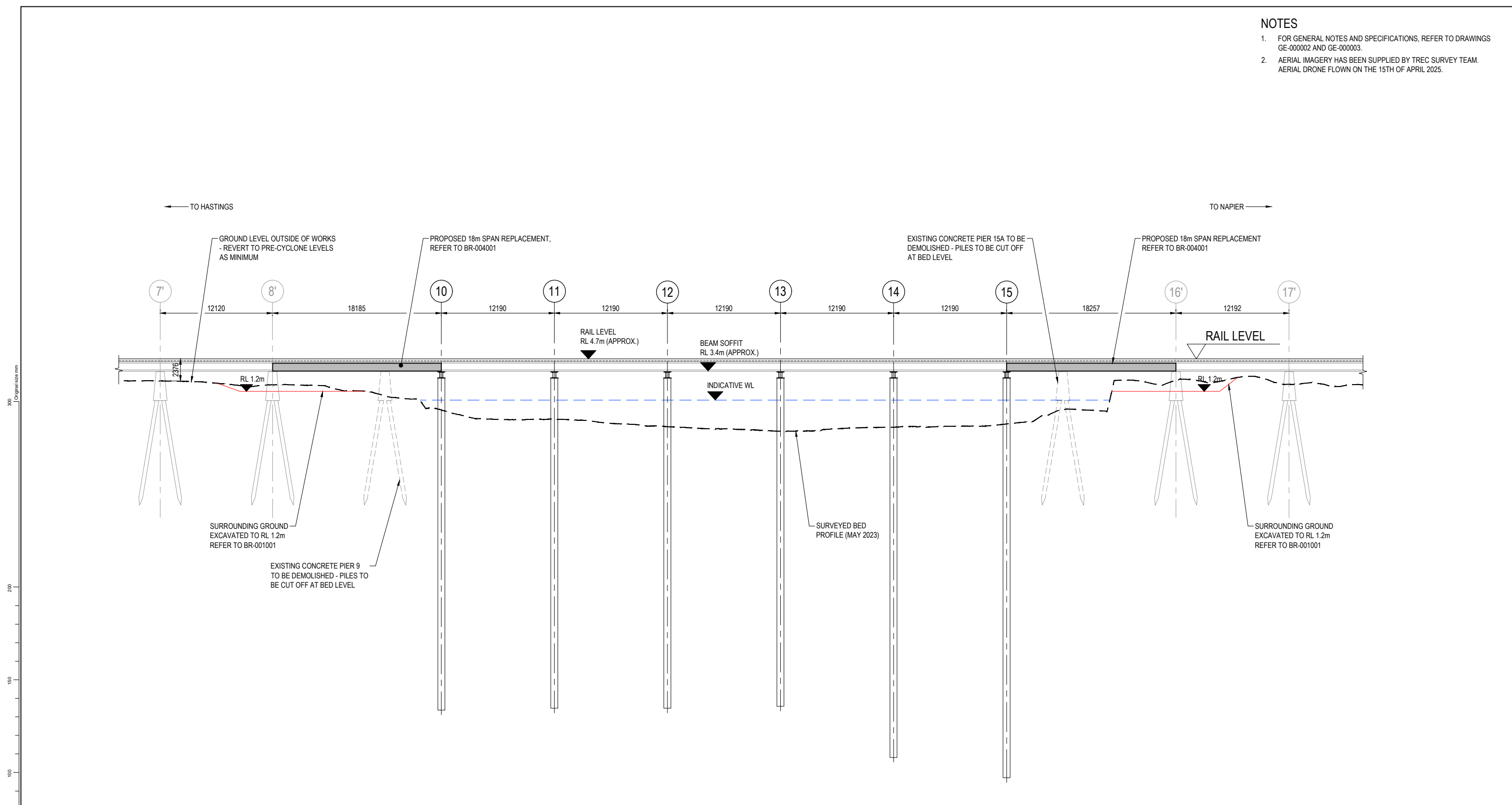
TITLE
BRIDGE REPAIRS GENERAL ARRANGEMENT PLAN AND ELEVATION

PROJECT INFORMATION			
BRIDGE 217 PNGL - 170.5031			
DOCUMENT CODE A0006-PL-00-00000-BR-DG-TREC-003002			
SCALE	SIZE	REFERENCE No.	REV
1:400	A1	BR-003002	B

Plot Date: 7/25/2025 11:04 AM | Plotted By: Josephine Vilar Luarez | Original File: C:\123050\DATA\TREC\SYN\A0006_137200_DESIGN\203_DRAWINGS\A0006-BR-DG-TREC-003002.DWG | Tab: [002]

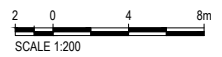
NOTES

- FOR GENERAL NOTES AND SPECIFICATIONS, REFER TO DRAWINGS GE-000002 AND GE-000003.
- AERIAL IMAGERY HAS BEEN SUPPLIED BY TREC SURVEY TEAM. AERIAL DRONE FLOWN ON THE 15TH OF APRIL 2025.



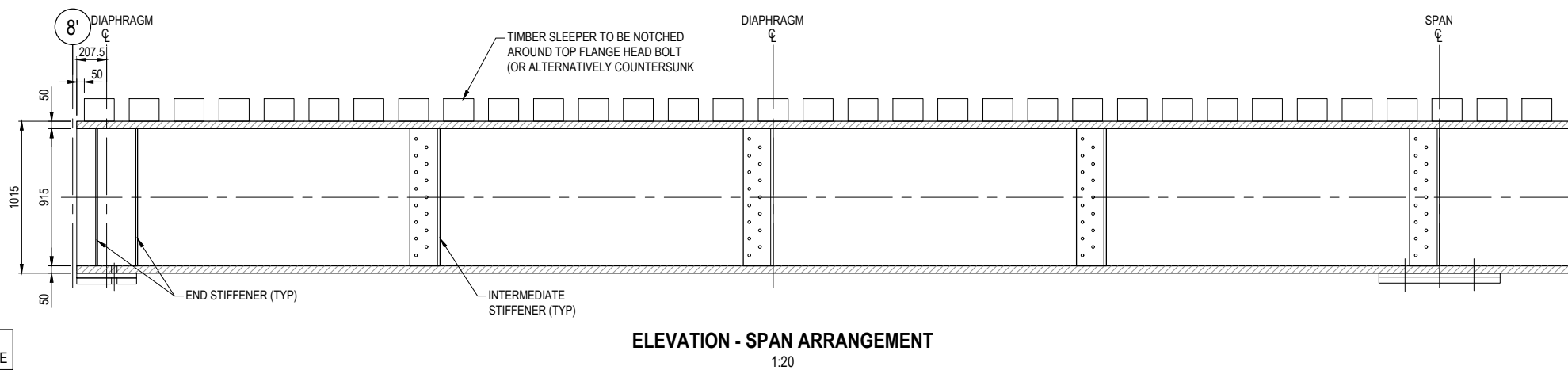
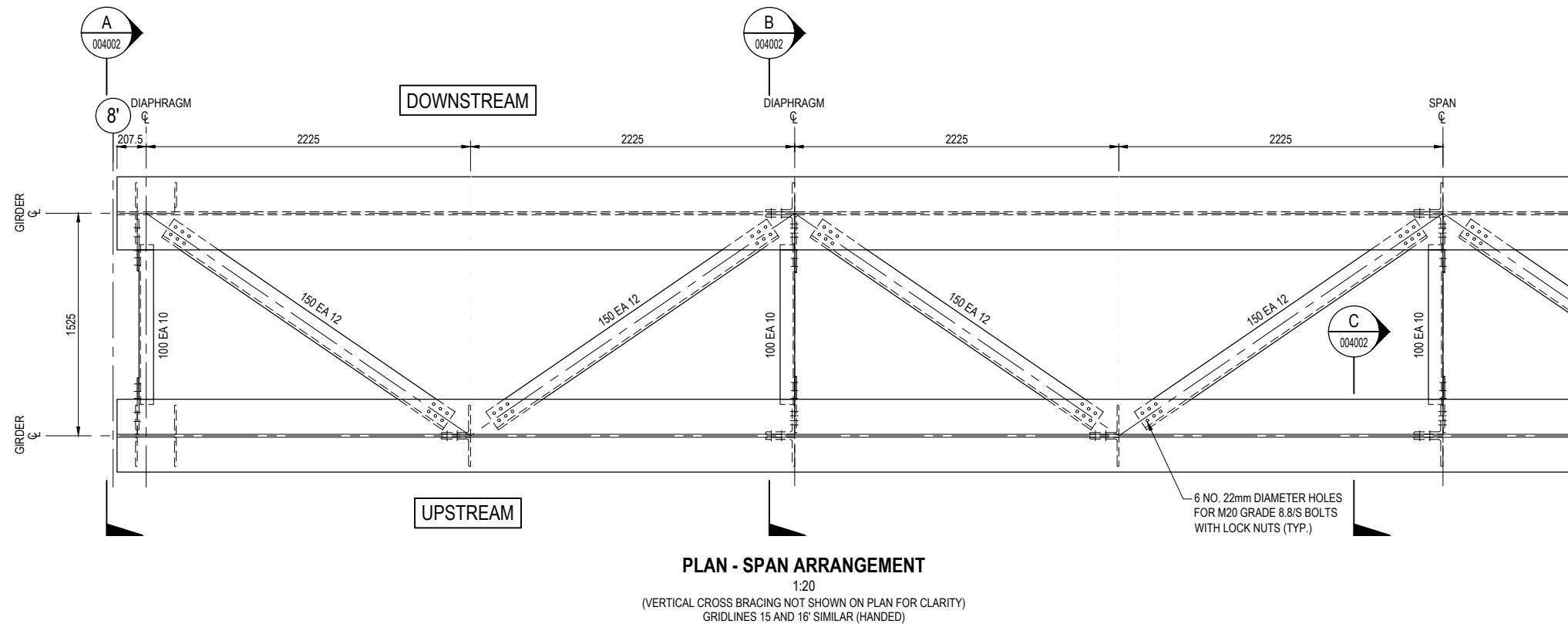
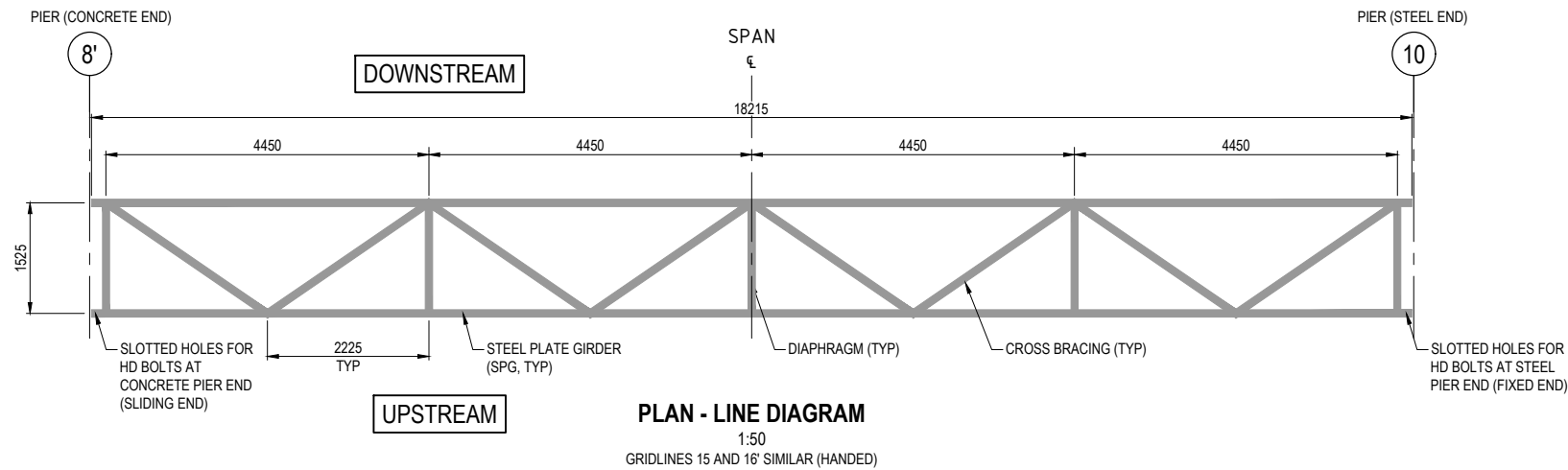
ELEVATION - SPAN REPLACEMENT
1:200

PRIVILEGED FOR THE PURPOSE OF SEEKING OR ENABLING LEGAL ADVICE



PROJECT				REVISION DETAILS			APPROVED		STATUS			TITLE		PROJECT INFORMATION				
Transport Rebuild East Coast 				REV	DATE	REVISION DETAILS	APPROVED		ISSUED FOR DETAILED DESIGN			BRIDGE REPAIRS SPAN REPLACEMENT GENERAL ARRANGEMENT		BRIDGE 217				
				B	25/07/2025	ISSUED FOR DETAILED DESIGN - 90%	B.RYDER	DRAWN	S. LAL	25/07/2025	ISSUED FOR DETAILED DESIGN			PNGL - 170.5031				
NZ TRANSPORT AGENCY KIWIRAIL				A	03/06/2025	ISSUED FOR DETAILED DESIGN - 50%	B.RYDER	DRG CHECK	N.SALINAS	25/07/2025	APPROVED			DOCUMENT CODE				
											DESIGN	B.McINNIS	25/07/2025	B.RYDER			A0006-PL-00-00000-BR-DG-TREC-003003	
ZONE A - RAIL COORDINATE SYSTEM: HAWKES BAY 2000, VERTICAL DATUM: NZVD16 ORIGINAL IN COLOUR DETAIL MAY BE LOST IF COPIED									VERIFIED	W. WANG	25/07/2025	APPROVED BY		DATE	SCALE	SIZE	REFERENCE No.	REV
											PROJECT LEAD	B.RYDER	25/07/2025	B.RYDER		25/07/2025	1:200	A1

Plot Date: 7/25/2025 11:56 AM | Plotted By: Josephine Villar Luarez | Original File: C:\12\DS\DATA\TREC\SYN\A0006_137200_DESIGN\2023_DRAWINGS\A0006-BR-DG-TREC-003003.DWG | Tac: [003]



NOTES

- FOR GENERAL NOTES AND SPECIFICATIONS, REFER TO DRAWINGS GE-000002 AND GE-000003.
- 18m STEEL PLATE GIRDER (SPG):
 - SPAN DESIGNED TO REDUCE LIVE LOAD MODEL 170 LA
 - IMPACT AND LINE SPEED: 70km/hr
 - DEFLECTION TO AS5100.2 AS PER RAIL ANNEX
 - ALL ELEMENTS TO BE PROTECTED BY TS2200S TO ACHIEVE 25 YEAR LIFE TO FIRST MAINTENANCE

PRECAMBER REQUIREMENTS

- PRE-CAMBER REQUIRED: +10mm AT MIDSPAN
- SHAPE: UNIFORM PARABOLIC PROFILE FROM ZERO AT SUPPORTS TO MAXIMUM AT MIDSPAN.
- PRE-CAMBER VALUES ARE SPECIFIED TO MEET FINAL GEOMETRIC REQUIREMENTS UNDER FULL DEAD LOAD AND SUPERIMPOSED LOAD, e.g., TRACK AND SLEEPERS.
- ALL CAMBER REQUIREMENTS TO BE TAKEN IN THE FABRICATION YARD PRIOR TO TRANSPORT.
- FABRICATOR TO SUBMIT CAMBER MEASUREMENT REPORT TO ENGINEER FOR APPROVAL.
- CAMBER TO BE FORMED INTO GIRDER SECTION DURING FABRICATION; NO FIELD ADJUSTMENT PERMITTED.
- GIRDERS TO BE SUPPORTED AT DESIGN BEARING LOCATIONS DURING MEASUREMENT.

HOLD POINT

- SHOP DRAWING TO BE SUBMITTED TO THE ENGINEER FOR APPROVAL.

300 Original size mm
200
150
100
50
10
0

PRIVILEGED FOR THE PURPOSE OF SEEKING OR ENABLING LEGAL ADVICE



Transport Rebuild East Coast

NZ TRANSPORT AGENCY | **KiwiRail**

ZONE A - RAIL
COORDINATE SYSTEM: HAWKES BAY 2000, VERTICAL DATUM: NZVD16
ORIGINAL IN COLOUR DETAIL MAY BE LOST IF COPIED

REV	DATE	REVISION DETAILS
B	25/07/2025	ISSUED FOR DETAILED DESIGN - 90%
A	03/06/2025	ISSUED FOR DETAILED DESIGN - 50%

APPROVED	STATUS
B.RYDER	ISSUED FOR DETAILED DESIGN
B.RYDER	APPROVED
B.RYDER	APPROVED BY
B.RYDER	DATE

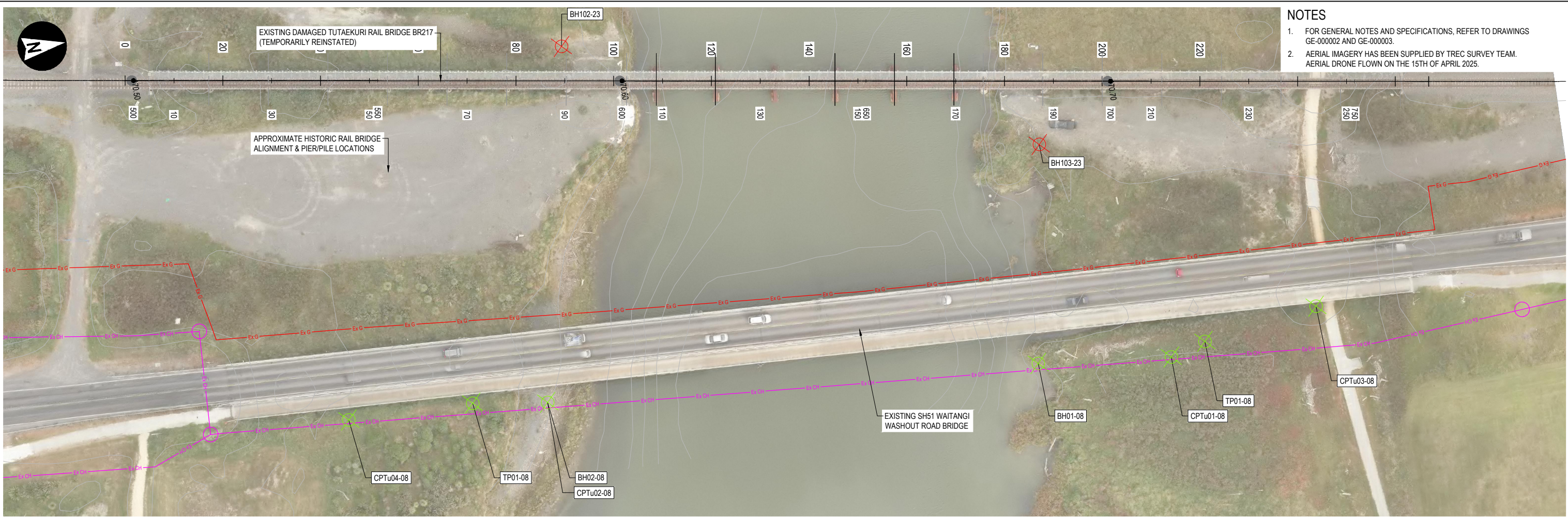
APPROVED	DATE
B.RYDER	25/07/2025

TITLE

BRIDGE REPAIRS
SPAN REPLACEMENT
STRUCTURAL DETAILS
SHEET 1

PROJECT INFORMATION			
BRIDGE 217 PNGL - 170.5031			
DOCUMENT CODE A0006-PL-00-00000-BR-DG-TREC-004001			
SCALE	SIZE	REFERENCE No.	REV
AS SHOWN	A1	BR-004001	B

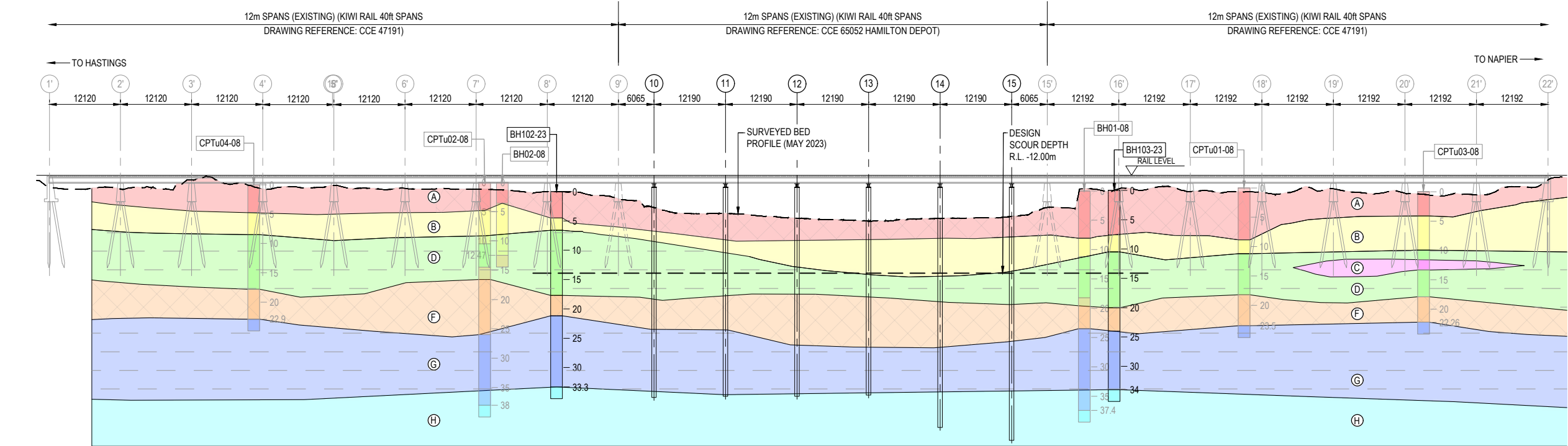
Plot Date: 7/25/2025 11:22 AM | Plotted By: Josephine Villar Luarez | Original File: C:\12\DS\DATA\TREC\SYS\A0006_137200_DESIGN\203_DRAWINGS\A0006-BR-DG-TREC-004001-005.DWG | Tab: 1001



- NOTES**
- FOR GENERAL NOTES AND SPECIFICATIONS, REFER TO DRAWINGS GE-000002 AND GE-000003.
 - AERIAL IMAGERY HAS BEEN SUPPLIED BY TREC SURVEY TEAM. AERIAL DRONE FLOWN ON THE 15TH OF APRIL 2025.

PLAN - EXISTING GROUND INVESTIGATION LOCATIONS

1:1000



GEOLOGICAL LONG SECTION ON EXISTING RAIL BRIDGE

1:400

LEGEND - SEISMIC BEHAVIOUR

- POTENTIAL LIQUEFACTION
- POTENTIAL LIQUEFACTION IN THINNER BANDS
- POTENTIAL FOR CYCLIC SOFTENING

LEGEND - GEOTECHNICAL UNITS

- (A)** SILTY SAND - SANDY SILT, DARK GREY TO BROWN, V. LOOSE TO LOOSE/VERY SOFT TO SOFT, MOIST, LOW PLASTICITY. SANDS ARE TYPICALLY FINE WITH SOME MEDIUM SIZE. UNIT CONTAINS SOME BANDS OF MEDIUM TO COARSE GRAVEL.
- (B)** GRAVEL - GRAVELLY SAND, MEDIUM DENSE TO DENSE, POORLY/GAP GRADED. MAINLY FINE GRAVEL TO COARSE SAND WITH COARSE ROUNDED GRAVELS. UPPER PART OF UNIT MAY HAVE SILT/CLAY MATRIX.
- (C)** FINE SAND WITH TRACE OF SILT, DARK GREY, MED. DENSE TO DENSE, UNIFORMLY GRADED.
- (D)** VERY FINELY (5-10mm) LAMINATED BAND OF FINE SAND AND SILT. UNIT IS HIGHLY VARIABLE AND MAY INCLUDE BANDS OF GRAVEL AND CLAYEY SILT.
- (F)** FINE SAND, DENSE, MOIST AND UNIFORMLY GRADED. UNIT MAY INCLUDE FINE BANDS OF CLAYEY SILT OF INDIVIDUAL COARSE GRAVELS.
- (G)** SILTY CLAY - CLAYEY SILT, LIGHT GREY, WET, SOFT TO FIRM, HIGHLY PLASTIC - AQUIFER CAP
- (H)** GRAVELLY SAND - AQUIFER

PRIVILEGED FOR THE PURPOSE OF SEEKING OR ENABLING LEGAL ADVICE



Transport Rebuild East Coast



REV	DATE	REVISION DETAILS	APPROVED
B	25/07/2025	ISSUED FOR DETAILED DESIGN - 90%	B.RYDER
A	03/06/2025	ISSUED FOR DETAILED DESIGN - 50%	B.RYDER

STATUS	TITLE
ISSUED FOR DETAILED DESIGN	BRIDGE REPAIRS EXISTING RAIL BRIDGE
APPROVED	PNGL - 170.5031
B.RYDER	DOCUMENT CODE
APPROVED BY	A0006-PL-00-00000-BR-DG-TREC-003001
DATE	SCALE
25/07/2025	AS SHOWN
	SIZE
	A1
	REFERENCE No.
	BR-003001
	REV
	B

PROJECT	DATE	REVISION DETAILS	APPROVED
B	25/07/2025	ISSUED FOR DETAILED DESIGN - 90%	B.RYDER
A	03/06/2025	ISSUED FOR DETAILED DESIGN - 50%	B.RYDER

PROJECT	DATE	REVISION DETAILS	APPROVED
B	25/07/2025	ISSUED FOR DETAILED DESIGN - 90%	B.RYDER
A	03/06/2025	ISSUED FOR DETAILED DESIGN - 50%	B.RYDER

PROJECT	DATE	REVISION DETAILS	APPROVED
B	25/07/2025	ISSUED FOR DETAILED DESIGN - 90%	B.RYDER
A	03/06/2025	ISSUED FOR DETAILED DESIGN - 50%	B.RYDER

ZONE A - RAIL
COORDINATE SYSTEM: HAWKES BAY 2000, VERTICAL DATUM: NZVD16
ORIGINAL IN COLOUR DETAIL MAY BE LOST IF COPIED

Plot Date: 7/25/2025 11:02 AM | Plotted By: Josephine Vilar Luarez | Original File: C:\125052\A\TREC\SYN\A006_137\200_DESIGN\020_DRAWINGS\A006-BR-DG-TREC-003001.DWG | Tac: [001]