

CUT FILL DEPTH ANALYSIS

LOWER VALUE	UPPER VALUE	COLOUR
-2.0	to -1.8	m
-1.8	to -1.6	m
-1.6	to -1.4	m
-1.4	to -1.2	m
-1.2	to -1.0	m
-1.0	to -0.8	m
-0.8	to -0.6	m
-0.6	to -0.4	m
-0.4	to -0.2	m
-0.2	to 0.0	m
0.0	to 0.2	m
0.2	to 0.4	m
0.4	to 0.6	m
0.6	to 0.8	m
0.8	to 1.0	m
1.0	to 1.2	m
1.2	to 1.4	m
1.4	to 1.6	m
1.6	to 1.8	m
1.8	to 2.0	m
2.0	to 2.2	m
2.2	to 2.4	m
2.4	to 2.6	m
2.6	to 2.8	m
2.8	to 3.0	m
3.0	to 3.2	m
3.2	to 3.4	m
3.4	to 3.6	m
3.6	to 3.8	m

TOTAL VOLUMES (m ³)	
TOTAL CUT	4263
TOTAL FILL	30775
TOTAL BALANCE	26492

0 31.25 62.5 m
 1:1250 (A1)
 1:2500 (A3)

NOTES

- COORDINATE DATUM: NZGD2000, NEW ZEALAND TRANSVERSE MERCATOR (NZTM2000).
- AERIAL PHOTO SOURCED FROM LAND INFORMATION NEW ZEALAND DATA (CROWN COPYRIGHT RESERVED).
- PROPERTY BOUNDARIES SUPPLIED BY The Surveying Company Limited, REF "243082-TP-01.DWG" DATED 29/02/2024.
- EXISTING CONTOUR DERIVED FROM 20240301 UAV DATA, REF "HRC Omaha Filtered.las".
- FOR THE FULL EXTENT OF THE HAWKES BAY REGIONAL COUNCIL OIC AREA REFER TO DRAWING 1017353.2402-TT-010.

LEGEND

- PROPERTY BOUNDARY
- 30 EXISTING MAJOR CONTOUR (5m INTERVAL)
- EXISTING MINOR CONTOUR (1m INTERVAL)
- HAWKES BAY REGIONAL COUNCIL OIC BOUNDARY

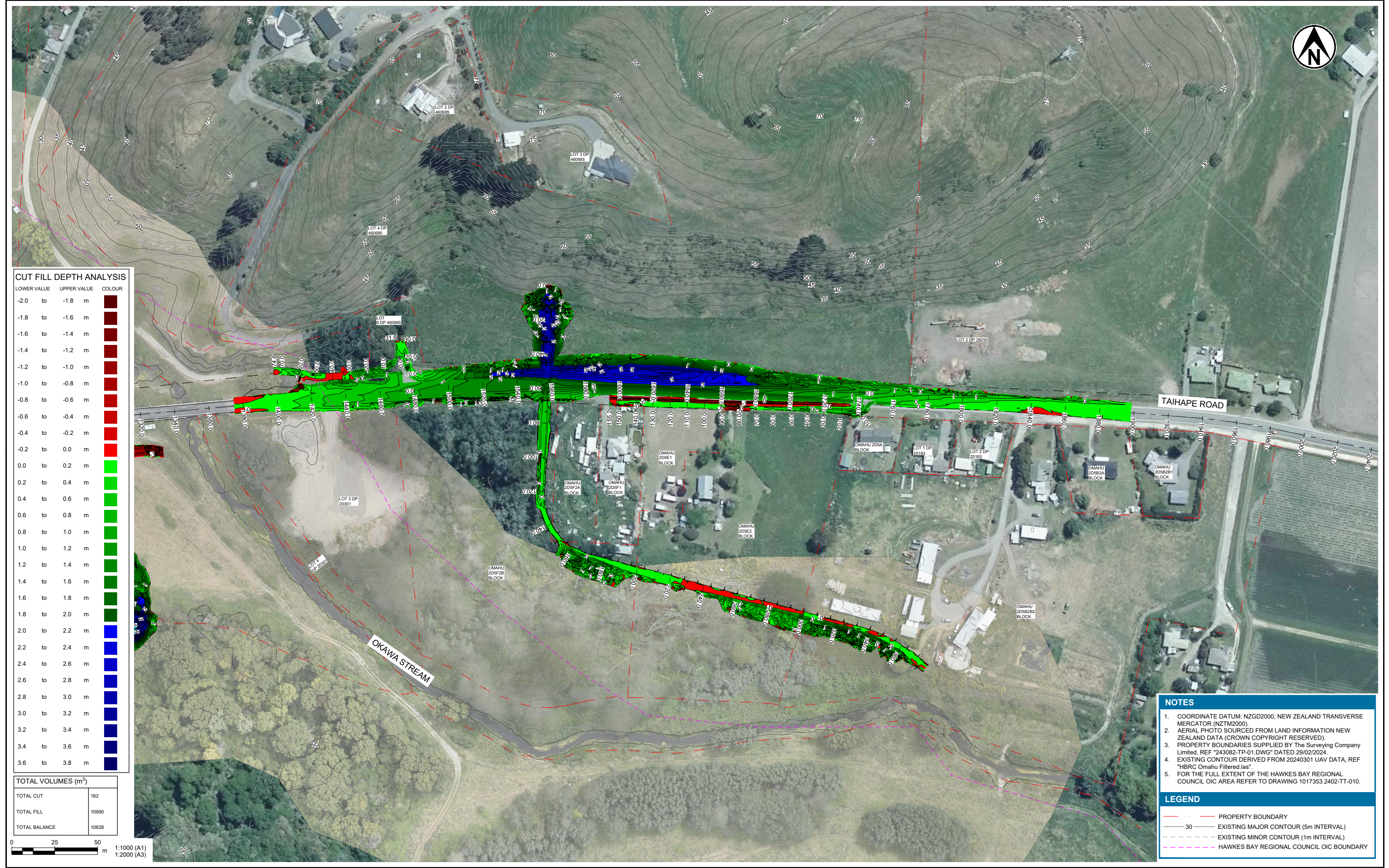


www.tonkintaylor.co.nz

DESIGNED	STLP	Feb.25	DRAWING STATUS	CLIENT REVIEW
DRAWN	ALPO	Feb.25	DESIGN CHECKED	JWY 08.08.25
DESIGN CHECKED	JWY	08.08.25	DRAWING CHECKED	WYHU 08.08.25
NOT FOR CONSTRUCTION			THIS DRAWING IS NOT TO BE USED FOR CONSTRUCTION PURPOSES UNLESS SIGNED AS APPROVED	
APPROVED	DATE		DATE	

CLIENT	HAWKES BAY REGIONAL COUNCIL
PROJECT	OHITI ROAD FLOOD PROTECTION STOPBANK WORKS
TITLE PLAN	OHITI ROAD AND STOPBANK - CUT AND FILL
SCALE (A1)	1:1250
DWG No.	1017353.2402-TT-012
REV	2

1	PRELIMINARY DRAFT	ALPO	TIBR	18.03.25
2	PRELIMINARY DESIGN ISSUE	ALPO	JWY	24.07.25
3	PRELIMINARY DESIGN ISSUE OIC AND LAND DATA	ALPO	JWY	08.08.25
REV	DESCRIPTION	CAD	CHK	DATE



CUT FILL DEPTH ANALYSIS

LOWER VALUE	UPPER VALUE	COLOUR
-2.0	to -1.8	Dark Red
-1.8	to -1.6	Red
-1.6	to -1.4	Dark Red
-1.4	to -1.2	Red
-1.2	to -1.0	Dark Red
-1.0	to -0.8	Red
-0.8	to -0.6	Dark Red
-0.6	to -0.4	Red
-0.4	to -0.2	Dark Red
-0.2	to 0.0	Red
0.0	to 0.2	Light Green
0.2	to 0.4	Green
0.4	to 0.6	Light Green
0.6	to 0.8	Green
0.8	to 1.0	Light Green
1.0	to 1.2	Green
1.2	to 1.4	Light Green
1.4	to 1.6	Green
1.6	to 1.8	Light Green
1.8	to 2.0	Green
2.0	to 2.2	Light Green
2.2	to 2.4	Green
2.4	to 2.6	Light Green
2.6	to 2.8	Green
2.8	to 3.0	Light Green
3.0	to 3.2	Green
3.2	to 3.4	Light Green
3.4	to 3.6	Green
3.6	to 3.8	Light Green

TOTAL VOLUMES (m³)

TOTAL CUT	162
TOTAL FILL	10990
TOTAL BALANCE	10828

0 25 50 m
 1:1000 (A1)
 1:2000 (A3)

NOTES

- COORDINATE DATUM: NZGD2000, NEW ZEALAND TRANSVERSE MERCATOR (NZTM2000).
- AERIAL PHOTO SOURCED FROM LAND INFORMATION NEW ZEALAND DATA (CROWN COPYRIGHT RESERVED).
- PROPERTY BOUNDARIES SUPPLIED BY The Surveying Company Limited, REF "243082-TP-01.DWG" DATED 29/02/2024.
- EXISTING CONTOUR DERIVED FROM 20240301 UAV DATA, REF "HBRC Omaha Filtered.las".
- FOR THE FULL EXTENT OF THE HAWKES BAY REGIONAL COUNCIL OIC AREA REFER TO DRAWING 1017353.2402-TT-010.

LEGEND

- PROPERTY BOUNDARY
- 30 EXISTING MAJOR CONTOUR (5m INTERVAL)
- EXISTING MINOR CONTOUR (1m INTERVAL)
- HAWKES BAY REGIONAL COUNCIL OIC BOUNDARY



DESIGNED	JWY	Feb.25	DRAWING STATUS	CLIENT REVIEW		
DRAWN	ALPO	Feb.25	PROJECT PHASE	PRELIMINARY DESIGN		
DESIGN CHECKED	JWY	06.08.25	NOT FOR CONSTRUCTION			
DRAWING CHECKED	WYHU	06.08.25	THIS DRAWING IS NOT TO BE USED FOR CONSTRUCTION PURPOSES UNLESS SIGNED AS APPROVED			
REV	DESCRIPTION	CAD	CHK	DATE	APPROVED	DATE
1	PRELIMINARY DESIGN	ALPO	TIBR	18.03.25		
2	PRELIMINARY DESIGN ISSUE	ALPO	JWY	24.07.25		
3	PRELIMINARY DESIGN ISSUE OIC AND LAND DATA	ALPO	JWY	06.08.25		

CLIENT HAWKES BAY REGIONAL COUNCIL

PROJECT OHITI ROAD FLOOD PROTECTION STOPBANK WORKS

TITLE PLAN
 TAIHAPE ROAD AND STOPBANK - CUT AND FILL

SCALE (A1) 1:1000 DWG No. 1017353.2402-TT-022 REV 2