

HBRC ARCHAEOLOGICAL SCREENING: PŌRANGAHAU STOP-BANK: HAWKE'S BAY

LEGISLATION

Under the current legislation (HNZPTA 2014) all archaeology is protected. This includes both recorded archaeology (that which we know is present) and unrecorded archaeology (that which remains to be formally identified).

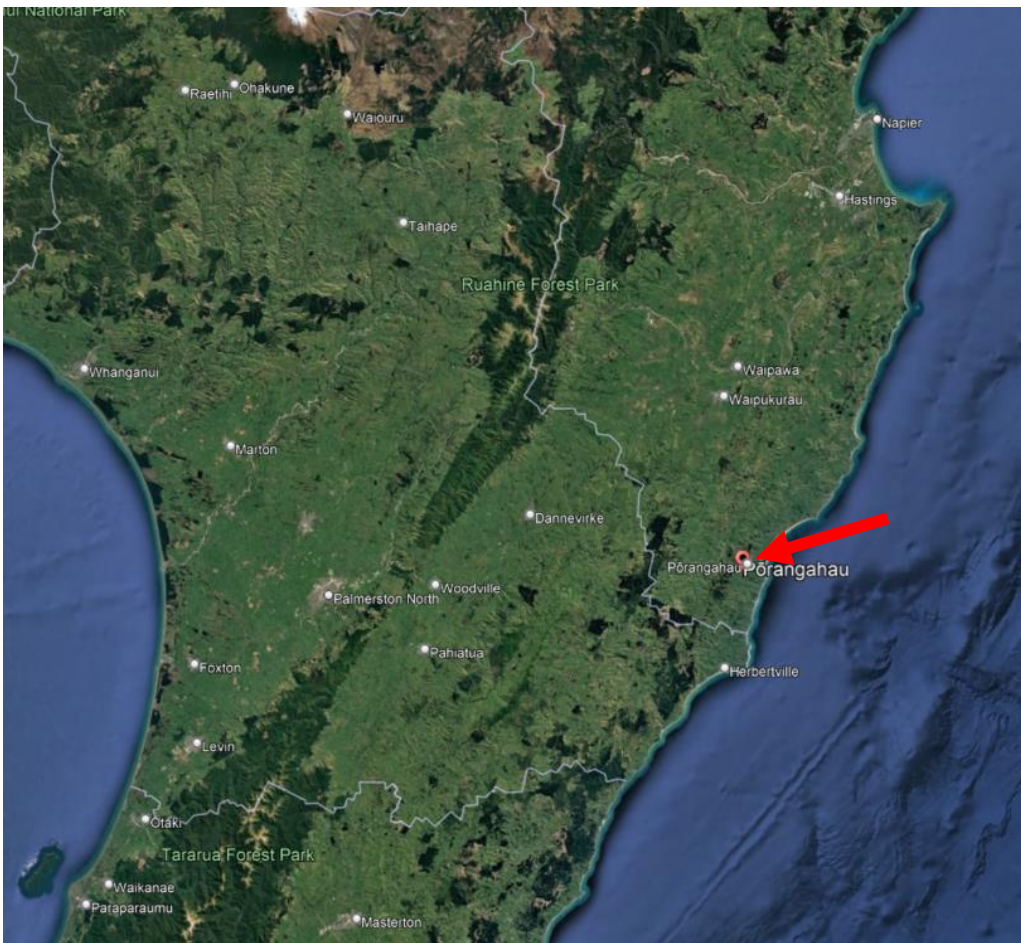
PRIMARY SCREENING

BACKGROUND

An archaeological risk screening of proposed work to approximately 2 km of river corridor and sections of the Porangahau River Stop-bank, Hawke's Bay has been requested from Archaeology Hawke's Bay Ltd (AHB) by JP Neethling for Hawke's Bay Regional Council (HBRC).

LOCATION

This screening relates to sections of river corridor, approximately 2 km, that run from approximately Pah Rd to the Pōrangahau Wastewater Treatment Plant, Pōrangahau, Hawke's Bay.

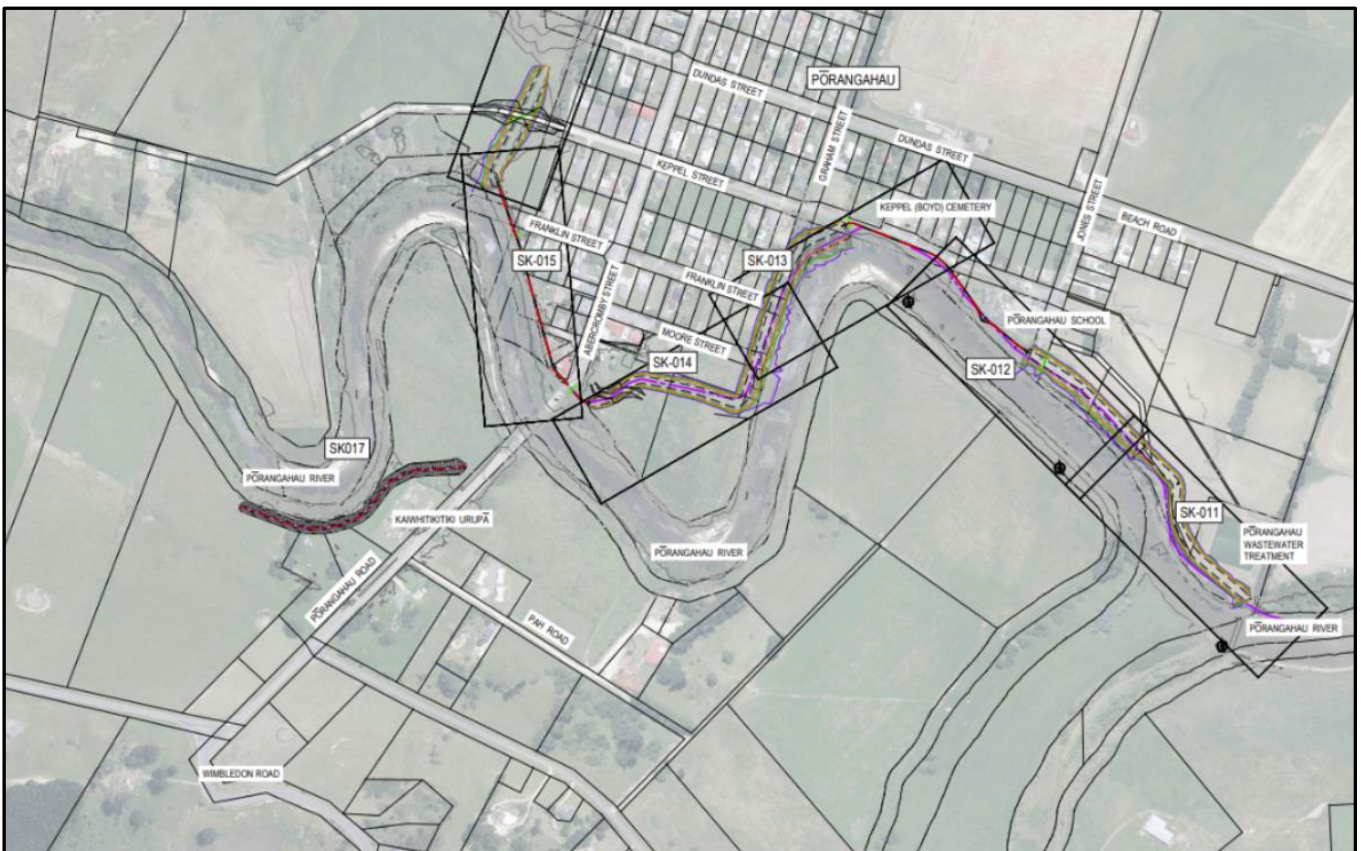


Location of Pōrangahau Stop-banks within wider context (GoogleEarthPro 2024).

The proposed work involves stop-bank repair / replacement and other works such as retaining walls along a circa 2 km section of the Pōrangahau River, Pōrangahau township. The extent of work for the stop-bank sections is expected to require a footprint corridor 30 m wide by > 500 mm deep, subject to engineering advice. The retaining wall sections will require footprint corridors of 5 m wide x 500 – 1000 mm deep subject to engineering advice.

It is assumed that there will be a broader activity corridor associated with these works to allow machinery access, construction material storage and other associated activities.

There may be further works in the detailed plan, but it is expected that such work will be encompassed within either a stop bank or retaining wall corridor activity.



Areas of proposed stop-bank work (Image provided by HBRC).

ARCHAEOLOGICAL POTENTIAL

ARCHSITE

There are no currently recorded archaeological sites within the immediate area of proposed work.

However, there are seven recorded sites within 1 km, including one within circa 50 m.

These recorded sites are:

V24/103 – pits

V24/101 – Pā

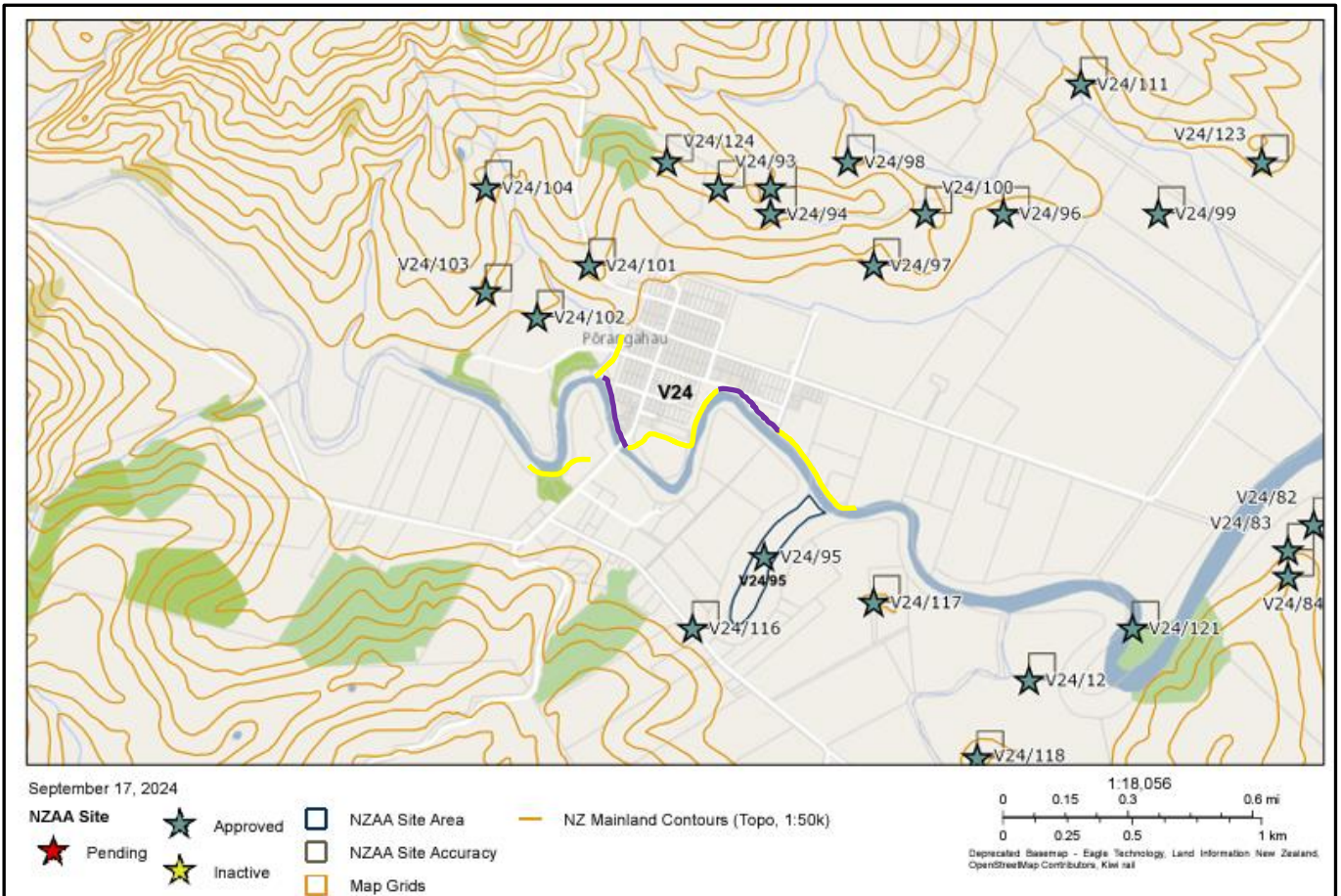
V24/102 – Ditches

V24/104 - Pits

V24/116 – Pits / terraces

V24/95 – Te Awakari a Tamanui Pā

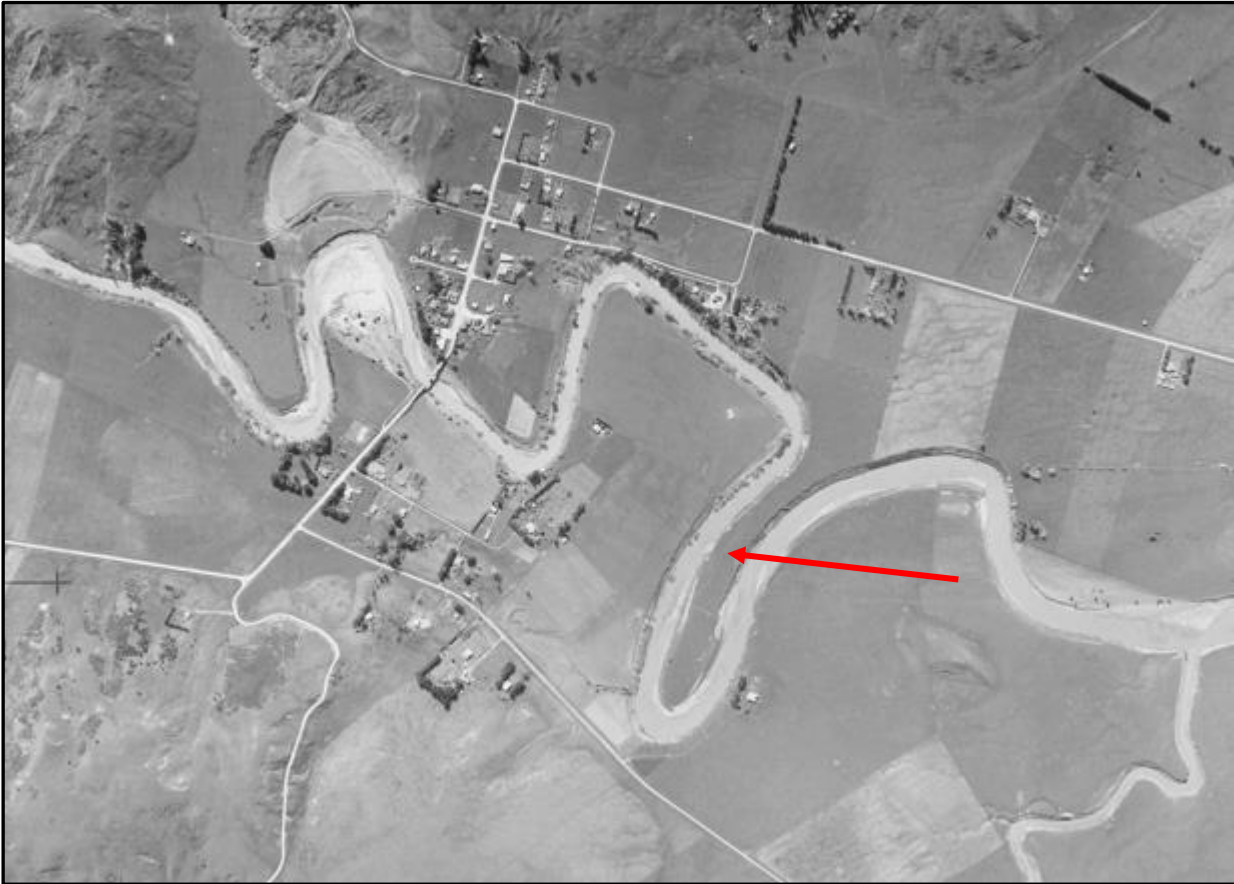
V24/117 - Pits



Archsite excerpt showing recorded archaeological sites in the vicinity of the proposed work: stop-bank sections = yellow lines, other work = purple lines.

HISTORIC AERIAL IMAGES

Several historic aerial images dating from the 1940s to 1990s were scanned for information relating to the recent history of modifications to the river alignment and for potential unrecorded archaeological sites that might be affected by the proposed work. Images from 1944 show the original river channel, particularly in relation to V24/95. Images from 1978 show the recently completed diversion of the river at this location. Evidence of earthwork structures – including medium and large pits, and a bank associated with V24/95 can be seen in the 1944 image, and many are still visible in the 1978 image. No other potential archaeological features were noted in the proposed work areas, although in places these are obscured by vegetation and only a cursory screening of a limited number of images was undertaken.



Retrolens aerial image excerpt dated 1944 showing the pre-modification river alignment in the vicinity of V24/95 (arrowed), noting the pā covers the entire area bounded by the river channel.



Retrolens aerial image excerpt dated 1978 showing the modified river alignment in the vicinity of V24/95 (arrowed), noting the pā covers the entire area bounded by the river channel.

DISTRICT PLANS & RĀRANGI KŌRERO

The area of proposed work lies within the Central Hawke's Bay District Council area. Of serious concern is that none of the recorded sites identified in ArchSite, including the extensive V24/95 could be found on either the Pōrangahau area map (Planning Map 19¹) nor in the Operative District Plan Appendices². Recorded site V24/95 is listed with HNZPT Rārangi Kōrero as #7725 'Te Pā o Pōrangahau' (17/09/2024).

¹ <chrome-extension://efaidnbmnnnibpcajpcglclefindmkaj/https://www.chbdc.govt.nz/assets/Document-Library/Plans/District-Plans/DistrictPlan2003PlanningMaps13-24.pdf>

² <chrome-extension://efaidnbmnnnibpcajpcglclefindmkaj/https://www.chbdc.govt.nz/assets/Uploads/DistrictPlan2003.pdf>

Although there are no currently recorded archaeological sites in the immediate area of the stop-bank, there is significant archaeological potential in the wider area. Recorded site V24/95 is an extensive pā site that in terms of associated activities likely extended to the northeast. The current river channel has created a modern and artificial boundary between the pā site and its wider environs. The immediate landscape is dominated by pā, pit, pit / terrace, midden and ditch site types. These classes of sites, along with the river corridor and fertile river plains, and immediately accessible coastline suggest a resource rich, highly prized and densely occupied landscape.

It should be noted that it has been shown on the Heretaunga Plains that past flooding has in some cases deposited a significant overburden of silts that obscure features from surface expression such as the Whakatū and Puketapu areas. Although not shown to be the case for the Pōrangahau River corridor to date it should be considered as a possibility in this area too.

The number and proximity of recorded archaeological sites, especially the proximity of V24/95 indicates a potentially high archaeological risk – noting that the 1970s diversion would have caused significant modification / destruction in the immediate corridor area. Therefore, it is recommended that a full Assessment of Effects be undertaken to assess the wider archaeological risks of the project with a view to requiring an Archaeological Authority for all or part of the proposed work.

DISCLAIMER

It should be noted that even where the archaeological risk posed by this project is ultimately determined as low, this does not guarantee that archaeological features or materials will not be encountered.

Any such features or materials encountered are protected under the HNZPTA 2014 and if encountered are required to be reported and dealt with appropriately. This could result in significant delays to the work program. Therefore, HBRC are recommended to consider the completing an Archaeological Authority application process prior to works commencing as a risk management measure.

It is recommended that the individual potential Applicants / Authority Holders are briefed on this process PRIOR to commissioning any Assessment of Effects and Authority Application.

An Archaeology Hawke's Bay Ltd information sheet can be provided at the appropriate juncture, or alternatively the HNZPT website can be consulted for further information:

<http://www.heritage.org.nz/>.