

3rd December 2019



NOTIFICATION OF AERIAL SURVEY

Areas to be surveyed:

- **Survey Block Overview – MAP 1**
- **Heretaunga Block, River Valley, Offshore Lines – MAP 2**
- **Poukawa Block, Ruataniwha Block – MAP 3**

Dates:

- 17th January 2020 – 1st March 2020

Details:

During the above dates and at the attached locations Heli A1 Limited will be completing an Airborne Geophysics Survey using our Airbus AS350B3 Helicopter. This survey requires us to fly at approximately 45 knots and between 100-500 feet above the ground whilst carrying an electromagnetic system.

During the survey we will be following flight lines set 200 meters apart – some of these flight lines are up to 40 kilometres in total distance.

Aircraft Details:

Aircraft Make/Model: Airbus AS350B3
Registration: ZK-IUU
Operator: Heli A1 Limited
Notes: Aircraft will be operating on local aviation frequency, if contact is required with the pilot call Heli A1 base (07) 873 6695

If you have any questions, please call our office on (07) 873 6695

1891 Otorohanga Road
RD 4

OTOROHANGA 3974

Ph: (07) 873 6695

Fax: (07) 873 6691

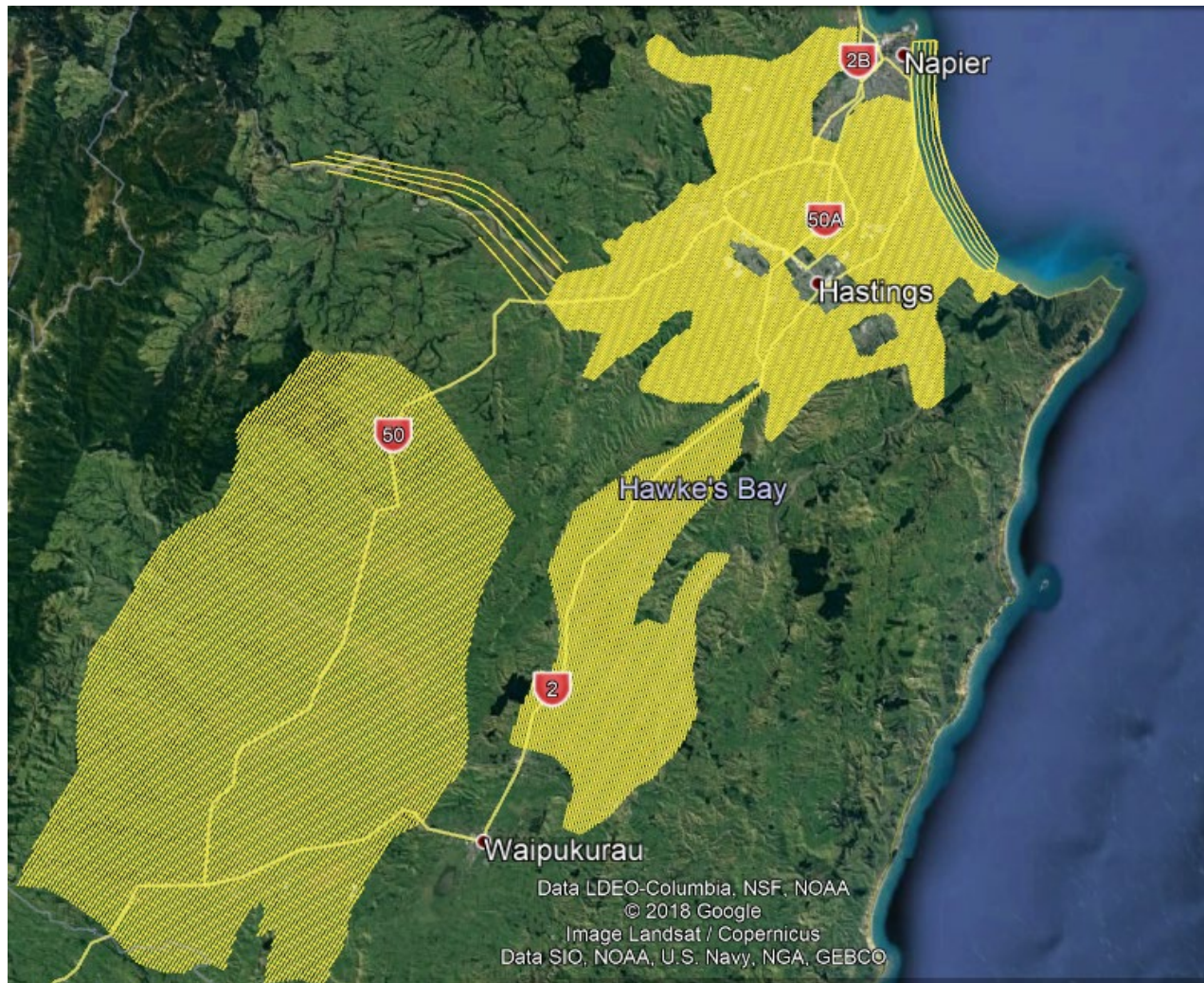
Email: info@helia1.co.nz

Website: www.helia1.co.nz

MAPS BELOW



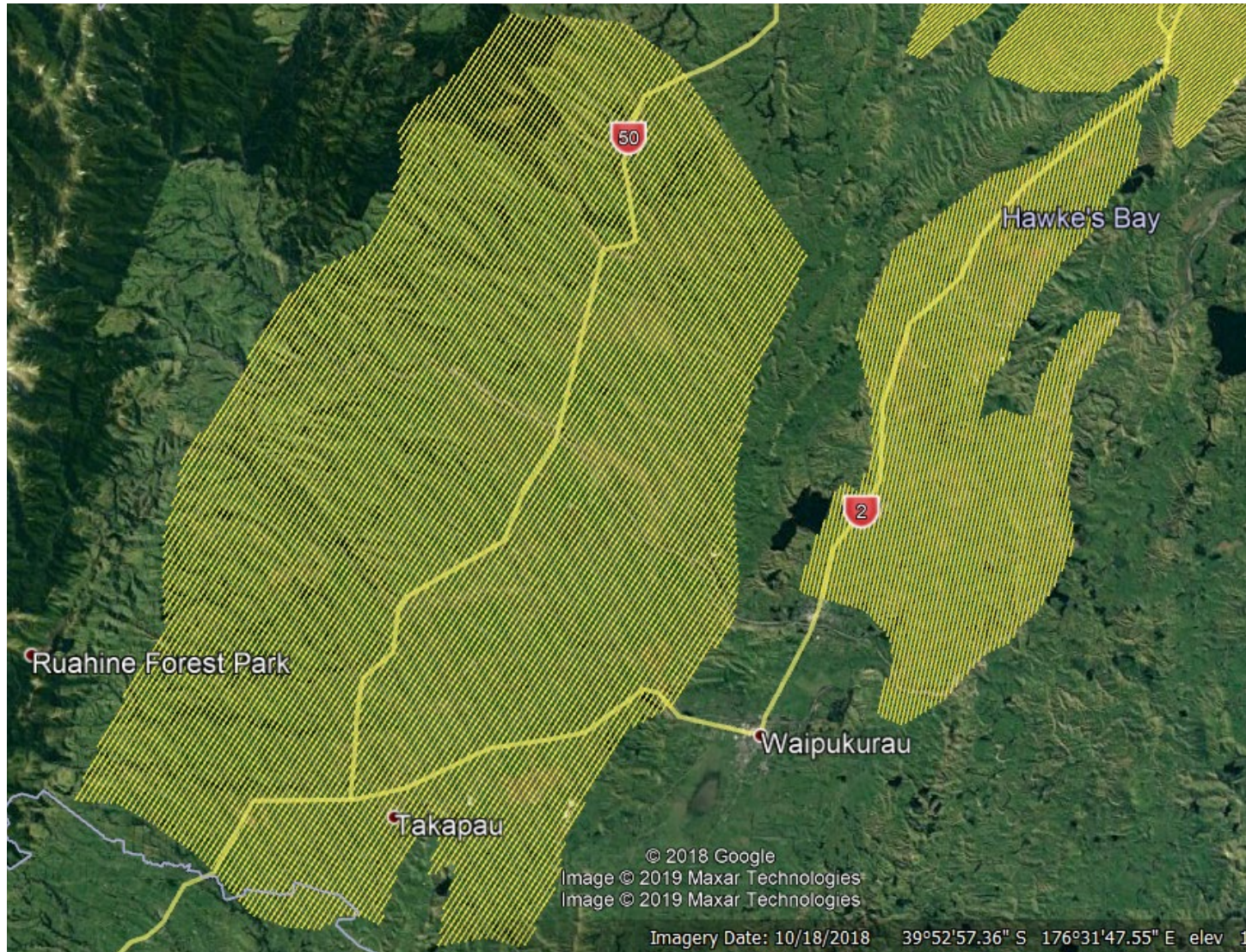
MAP 1 – OVERVIEW



MAP 2 – Heretaunga Block, River Valley, Offshore Lines



MAP 3 – Ruataniwha Bock, Poukawa Block



Photos

