

Lake Poukawa and Pekapeka Swamp

Summary of Values

For Proposed Plan Change 7: Hawke's Bay Regional
Resource Management Plan

(Outstanding Water Bodies Plan Change)

Lake Poukawa and Pekapeka Swamp - Summary of Values

For Proposed Plan Change 7: Hawke's Bay Regional Resource Management Plan (Outstanding Water Bodies Plan Change)

HBRC Publication Number: 5485

Author:
Belinda Harper, Senior Planner

Reviewed by:
Gavin Ide, Principal Advisor Strategic Planning



Contents

Purpose of Report 4

Plan Change 7 Overview 4

Phase One & Phase Two: High Level Review & Summary of Values 5

Phase Three: Refine List & Secondary Assessments 5

Phase Four: Engagement & Local Expert Panel Process 5

Phase Five: Final Evaluation 6

APPENDICES

Appendix 1 Tables C1 and R2 -Lake Poukawa and Pekapeka Swamp

Appendix 2 Expert Panel Findings - Lake Poukawa and Pekapeka Swamp

Appendix 3 Final Evaluation - Lake Poukawa and Pekapeka Swamp

Purpose of Report

1. This report is a compilation of information previously documented on the values associated with Lake Poukawa and Pekapeka Swamp during preparation of Proposed Plan Change 7 prior to its notification on 31 August 2019. It is one of a series of similar reports compiled for each of the respective proposed outstanding water bodies (OWB) identified in Plan Change 7.
2. The approach used by Hawke's Bay Regional Council to identify OWB in Hawke's Bay followed a process that began with a high level review documenting the values associated with 130 water bodies across the region. A short explanation is provided at the beginning of each section which discusses the relevant phase and whether Lake Poukawa and Pekapeka Swamp were considered during that part of the process.
3. Not all OWB identified in Proposed Plan Change 7 were considered during each phase of the process. For clarity, an index table (Table 1) has been included in this report which sets out the relevant phases report names, values and page numbers for Lake Poukawa and Pekapeka Swamp.
4. No new research or further information was commissioned for the purposes of compiling this report.
5. For further information on the Outstanding Water Body Identification Methodology and each of these phases, see the Plan Change 7 Section 32 Evaluation Report¹.
6. **Table 1: Lake Poukawa and Pekapeka Swamp index**

Phase	Included (yes/no)	Report name /date	Page numbers in associated report
High Level Review (Phase 1 & Phase 2)	Yes	Summary of Cultural Values Associated with Water Bodies in Hawke's Bay (March 2018)	8
		Summary of the Recreation, Landscape and Ecology Values Associated with Water Bodies in Hawke's Bay (March 2018)	11
Secondary Assessments (Phase 3)	No	N/A	N/A
Local Expert Panel (Phase 4)	Yes	Outstanding Water Bodies in Hawke's Bay - Report of the Expert Panel (April 2019)	56, 57
Final Evaluation (Phase 5)	Yes	Outstanding Water Bodies Plan Change - selecting a list of outstanding water bodies in Hawke's Bay (May 2019)	19, 25, 32, 34, 40, 41, 59, 63, 92, 107

Plan Change 7 Overview

7. Hawke's Bay Regional Council has prepared an amendment to the Hawke's Bay Regional Resource Management Plan (RRMP) to include a list of the region's outstanding water bodies, together with a framework which prescribes a high level of protection for these water bodies in future plan making. That change to the RRMP is referred to as 'Proposed Plan Change 7' or the 'Outstanding Water Bodies Plan Change.'
8. The water bodies identified in the Outstanding Water Bodies Plan Change have been proposed as the 'best of the best' within the region, featuring an exceptional cultural, spiritual, recreation, natural character, landscape, geology, or ecology value which is remarkable in Hawke's Bay.
9. Since commencing this OWB plan change project in early 2017, a significant amount of work has been undertaken to build a clearer picture of water bodies within the region and their potential for being classed as outstanding.
10. The Outstanding Water Bodies Plan Change amends the RPS to reflect NPSFM provisions which require the protection of the significant values of outstanding water bodies. This special protection does not lessen the importance of, or value associated with other water bodies, which are managed through other parts of the Regional Resource Management Plan or Council work programme.
11. Further information about the background and purpose of proposed Plan Change 7 is online at www.hbrc.govt.nz (search #owb).

¹ <https://www.hbrc.govt.nz/assets/Document-Library/Outstanding-Water-Bodies/1.-Other-supporting-information/Section-32-Evaluation-Report.pdf>

Phase One & Phase Two: High Level Review & Summary of Values

12. In June 2017, the Council embarked on a high level review documenting the cultural, spiritual, recreation, landscape, geological, natural character and ecology values associated with 130 water bodies across the region.
13. Phase 1 involved a thorough review of over ninety documents being completed. Those documents included Deeds of Treaty Settlements, statutory acknowledgements for Treaty settlements, customary uses reports, Waitangi Tribunal reports, and other documents produced in a national and regional context between 1979 and 2018.
14. This work built a clear picture of values associated with a wide range of water bodies across the region and their potential for being classified as outstanding, prior to short listing. This work culminated in a literature review with the following two tables summarising key values associated with 130 of the region's water bodies:
 - Table C1: Cultural Values Table – Summary of Cultural Values Associated with Water Bodies in Hawke's Bay.
 - Table R2: Recreation, landscape, Ecology Values Table – Summary of the Recreation, Landscape and Ecology Values Associated with Water Bodies in Hawke's Bay
15. Table C1 included all water bodies identified by name in reviewed documents, with a high level summary of the associated 'cultural and spiritual values'. This work was sent out to all Treaty settlement entities in Hawke's Bay in December 2017 for input prior to completion.
16. Table R2 included all water bodies identified by name in reviewed documents, with a high level summary of the associated recreation, landscape, geology and ecology values, and ratings assigned in this document.
17. Appendix 1 sets out the relevant extracts from Tables C1 and R2 for Lake Poukawa and Pekapeka Swamp.

Phase Three: Refine List & Secondary Assessments

18. In 2018, the high level review findings for 130 water bodies, and their associated values, were reported to the Council's Regional Planning Committee (RPC). The RPC selected a list of 22 candidate OWB to proceed forward a more detailed secondary assessment to see if any contained values that were clearly superior to other water bodies in Hawke's Bay.
19. Lake Poukawa and Pekapeka Swamp were not selected as a candidate OWB as such, a secondary assessment was not carried out for this water body.

Phase Four: Engagement & Local Expert Panel Process

20. Phase 4 involved wider input from the public, iwi authorities, key stakeholders and territorial local authorities. Feedback from this process featured requests for an additional 20 water bodies to be identified as OWB.
21. In December 2018, Council staff contracted a local expert panel to evaluate, categorise and identify outstanding characteristics, for all value sets, from the list of 22 candidate OWB and the additional 20 water bodies put forward during engagement.
22. The local expert panel was appointed via nominations by key stakeholders, iwi authorities and city and district councils, and comprised six members² with good knowledge of the Hawke's Bay region.
23. The recommendations made by the panel were based on existing information, their local knowledge, and a set of assessment criteria they developed at their first meeting. The assessment criteria used by the panel to identify outstanding features is set out at the beginning of each subsection for each value set.
24. The expert panel found Lake Poukawa and Pekapeka Swamp to have outstanding ecology, landscape and cultural and spiritual. Their findings are set out in Appendix 2.

² Morry Black (Mauri Protection Agency), Matt Brady (DOC), John Cheyne (Te Taiao Environment), Andrew Curtis (Water Strategies Limited), Bernie Kelly (kayaking rep), Tom Winlove (Fish & Game Hawke's Bay)

Phase Five: Final Evaluation

25. Phase Five saw a final evaluation carried out to assist the Council's Regional Planning Committee to select a list of outstanding water bodies in Hawke's Bay, for inclusion in Proposed Plan Change 7.
26. This work summarised the key values of 42 water bodies nominated during Phases 3 and 4, and informed by
 - The secondary assessments
 - local expert panel findings
 - the values summary reports, and
 - stakeholder engagement.
27. The summary was presented by value-type, based on the work to date and in a format consistent with the direction given by Council.
28. Appendix 3 sets out the relevant extracts from the final evaluation for Lake Poukawa and Pekapeka Swamp.

Appendix 1: Tables C1 and R2 - Lake Poukawa and Pekapeka Swamp

Note: Appendix 1 contains extracts only - for further information please refer to the full reports.



Summary of cultural values associated with water bodies in Hawke's Bay

HBRC Report No. SD18-01
Plan Number 4978

Strategic Development Group

ISSN 2324-4186 (PRINT)
ISSN 2324-4194 (ONLINE)



Summary of cultural values associated with water bodies in Hawke's Bay

HBRC Report No. SD18-01
Plan Number 4978

14 March 2018

Prepared By:
Belinda Harper, Senior Planner

Referencing

When referencing in another report any of the values contained in this document, the author of that report must include the following text as a footnote to the referenced material:

"There are numerous water bodies in the Hawke's Bay region where two or more iwi groups have agreed, shared interests and/or contested overlapping claims. By referring to these values it is not intended to imply any exclusive rights over a particular water body for one or more iwi group, nor does it confirm the validity of the claims of any group(s) over that water body. This information is being referred to solely for the purpose of identifying the important cultural and spiritual values identified by iwi groups in the region".

Strategic Development Group

ISSN 2324-4186 (PRINT)
ISSN 2324-4194 (ONLINE)

© Copyright: Hawke's Bay Regional Council

Waterbody / Region / Catchment	Treaty settlement entity	Commentary		Key values
		<p>Key DOS = Deed of settlements, SA = statutory acknowledgements, TSL = Treaty settlement legislation, CUR = customary usage reports, WTR = Waitangi tribunal reports, OTHER = any other relevant documents</p> <p>No = waterbody not referred in document N/A = No such document exists.</p> <div style="border: 1px solid black; padding: 5px; margin: 10px 0;"> <p>NOTE: The 'Key Values' column sets out a pool of eight key values which broadly reflect the most significant cultural values associated with water bodies. The relevant key values for each water body is listed in this column.</p> <p>See commentary column for further explanation about the identified key value for each waterbody.</p> </div>		<p>Note: key values as follows:</p> <ul style="list-style-type: none"> - Wāhi Tapu, Wāhi taonga - Wai Tapu - Acknowledged in korero tuku iho, pepeha, whakatauki, waiata - Mahinga kai, Pa tuna - Pa, kāinga - Tauranga waka - Rohe Boundary - Battle site
Lake Poukawa Hawke's Bay Karamu TANK	Heretaunga Tamatea	DOS	Prior to draining, Lake Poukawa was a large area of lake and raupo wetland covering between 3,000 and 4,000 acres depending on seasonal water levels. Lake Poukawa lies at the heart of the spiritual and cultural wellbeing and identity and culture of Heretaunga Tamatea. It was an important food source, particularly known for eels.	Wāhi Tapu, Wāhi taonga Pa, kāinga Mahinga kai, Pa tuna Battle site
		SA	N/A	
		TSL	N/A	
		CUS		
		WTR OTHER	A List of rivers and lakes deserving inclusions in as Schedule of Protected Waters (1986) Group two: A traditional Maori settlement Area.	
		OTHER	Outstanding Natural Landscapes - A Māori cultural review (2012) Kaokaoroa Range, Raukawa Range, Lake Poukawa area is recognised as an outstanding natural feature and landscape. This area is very significant to Māori of Hawkes Bay. Within the bounds of the surrounding ranges of Raukawa on the west and Kaokaoroa in the east, are a multitude of significant sites. The lakes Poukawa, Roto a Tara, Roto a Kiwa were significant food gathering areas and sites of significant battles. Tikiwhata and Wekanui Pā sites are located on the Kaokaoroa range. Wekanui is said to be the burial place of Te Pareihe. Te Wheao Pā is located behind Kahuranaki Marae and was the place where Rangikoianake's sons were trained in leadership and chieftainship before being married out to different parts of Heretaunga/ Tamatea.	

Summary of recreation, landscape and ecology values associated with water bodies in Hawke's Bay

HBRC Report No. SD18-02
Plan Number 4979

Strategic Development Group

ISSN 2324-4186 (PRINT)
ISSN 2324-4194 (ONLINE)



Summary of recreation, landscape and ecology values associated with water bodies in Hawke's Bay

HBRC Report No. SD18-02
Plan Number 4979


14 March 2018

Prepared By:
Belinda Harper, Senior Planner

Strategic Development Group

ISSN 2324-4186 (PRINT)
ISSN 2324-4194 (ONLINE)

© Copyright: Hawke's Bay Regional Council
12



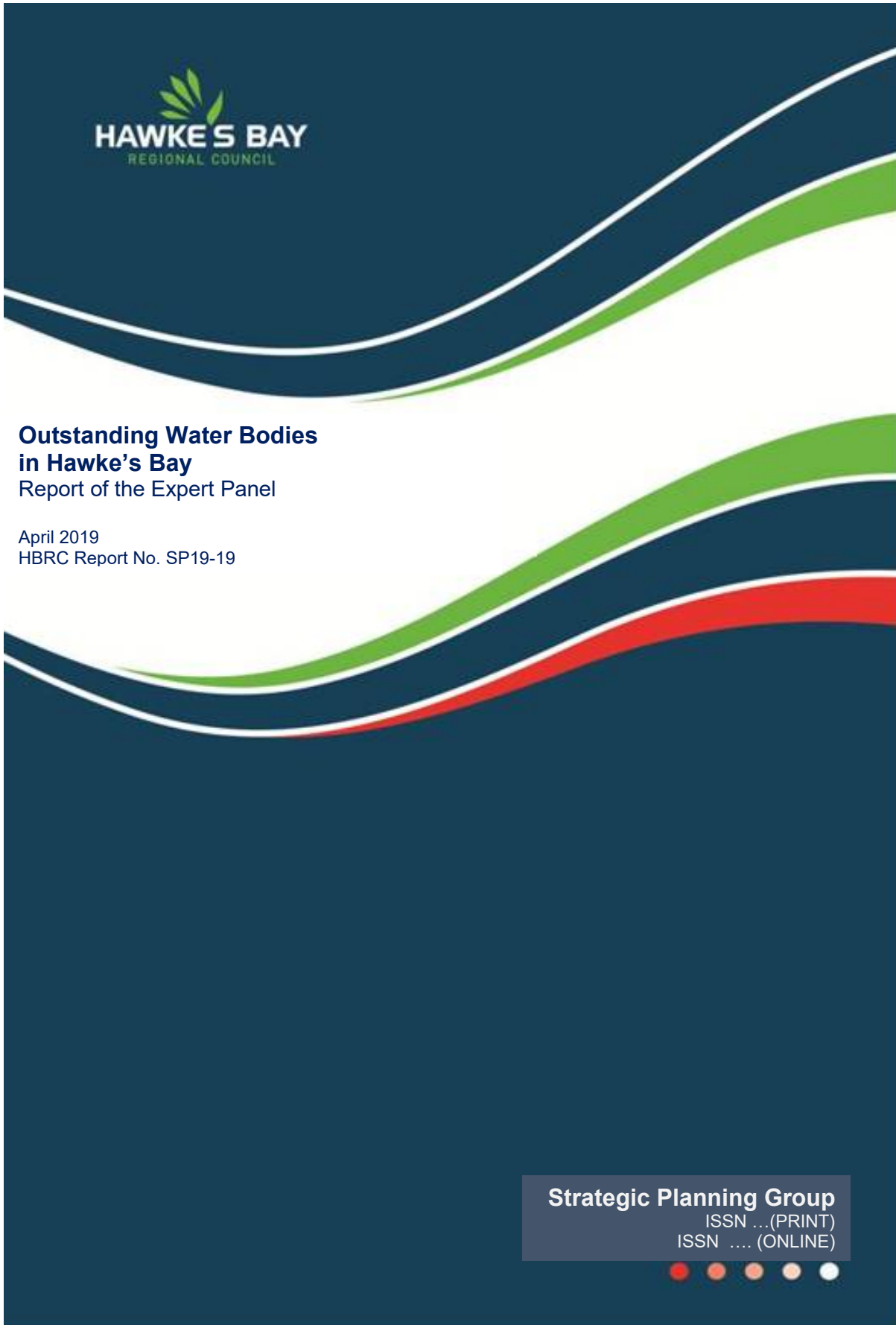
Waterbody / Region / Catchment	Treaty settlement entity group(s) with linkages back to waterbody	Commentary		Key values
		<p>Key 64NZR = 64 New Zealand Rivers – A Scenic Evaluation RRS = New Zealand Recreational River Survey MAF & F = Submission on the Draft Inventory of Wild and Scenic Rivers of National Importance by MAFF W&SR = National Inventory of Wild and Scenic Rivers RiVAS = River Values Assessment System LOR & L = A List of Rivers and Lakes Deserving Inclusion in a Schedule of Protected Waters HTF = Headwater Trout Fisheries in New Zealand WONI = Potential Waterbodies of National Importance RAMSAR = Wetlands in NZ which meet the Ramsar criteria W&WH = Wildlife and Wildlife Habitat of Hawke's Bay Rivers</p>		
Lake Poukawa Hawke's Bay Karamu TANK	Heretaunga Tamatea	64NZR	N/A	Geological feature Ecology (native fisheries)
		RRS	N/A	
		MAF&F	No	
		W&SR	N/A	
		LOR&L	Group two: - A traditional Maori settlement Area - Scientific research value	
		HTF	No	
		WONI	Potential water body of national importance for water dependent geodiversity and geothermal features (geodiversity and geothermal features) Is a Holocene swamp	
		RAMSAR	No	
		W&WH	N/A	
		RIVAS	N/A	
OTHER	Wetlands of National Importance to Fisheries, MAF Fish 1987 Category A (outstanding) Lake Poukawa is a large (195 ha) shallow lake, fringed with raupo, and supports a traditional Maori eel fishery. It is also an important area for waterfowl. The Hawke's Bay Catchment Board is currently preparing a water management plan for the Swamp, and lake levels have been set for Lake Poukawa. Peka Peka Swamp (the only large Swamp remaining in Hawke's Bay) it is maintained by Poukawa Stream. The outflow from Lake Poukawa, and can dry up during droughts. Peka Peka Swamp gives access to Lake Poukawa for short- and long-finned eels, and provides a rearing area for inanga. The area met the following Criteria: Criteria 7. A remnant or regionally representative wetland with significant fisheries values. Criteria 8. A nationally important non-salmonid fishery, including commercial and traditional Maori fisheries. Criteria 10. A wetland which is particularly important as a water retention or riparian buffer zone for fisheries in the catchment.			
OTHER	Geo preservation inventory Lake Poukawa Fault. Sequence of peat and Holocene tephra under Lake Poukawa with bisecting fault that moved during the 1931 earthquake. Constant rate of vertical faulting of 0.2 mmy (W side up) and return period of faulting of 800-900 years. Classification: Regionally significant.			
OTHER	Areas of Significant Conservation Values: HB Coastal Marine Area (Draft), 2006 (areas are identified in RCEP as 'SCA')			

Pekapeka Swamp Hawke's Bay Ngaruroro TANK	64NZR	N/A	Ecology (native fisheries) Recreation
	RRS	N/A	
	MAF&F	N/A	
	W&SR	N/A	
	LOR&L	N/A	
	HTF	No	
	WONI	Potential waterbody of national importance for recreation	
	RAMSAR	No	
	W&WH	N/A	
	RIVAS	No	
OTHER	Wetlands of National Importance to Fisheries, MAF Fish 1987 Category A (outstanding) Peka Peka Swamp (50 ha) is the only large Swamp remaining in Hawke's Bay. The wetland is maintained by Poukawa Stream, the outflow from Lake Poukawa, and can dry up during droughts. It gives access to Lake Poukawa for short- and long-finned eels, and provides a rearing area for inanga. The area met the following Criteria: Criteria 7. A remnant or regionally representative wetland with significant fisheries values. Criteria 8. A nationally important non-salmonid fishery, including commercial and traditional Maori fisheries. Criteria 10. A wetland which is particularly important as a water retention or riparian buffer zone for fisheries in the catchment.		
OTHER	Geo preservation inventory Poukawa Stream tilted cut off meander. Mid Otiran meander of the old Poukawa drainage system that became entrenched and cutoff by uplift of the NW limb of the Kaokaoroa Anticline. Classification: Regionally significant		

Appendix 2: Expert Panel Findings - Lake Poukawa and Pekapeka Swamp

Note: Appendix 2 contains extracts only - for further information please refer to the full report of the expert panel.

Outstanding Water Bodies in Hawke's Bay: Report of the Expert Panel



April 2019



159 Dalton Street . Napier 4110
Private Bag 6006 Napier 4142
Telephone (06) 835 9200
Fax (06) 835 3601
Regional Freephone (06) 0800 108 838

Outstanding Water Bodies in Hawke's Bay Report of the Expert Panel

April 2019
HBRC Report No. SP19-19



Prepared by:

Morry Black, Mauri Protection Agency
Matthew Brady, Department of Conservation
John Cheyne, Wetland Works
Andrew Curtis, Water Strategies Ltd
Bernie Kelly, Hawke's Bay Canoe Club
Tom Winlove, Hawke's Bay Fish and Game Council

For Strategic Planning Group
Hawke's Bay Regional Council

ISSN ... (PRINT)
ISSN (ONLINE)



Outcome 2: OWB Assessment Criteria

The Panel considered the criteria for what makes the selected values regionally ‘Outstanding’. The Gisborne District Council OWB criteria provided a useful framework but needed both simplification and some additional criteria.

Both quantitative and qualitative (descriptive) measures were selected and are set out below in Table 4. ‘Outstanding’ values could also be variable, for example, customary values can be dependent on the season or time of year.

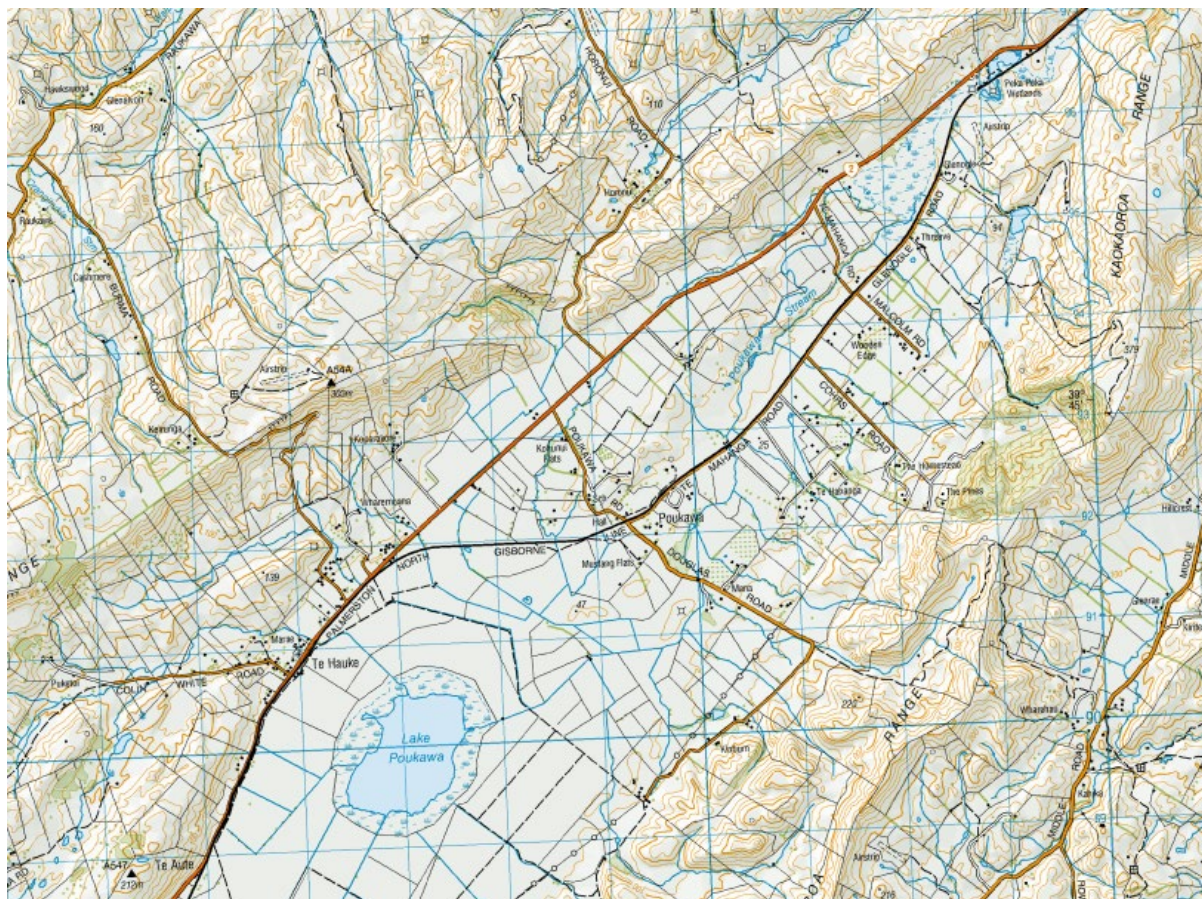
TABLE 4: CRITERIA FOR ASSESSING ‘OUTSTANDING’ VALUES

‘OUTSTANDING’ VALUE	CRITERIA	INDICATOR
Ecology	Threatened Species	4 or more threatened species
	% of Population	<ul style="list-style-type: none"> • >2% of a national population of a native species • >15% of a regional population of a native species
	Ecological Distinctiveness	Presence of a unique or distinctive characteristic/ habitat or species at the regional level
	Ecological Function	Presence of a critical or outstanding: <ul style="list-style-type: none"> • Breeding site • Ecosystem component • Assemblage • Kohanga ika/ nursery • Fish passage/ fish spawning
Landscape	A water body that contains a unique hydrological, geological or culturally significant feature A water body that is widely recognised at the regional level for its scenic values	
Natural Character	A water body that is highly natural with little or no human modification, including to the flow, bed and riparian margins, water quality, flora and fauna, within a largely indigenous landscape	
Amenity/ Recreation	A recreational experience that is exceptional in or on the water An exceptional location for angling or customary food gathering A unique historical or heritage site	
Cultural & Spiritual	Preliminary and high level comments only are provided using the following framework: For understanding and assessing the outstanding values, attributes and uses of water bodies from a cultural and spiritual perspective, the following concepts have been applied:	

	<p><i>Wairuatanga</i></p> <ul style="list-style-type: none"> Mauri Mana Tapu Taonga tuku iho <p><i>Rangatiratanga</i></p> <ul style="list-style-type: none"> Mana whenua – mana moana Kaitiakitanga Mahinga kai (as a place, action or practice) <p><i>Whakapapa</i></p> <ul style="list-style-type: none"> O te whenua O te wai O te tangata Ki uta ki tai <p><i>Matauranga Maori</i></p> <ul style="list-style-type: none"> Tikanga Maori knowledge systems Traditional uses and values Origins of cultural knowledge <p><i>Cultural Natural Character</i></p> <ul style="list-style-type: none"> Spiritual condition Mana o te wai Connectivity between ground and surface water Cleansing properties as water passes through the whenua Spring / aquifer sources – water recharge systems <p>SPECIAL NOTE:</p> <p>Tangata whenua will provide locally relevant assessments through separate input to the process (Refer to Appendix 4: Maori cultural and spiritual values, and see Diagram 1).</p>
--	---

Lake Poukawa & Pekapeka Swamp





LAKE POUKAWA & PEKAPEKA SWAMP: DESCRIPTION OF OUTSTANDING VALUES

SUMMARY

TYPE	NAME	OUTSTANDING VALUE				
		ECOLOGY	LANDSCAPE	NATURAL CHARACTER	AMENITY & RECREATION	CULTURAL & SPIRITUAL
Wetland	LAKE POUKAWA & PEKAPEKA SWAMP					

ECOLOGY

Description	Notes	Reference
<p><i>Threatened Species:</i></p> <p>6 bird species – grey duck, white heron, bittern, black-billed gull, banded dotterel, Caspian tern</p>		Bird list in Appendix 2

Outstanding Water Bodies in Hawke's Bay: Report of the Expert Panel

<p><i>% of Population:</i></p> <p>Bittern – 16% of regional population</p> <p>Dabchick – 27% of regional population 5-10% of national population</p> <p>Pied stilt – 50% of regional population</p> <p>Shoveler duck – 3% of national population</p>		<p>Bird list in Appendix 2</p> <p>Cheyne J 2019</p>
<p><i>Ecological Function:</i></p> <p>High connectivity between Lake Poukawa & Pekapeka Swamp and Karamu Stream for native fish migration and bird movement</p> <p>Supports high number of bird species that breed on ephemeral wetlands associated with Lake Poukawa</p> <p>Supports a large shortfin eel population</p> <p>Fish passage</p>		<p>WONI Cat A 1987</p> <p>NIWA 2009</p>

LANDSCAPE

Description	Notes	Reference
Lake Poukawa Holocene Swamp (nationally significant)	Lake Poukawa	NZ Geopres. Inventory

CULTURAL & SPIRITUAL

Description	Notes	Reference
<p><i>Wairuatanga:</i></p> <p>Mauri, Mana, Tapu, Taonga tuku iho (fish passage & recruitment)</p> <p><i>Rangatiratanga;</i></p> <p>Mana Whenua - Mana Moana, Kaitiakitanga, <i>Mahinga kai:</i> (place/action/practice) (fish passage & recruitment)</p> <p><i>Whakapapa:</i></p> <p>o te whenua, o te wai, o te tangata, unique peatlands (life force and soul energy)</p>		<p>WAI 262; J. G. Wilson, 1976; Heretaunga Ararau Haukunui (Te Hira Huata)</p>
<p><i>Spiritual condition:</i></p> <p>Connectivity, cleansing properties, spring source – recharge zones</p>		<p>BOI 2013</p>

Appendix 3: Final Evaluation - Lake Poukawa and Pekapeka Swamp

Note: Appendix 3 contains extracts only - for further information please refer to the full report.



Outstanding Water Bodies Plan Change Selecting a list of outstanding water bodies in Hawke's Bay

HBRC Report Number: SD19-18
Publication Number: 5400

Outstanding Water Bodies Plan Change

Selecting a list of outstanding water bodies in Hawke's Bay

HBRC Report Number: SD19-18
Publication Number: 5400



Prepared by:

Belinda Harper, Senior Planner

Dale Meredith, Senior Planner

Reviewed by:

Ceri Edmonds: Policy and Planning

Dale Meredith: Senior Planner

Tom Skerman: Group Manager Strategic Planning

Ecology values

Wildlife

Lake Poukawa is a large (195 ha) shallow lake, fringed with raupo. It is currently in a degraded state and suffers from frequent algae blooms which impact on its water quality and wildlife habitats.

There is high connectivity between Lake Poukawa, Pekapeka Swamp and Karamu Stream for native bird movement, with the area supporting 31 bird species, including the Australasian bittern, black billed gull, banded dotterel, Caspian tern, New Zealand dabchick, and pied stilt.

Notably high numbers of the Australasian bittern, New Zealand dabchick and pied stilt are located at the site, with around 18%, 27% and 50% of the regional population located in this area, respectively. The area also a significant flocking site for shoveler ducks, supporting high numbers of game birds.

The New Zealand dabchick is classified as 'near threatened' on the ICUN red list, and 'recovering' on the NZTCS The pied stilt is not threatened, and the Australasian bittern is classified as 'nationally critical'.

The local expert panel found Lake Poukawa and Pekapeka Swamp have outstanding wildlife values and outstanding ecological function, specifically noting the high populations of Australasian Bittern, New Zealand dab chick, pied stilt and shoveler duck and the number threatened species present. The local expert panel's report is attached in Appendix 6.

Native fish

Lake Poukawa is a large (195 ha) shallow lake, which supports a traditional Maori eel fishery. The area supports a large shortfin eel population and is important for fish passage.

Pekapeka Swamp is the only large swamp remaining in Hawke's Bay, and is maintained by the outflow from Lake Poukawa (Poukawa Stream). Poukawa Stream can dry up during droughts, and it currently has a LakeSPI rating of 0% and suffers from algae blooms at certain times of the year.

There is high connectivity between Lake Poukawa, Pekapeka Swamp and Karamū Stream for native fish migration, with Pekapeka Swamp providing access to Lake Poukawa for eels, and a rearing area for inanga.

In 1987, Lake Poukawa and Pekapeka Swamp were assigned a Category A (outstanding) rating by MAFFish, in their publication "wetlands of national importance to fisheries", for the following reasons:

- A remnant or regionally representative wetland with significant fisheries values.
- A nationally important non-salmonid fishery, including commercial and traditional Maori fisheries.
- A wetland which is particularly important as a water retention or riparian buffer zone for fisheries in the catchment.

The local expert panel found Lake Poukawa and Pekapeka Swamp to have an outstanding ecological function, specifically noting their importance for fish migration and large population of shortfin eels. The local expert panel's report is attached in Appendix 6.

Native plants

Historically, Lake Poukawa contained large beds of aquatic plants, with dense beds of native charophytes recorded in the lake in 1984.

In 2017, NIWA found Lake Poukawa to be in a degraded state with no submerged plants.

The local expert panel's report does not discuss the native plant values associated with Lake Poukawa and Pekapeka Swamp. Appendix 6 sets out the full findings of the local expert panel.

Landscape / geological features

Lake Poukawa is a large shallow lake, fringed with raupo and surrounded by farmland.

Lake Poukawa became a well-known paleontological site in 1956. Historically, Lake Poukawa had a species rich Pleistocene/Holocene waterfowl fauna, with more than 13,400 anatid bones (including a number of extinct bird fossils) unearthed at this site.

In 1986, Lake Poukawa was placed in 'Group Two' in the Governments list of rivers and lakes deserving protection for its scientific research value.

In 2004, the Ministry for the Environment identified Lake Poukawa as a potential water body of national importance for water dependent geodiversity and geothermal features, specifically as a Holocene swamp.

The Lake Poukawa Holocene Swamp is identified on the Geopreservation Inventory as being Class B (nationally important), along with 32 other features in Hawke's Bay.

The local expert panel found Lake Poukawa to have outstanding landscape values, specifically noting its value as a holocene swamp. Appendix 6 sets out the full findings of the local expert panel.

Cultural and Spiritual values

Lake Poukawa is important to Heretaunga Tamatea, lying at the heart of their spiritual and cultural wellbeing.

Prior to draining, Lake Poukawa was a large lake and raupo wetland covering between 3,000 and 4,000 acres, depending on seasonal waters.

The lake was an important food source, and was particularly known for tuna (eels). There were a number of significant battles in the vicinity.

Information reviewed indicates the water body contains the following key values:

- Wāhi Tapu, Wāhi taonga
- Battle site
- Pa, kāinga
- Mahinga kai, Pa tuna.

The local expert panel found that Lake Poukawa and Pekapeka Swamp included known outstanding cultural and spiritual values, specifically for wairuatanga, rangatiratanga, mahinga kai, whakapapa, and spiritual condition.

At the time of writing, iwi authorities had not provided any comment specific to the Putere Lakes.