

# Ngamatea East Swamp

## Summary of Values

For Proposed Plan Change 7: Hawke's Bay Regional  
Resource Management Plan

(Outstanding Water Bodies Plan Change)

## **Ngamatea East Swamp - Summary of Values**

**For Proposed Plan Change 7: Hawke's Bay Regional Resource Management Plan  
(Outstanding Water Bodies Plan Change)**

HBRC Publication Number: 5496

Author:  
Belinda Harper, Senior Planner

Reviewed by:  
Gavin Ide, Principal Advisor Strategic Planning

# Contents

<b>Purpose of Report</b> .....	4
<b>Plan Change 7 Overview</b> .....	4
<b>Phase One &amp; Phase Two: High Level Review &amp; Summary of Values</b> .....	5
<b>Phase Three: Refine List &amp; Secondary Assessments</b> .....	5
<b>Phase Four: Engagement &amp; Local Expert Panel Process</b> .....	5
<b>Phase Five: Final Evaluation</b> .....	6

# APPENDICES

- Appendix 1      Expert Panel Findings - Ngamatea East Swamp
- Appendix 2      Final Evaluation - Ngamatea East Swamp

## Purpose of Report

1. This report is a compilation of information previously documented on the values associated with the Ngamatea East Swamp during preparation of Proposed Plan Change 7 prior to its notification on 31 August 2019. It is one of a series of similar reports compiled for each of the respective proposed outstanding water bodies (OWB) identified in Plan Change 7.
2. The approach used by Hawke's Bay Regional Council to identify OWB in Hawke's Bay followed a process that began with a high level review documenting the values associated with 130 water bodies across the region. A short explanation is provided at the beginning of each section which discusses the relevant phase and whether the Ngamatea East Swamp was considered during that part of the process.
3. Not all OWB identified in Proposed Plan Change 7 were considered during each phase of the process. For clarity, an index table (Table 1) has been included in this report which sets out the relevant phases, report names, values and page numbers for the Ngamatea East Swamp.
4. No new research or further information was commissioned for purposes of compiling this report.
5. For further information on the Outstanding Water Body Identification Methodology and each of these phases, see the Plan Change 7 Section 32 Evaluation Report<sup>1</sup>.
6. **Table 1: Ngamatea East Swamp index**

Phase	Included (yes/no)	Report name /date	Page numbers in associated report
High Level Review (Phase 1 & Phase 2)	No	Summary of Cultural Values Associated with Water Bodies in Hawke's Bay (March 2018)	N/A
		Summary of the Recreation, Landscape and Ecology Values Associated with Water Bodies in Hawke's Bay (March 2018)	N/A
Secondary Assessments (Phase 3)	No	N/A	N/A
Local Expert Panel (Phase 4)	Yes	Outstanding Water Bodies in Hawke's Bay - Report of the Expert Panel (April 2019)	65 - 66
Final Evaluation (Phase 5)	Yes	Outstanding Water Bodies Plan Change - selecting a list of outstanding water bodies in Hawke's Bay (May 2019)	20, 24, 40, 41, 50, 52, 94, 101

## Plan Change 7 Overview

7. Hawke's Bay Regional Council has prepared an amendment to the Hawke's Bay Regional Resource Management Plan (RRMP) to include a list of the region's outstanding water bodies, together with a framework which prescribes a high level of protection for these water bodies in future plan making. That change to the RRMP is referred to as 'Proposed Plan Change 7' or the 'Outstanding Water Bodies Plan Change.'
8. The water bodies identified in the Outstanding Water Bodies Plan Change have been proposed as the 'best of the best' within the region, featuring an exceptional cultural, spiritual, recreation, natural character, landscape, geology, or ecology value which is remarkable in Hawke's Bay.
9. Since commencing this OWB plan change project in early 2017, a significant amount of work has been undertaken to build a clearer picture of water bodies within the region and their potential for being classed as outstanding.
10. The Outstanding Water Bodies Plan Change amends the RPS to reflect NPSFM provisions which require the protection of the significant values of outstanding water bodies. This special protection does not lessen the importance of, or value associated with other water bodies, which are managed through other parts of the Regional Resource Management Plan or Council work programme.
11. Further information about the background and purpose of proposed Plan Change 7 is online at [www.hbrc.govt.nz](http://www.hbrc.govt.nz) (search #owb).

<sup>1</sup> <https://www.hbrc.govt.nz/assets/Document-Library/Outstanding-Water-Bodies/1.-Other-supporting-information/Section-32-Evaluation-Report.pdf>

## **Phase One & Phase Two: High Level Review & Summary of Values**

12. In June 2017, the Council embarked on a high level review documenting the cultural, spiritual, recreation, landscape, geological, natural character and ecology values associated with 130 water bodies across the region.
13. Phase 1 involved a thorough review of over ninety documents being completed. Those documents included Deeds of Treaty Settlements, statutory acknowledgements for Treaty settlements, customary uses reports, Waitangi Tribunal reports, and other documents produced in a national and regional context between 1979 and 2018.
14. This work built a clear picture of values associated with a wide range of water bodies across the region and their potential for being classified as outstanding, prior to short listing. This work culminated in a literature review with the following two tables summarising key values associated with 130 of the region's water bodies:
  - Table C1: Cultural Values Table – Summary of Cultural Values Associated with Water Bodies in Hawke's Bay.
  - Table R2: Recreation, landscape, Ecology Values Table – Summary of the Recreation, Landscape and Ecology Values Associated with Water Bodies in Hawke's Bay
15. Table C1 included all water bodies identified by name in reviewed documents, with a high level summary of the associated 'cultural and spiritual values'. This work was sent out to all Treaty settlement entities in Hawke's Bay in December 2017 for input prior to completion.
16. Table R2 included all water bodies identified by name in reviewed documents, with a high level summary of the associated recreation, landscape, geology and ecology values, and ratings assigned in this document.
17. No information regarding the Ngamatea East Swamp was found during the high level review. As such, the Ngamatea East Swamp does not feature in Tables C1 or R2.

## **Phase Three: Refine List & Secondary Assessments**

18. In 2018, the high level review findings for 130 water bodies, and their associated values, were reported to the Council's Regional Planning Committee (RPC). The RPC selected a list of 22 candidate OWB to proceed forward a more detailed secondary assessment to see if any contained values that were clearly superior to other water bodies in Hawke's Bay.
19. The Ngamatea East Swamp was not selected as a candidate OWB as such, a secondary assessment was not carried out for this water body.

## **Phase Four: Engagement & Local Expert Panel Process**

20. Phase 4 involved wider input from the public, iwi authorities, key stakeholders and territorial local authorities. Feedback from this process featured requests for an additional 20 water bodies to be identified as OWB.
21. In December 2018, Council staff contracted a local expert panel to evaluate, categorise and identify outstanding characteristics, for all value sets, from the list of 22 candidate OWB and the additional 20 water bodies put forward during engagement.
22. The local expert panel was appointed via nominations by key stakeholders, iwi authorities and city and district councils, and comprised six members<sup>2</sup> with good knowledge of the Hawke's Bay region.
23. The recommendations made by the panel were based on existing information, their local knowledge, and a set of assessment criteria they developed at their first meeting. The assessment criteria used by the panel to identify outstanding features is set out at the beginning of each subsection for each value set.
24. The expert panel found The Ngamatea East Swamp to have outstanding ecology and natural character values. Their findings are set out in Appendix 1.

---

<sup>2</sup> Morry Black (Mauri Protection Agency), Matt Brady (DOC), John Cheyne (Te Taiao Environment), Andrew Curtis (Water Strategies Limited), Bernie Kelly (kayaking rep), Tom Winlove (Fish & Game Hawke's Bay)

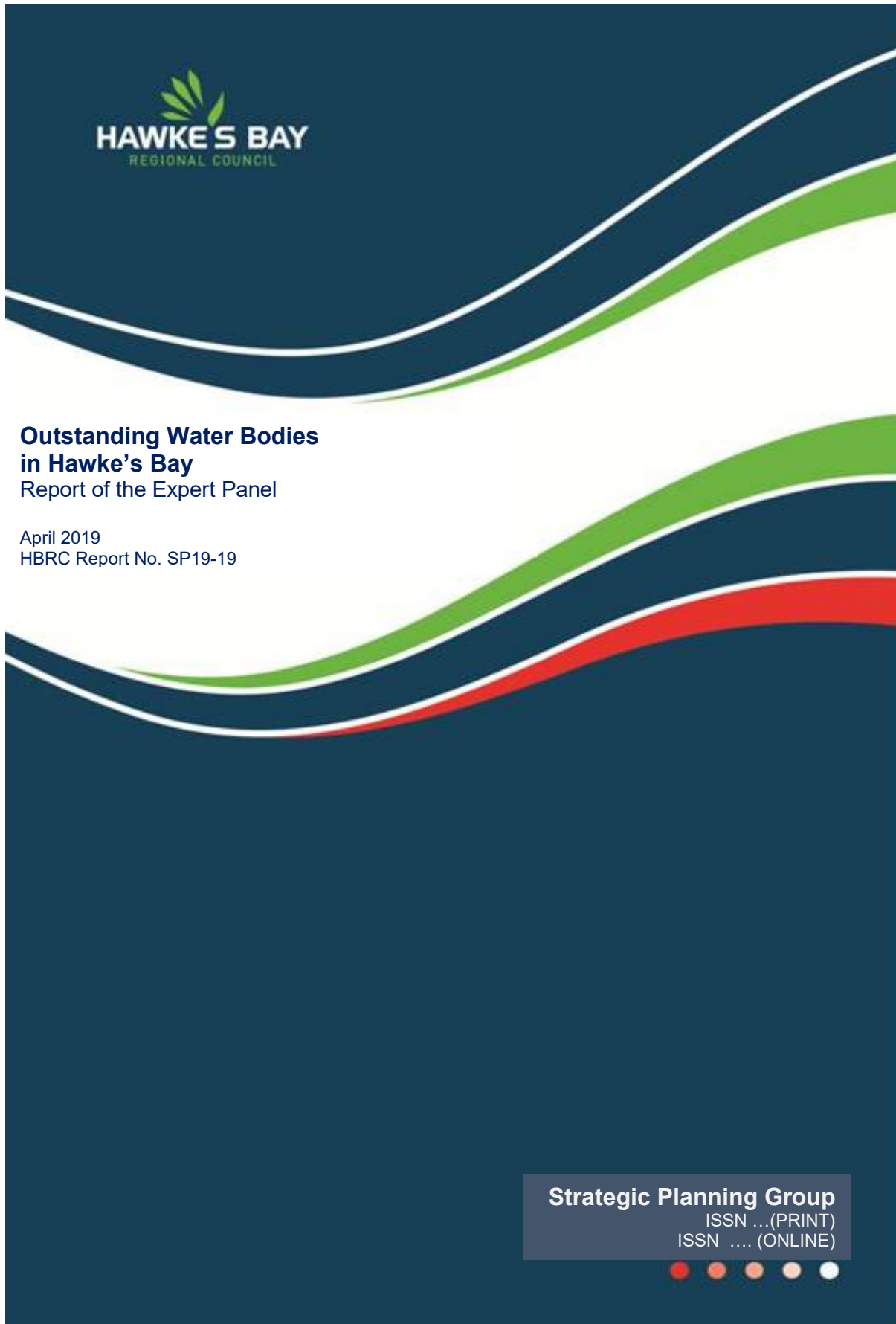
## **Phase Five: Final Evaluation**

25. Phase Five saw a final evaluation carried out to assist the Council's Regional Planning Committee to select a list of outstanding water bodies in Hawke's Bay, for inclusion in Proposed Plan Change 7.
26. This work summarised the key values of 42 water bodies nominated during Phases 3 and 4, and informed by
  - The secondary assessments
  - local expert panel findings
  - the values summary reports, and
  - stakeholder engagement.
27. The summary was presented by value-type, based on the work to date and in a format consistent with the direction given by Council.
28. Appendix 2 sets out the relevant extracts from the final evaluation for the Ngamatea East Swamp.

# Appendix 1: Expert Panel Findings - Ngamatea East Swamp

*Note: Appendix 1 contains extracts only - for further information please refer to the full report of the expert panel.*

Outstanding Water Bodies in Hawke's Bay: Report of the Expert Panel





159 Dalton Street . Napier 4110  
Private Bag 6006 Napier 4142  
Telephone (06) 835 9200  
Fax (06) 835 3601  
Regional Freephone (06) 0800 108 838

## **Outstanding Water Bodies in Hawke's Bay** Report of the Expert Panel

April 2019  
HBRC Report No. SP19-19



Prepared by:

Morry Black, Mauri Protection Agency  
Matthew Brady, Department of Conservation  
John Cheyne, Wetland Works  
Andrew Curtis, Water Strategies Ltd  
Bernie Kelly, Hawke's Bay Canoe Club  
Tom Winlove, Hawke's Bay Fish and Game Council

For Strategic Planning Group  
Hawke's Bay Regional Council

ISSN ... (PRINT)  
ISSN .... (ONLINE)





## Outcome 2: OWB Assessment Criteria

The Panel considered the criteria for what makes the selected values regionally ‘Outstanding’. The Gisborne District Council OWB criteria provided a useful framework but needed both simplification and some additional criteria.

Both quantitative and qualitative (descriptive) measures were selected and are set out below in Table 4. ‘Outstanding’ values could also be variable, for example, customary values can be dependent on the season or time of year.

TABLE 4: CRITERIA FOR ASSESSING ‘OUTSTANDING’ VALUES

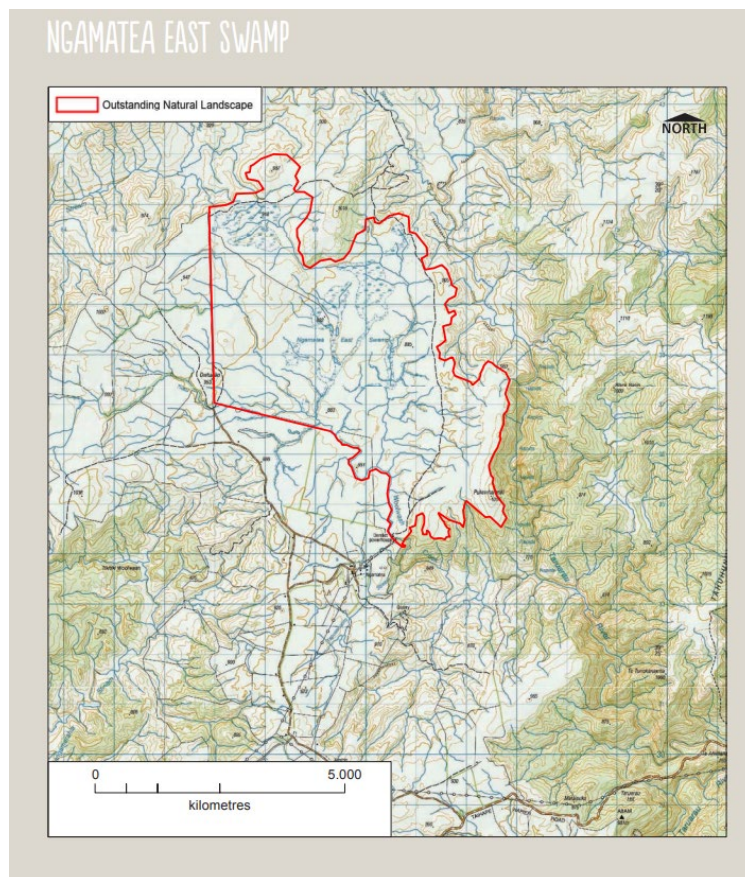
‘OUTSTANDING’ VALUE	CRITERIA	INDICATOR
Ecology	Threatened Species	4 or more threatened species
	% of Population	<ul style="list-style-type: none"> <li>• &gt;2% of a national population of a native species</li> <li>• &gt;15% of a regional population of a native species</li> </ul>
	Ecological Distinctiveness	Presence of a unique or distinctive characteristic/ habitat or species at the regional level
	Ecological Function	Presence of a critical or outstanding: <ul style="list-style-type: none"> <li>• Breeding site</li> <li>• Ecosystem component</li> <li>• Assemblage</li> <li>• Kohanga ika/ nursery</li> <li>• Fish passage/ fish spawning</li> </ul>
Landscape	A water body that contains a unique hydrological, geological or culturally significant feature  A water body that is widely recognised at the regional level for its scenic values	
Natural Character	A water body that is highly natural with little or no human modification, including to the flow, bed and riparian margins, water quality, flora and fauna, within a largely indigenous landscape	
Amenity/ Recreation	A recreational experience that is exceptional in or on the water An exceptional location for angling or customary food gathering A unique historical or heritage site	
Cultural & Spiritual	Preliminary and high level comments only are provided using the following framework:  For understanding and assessing the outstanding values, attributes and uses of water bodies from a cultural and spiritual perspective, the following concepts have been applied:	

	<p><i>Wairuatanga</i></p> <ul style="list-style-type: none"> <li>Mauri</li> <li>Mana</li> <li>Tapu</li> <li>Taonga tuku iho</li> </ul> <p><i>Rangatiratanga</i></p> <ul style="list-style-type: none"> <li>Mana whenua – mana moana</li> <li>Kaitiakitanga</li> <li>Mahinga kai (as a place, action or practice)</li> </ul> <p><i>Whakapapa</i></p> <ul style="list-style-type: none"> <li>O te whenua</li> <li>O te wai</li> <li>O te tangata</li> <li>Ki uta ki tai</li> </ul> <p><i>Matauranga Maori</i></p> <ul style="list-style-type: none"> <li>Tikanga Maori knowledge systems</li> <li>Traditional uses and values</li> <li>Origins of cultural knowledge</li> </ul> <p><i>Cultural Natural Character</i></p> <ul style="list-style-type: none"> <li>Spiritual condition</li> <li>Mana o te wai</li> <li>Connectivity between ground and surface water</li> <li>Cleansing properties as water passes through the whenua</li> <li>Spring / aquifer sources – water recharge systems</li> </ul> <p><b>SPECIAL NOTE:</b></p> <p>Tangata whenua will provide locally relevant assessments through separate input to the process (Refer to Appendix 4: Maori cultural and spiritual values, and see Diagram 1).</p>
--	-------------------------------------------------------------------------------------------------------------------------------------------------------------------------------------------------------------------------------------------------------------------------------------------------------------------------------------------------------------------------------------------------------------------------------------------------------------------------------------------------------------------------------------------------------------------------------------------------------------------------------------------------------------------------------------------------------------------------------------------------------------------------------------------------------------------------------------------------------------------------------------------------------------------------------------------------------------------------------------------------------------------------------------------------------------------------------------------------------------------------------------------------------------------------------------------------------------------------

# Ngamatea East Swamp



Ngamatea East Swamp: aerial view



Source: Rangitikei District Plan

## NGAMATEA EAST SWAMP: DESCRIPTION OF OUTSTANDING VALUES

### SUMMARY

TYPE	NAME	OUTSTANDING VALUE				
		ECOLOGY	LANDSCAPE	NATURAL CHARACTER	AMENITY & RECREATION	CULTURAL & SPIRITUAL
Wetland	NGAMATEA EAST SWAMP					

### ECOLOGY

Description	Notes	Reference
<p><i>Threatened Species:</i></p> <p>2 bird species – grey duck, banded dotterel</p> <p>2 plant species – <i>carex strictissima</i>, <i>ranunculus recens var</i></p>		DOC Protected Natural Area report
<p><i>Ecological Distinctiveness:</i></p> <p>Significant expanse of native vegetation</p>		DOC PNA Report

### NATURAL CHARACTER

Description	Notes	Reference
Very high in natural character as a result of its significant ecological value, expansive open landscape, expressive wetland drainage and vegetation patterns. Highly valued by Māori.		Rangitikei District Plan

# Appendix 2: Final Evaluation - Ngamatea East Swamp

*Note: Appendix 2 contains extracts only - for further information please refer to the full report.*



## Outstanding Water Bodies Plan Change Selecting a list of outstanding water bodies in Hawke's Bay

HBRC Report Number: SD19-18  
Publication Number: 5400

## Outstanding Water Bodies Plan Change

### Selecting a list of outstanding water bodies in Hawke's Bay

HBRC Report Number: SD19-18  
Publication Number: 5400



Prepared by:

**Belinda Harper, Senior Planner**

**Dale Meredith, Senior Planner**

Reviewed by:

**Ceri Edmonds: Policy and Planning**

**Dale Meredith: Senior Planner**

**Tom Skerman: Group Manager Strategic Planning**



## Ecology values

### Wildlife

The Banded dotterel and the black shag inhabit the Ngamatea East Swamp.

The local expert panel also noted the grey duck as being present at the Ngamatea East Swamp however due to insufficient information staff are not recommending grey duck be taken into account in the RPC's final assessment

The local expert panel found the Ngamatea East Swamp to have outstanding wildlife values, specifically noting the presence of the grey duck and banded dotterel at the site.

### Native plants

The Ngamatea East Swamp is a very large intact wetland area, of around 300 hectares, which contains at least fifteen indigenous threatened plant species, including the sedge *carex strictissima* which is nationally endangered and the *ranunculus recens var*, which is 'at risk' and threatened.

The local expert panel found the Ngamatea East Swamp to have outstanding ecological function, noting the significant expanse of vegetation.

## Natural character

The Ngamatea East Swamp is a very large intact wetland area, of around 300 hectares, which contains a high number of threatened plant species.

The local expert panel found the Ngamatea East Swamp to have outstanding natural character, noting its ecological values, expansive open landscape and expressive wetland drainage and vegetation patterns. Appendix 6 sets out the full findings of the local expert panel.

## Cultural and Spiritual values

The Rangitikei District Plan identifies the Ngamatea East Swamp as being an Outstanding Natural Area, highly valued by Māori for the cleansing provided by the water catchment, storage and drainage processes, and as a possible food source. Spiritual essence derives from being a headwater system to the Rangitikei River.

Information reviewed indicates the water body contains the following key values:

- Mahinga kai

The local expert panel found the Ngamatea East Swamp to have no known outstanding cultural and spiritual values.

Iwi authorities did not provide any comment specific to Ngamatea East Swamp.