

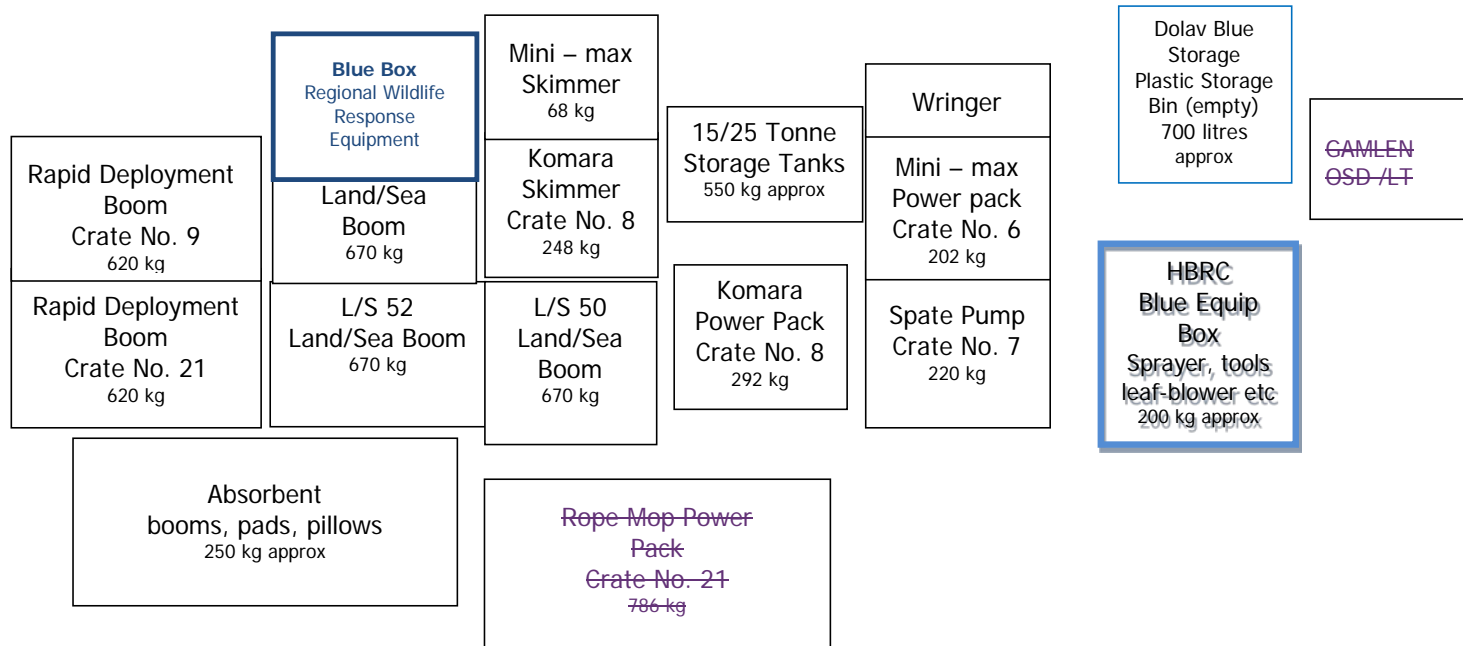
## ANNEX 1 EQUIPMENT, RESOURCES & LOCATIONS

<b>STORAGE PLAN</b> .....	<b>1</b>
<b>1. OVERVIEW</b> .....	<b>3</b>
<b>2. EQUIPMENT &amp; RESOURCES</b> .....	<b>3</b>
<b>2.1 MOBILISING EQUIPMENT</b> .....	<b>3</b>
2.1.1 Hawke's Bay.....	3
2.1.2 Outside of Hawke's Bay.....	4
2.1.3 Demobilisation.....	4
<b>2.2 MARITIME NEW ZEALAND EQUIPMENT</b> .....	<b>4</b>
2.2.1 Oil Spill Equipment.....	4
2.2.2 Wildlife Response Equipment.....	4
<b>2.3 LOCALLY BASED EQUIPMENT &amp; RESOURCES</b> .....	<b>5</b>
2.3.1 Equipment.....	5
2.3.2 Resources.....	9
2.3.2.1 Helicopters and Aircraft.....	9
2.3.2.2 Tugs, Launches and Boats.....	11
2.3.2.3 Sample Labs.....	12
2.3.2.4 Waste Disposal.....	12
<b>3. LOCATIONS</b> .....	<b>13</b>
<b>3.1 EMERGENCY OPERATIONS CENTRE &amp; EQUIPMENT</b> .....	<b>13</b>
<b>3.2 TEMPORARY STORAGE FOR OIL WASTE</b> .....	<b>15</b>
<b>3.3 REGIONAL AIRSTRIPS</b> .....	<b>16</b>
<b>3.4 TEMPORARY HOLDING CENTRES (THC) &amp; TEMPORARY REHABILITATION CENTRES (TRC) AVAILABLE</b> .....	<b>17</b>
3.4.1 Napier / Hastings Area.....	17
3.4.2 Northern Hawke's Bay.....	18
3.4.3 Southern Hawke's Bay.....	19

## MARITIME NZ MARINE OIL SPILL EQUIPMENT – STORAGE PLAN (Front elevation)

LOCATION: Mooring Loft, Napier Port, Breakwater Road, NAPIER

BACK – against wall next to roller door entrance, right side.



Formatted: Body Text

FRONT

NOTES: CRATE CONTENTS LABEL SHOULD FACE OUTWARDS

CONTACTS: FORKLIFT 06 833 4498  
ROSC 0274 838 754

AUGUST 2017<sup>4</sup>



## 1. OVERVIEW

This Annex outlines oil spill response equipment and resources that are available for use in the event of a Tier 2 spill within Hawke's Bay. It includes

- specialised equipment owned by Maritime New Zealand;
- equipment and resources owned by the Hawke's Bay Regional Council and other organisations which could be made available in an event;
- identified locations that can be used in an event and outlines the resources available at these locations.

## 2. EQUIPMENT & RESOURCES

### 2.1 MOBILISING EQUIPMENT

#### 2.1.1 Hawke's Bay

##### Equipment

Access to equipment in storage areas are controlled by the contact organisation listed in this Annex.

##### Transportation

The equipment may be moved to the spill site by air, by land, by sea, or by any combination, giving consideration to the accessibility of the destination, the time to transport the equipment to its destination, and the means of unloading the equipment. Many items are pre-packed, cumbersome and heavy. Accordingly, equipment may need to be reconfigured for transportation to the ROSC's chosen destination, and the means to load and unload provided.

##### Contracted carrier

The Oil Spill equipment stored in the Mooring Loft Napier Port, Breakwater Road, Napier will transport to a spill site within the Port area by Napier Port forklifts or trucks that are available at the time. The Port Security staff hold a key to the Mooring Loft in the gatehouse that is manned 24 hours; the ROSC's and Duty Manager (Contacts Napier Port Security) have the security code for the Mooring Loft. A forklift can be made available through Napier Port Logistics Planners 06 833 4416 or the Pack Office 06 833 4417 or 06 833 4496, or Port Security.

For spills outside the Port, in the event that a Council truck is not available ask the HBRC Works Group, Guppy Road, Napier (Refer to 2.3 for contact details) to organise a contracted carrier as recommended in this Annex, or a contracted carrier that the Council use for other works. These trucks are not off-road/4WD and may not be able to negotiate small access roads. The Council owns a number of 4WD flat deck utes that may be able to transport the equipment from the truck over the more inaccessible terrain.

When ordering vehicles ensure that:

- HBRC is notified so that access arrangements are confirmed;
- The type of equipment and pick up point is specified;
- The truck is fitted with a "Ringfeder" for full trailers or a 1500kg trailer hitch for the Council's pre-loaded trailers;
- The destination of the equipment is clearly specified, and repeated back by the transport dispatcher;
- The driver is asked to relay his/her time of departure from the store to the destination, and ETA at the destination;
- The driver reports any unforeseen delay en route to scene, and his/her arrival at the destination
- The driver's orders after delivering the equipment is understood.

### 2.1.2 Outside of Hawke's Bay

Equipment from the Marine Pollution Response Service in Auckland or another region may be mobilised in support of a Tier 2 response, subject to approval of the Director Maritime New Zealand. Requests to mobilise equipment should be made through the MNZ Oil Spill Duty Officer using the appropriate Form in Chapter 2.

The majority of MNZ equipment is pre-packaged in numbered boxes with collapsible sides, a pallet type base, and of a size appropriate to the equipment contained. The dimensions and weight of the loaded boxes vary according to equipment type but all are intended to fit road trailers and into commercial aircraft that have been converted to a cargo configuration.

They will not fit into a Boeing 737/Bae 146 in the passenger configuration. Because of the nature of their construction they may be stacked only two high. These boxes are marked to show their general contents and loaded weight, a more detailed list of contents is enclosed within the box.

Equipment will be despatched by the MNZ using the quickest means available. This might be by RNZAF or commercial aircraft, or alternatively by road. The availability of suitable aircraft will dictate delivery times to Hawke's Bay; road transport will take approximately 9 hours.

### 2.1.3 Demobilisation

To clean, repair/service equipment and return to respective areas, check all accessories and miscellaneous contents to appropriate cases contact Hawke's Bay Regional Council Works Group (Catchment Contracts Manager first contact).

## 2.2 MARITIME NEW ZEALAND EQUIPMENT

### 2.2.1 Oil Spill Equipment

MNZ equipment in Hawke's Bay is to be immediately available for re-deployment in an emergency or otherwise in New Zealand or overseas. If requested to do so by the MNZ, the Hawke's Bay Regional Council will assist in the emergency re-deployment of this equipment within New Zealand by advising and/or procuring transport arrangements at MNZ's expense.

Annex 1 of the National Marine Oil Spill Contingency Plan lists items of equipment owned by the Maritime New Zealand that are stored in other regions, and at the Marine Pollution Response Service MPRS (09) 834 3908. If additional equipment is needed in a response, this list should be referred to first, as the items of equipment are compatible with those listed above.

### 2.2.2 Wildlife Response Equipment

#### Regional Wildlife Kits

The Regional Oiled Wildlife Response Kit, contained in a blue crate is stored at the Napier Port Mooring Loft together with other MNZ equipment (Appendix B lists contents). It is a start-up unit for the immediate needs of small numbers of birds in the initial stage of a response and contains enough equipment for 20 field personnel and the collection of 50 birds. Readily available items can be obtained directly from retailers and suppliers for subsequent needs – these items are outlined in Appendix B. Specialist items will be obtained via veterinary and safety suppliers, through the spill response logistics section. Items such as bird enclosures will be fabricated on-site where required.

Additional equipment (including an Oiled Wildlife Response Trailer, contents listed in Appendix B) is held by Massey University, Palmerston North and mobilisation of these additional assets will entail mobilisation of one or more Tier 3 responders to provide specific training on use of the equipment. Contact the Oil Spill Duty Officer (OSDO) 04 473 6369...

## 2.3 LOCALLY BASED EQUIPMENT & RESOURCES

### 2.3.1 Equipment

The following list outlines equipment based in Hawke's Bay.

Equipment	Owner	Location	Contact
<b>Containment Booms</b>			
Land/sea boom 240m (3 crates each containing 4x20 m lengths)	MNZ	Mooring Loft NP	Port Security 833 4440
Rapid Deployment 2x99m (2 crates each containing 33m & 66 m lengths)	MNZ	Mooring Loft NP	
Rapid Deployment Boom 300m	MNZ	Shipping Container No. 4 Wharf NP	
Inflatable 20m x 2	HBRC	Coastguard Container	HBRC Pollution Response 0800108838
<b>Dispersant</b>			
<del>2400 litres Gamlen OSD-LT</del> No dispersants held on site	MNZ	Mooring Loft NP	
<b>Dispersant Application Equipment</b>			
Backpack Sprayer (1)	MNZ	Mooring Loft NP	
Venturi System fixed to mobile trailer	Napier Port	Mooring Loft NP	Port Security 833 4440
P48 Spray Plants (x 7)	HBRC	Guppy Road	845 9210
Mini Comet spray plants (x 3)	HBRC	Guppy Road	
Foam Branches (venturi system) (several)	DOC	Napier	Dave Carlton 834 3111
Monsoon buckets for use with helicopters	DOC	Napier	
Aerial application spray nozzles x 50	MNZ	Harbour Masters Office, Napier	0274 455 592
Dolav Blue Plastic Storage Bin – 700Ltr	MNZ	Mooring Loft	Port Security 833 4440
<b>Sampling Kits (5)</b>			
Dispersant Testing Kit	MNZ	HBRC HBRC Lab Store	

Equipment	Owner	Location	Contact
<b>Temporary Storage</b>			
Frame tanks: 15,000 litre x1 & 25,000 litre x1	MNZ	Mooring Loft NP	Port Security 833 4440
Portable dams (2000 litres) x 2	DOC	Wairoa	Helen Jonas 06 838 8252
<b>Wildlife Kits</b>			
Wildlife kit x 1	MNZ	Mooring Loft NP	Port Security 833 4440
<b>Earthmoving Equipment</b>			
Bulldozers (1), Excavators (2), Tractor with blades (1)	HBRC	Guppy Road	845 9210
Bulldozers, Diggers, Excavators, Scrapers	Tuck Contractors Ltd	Hastings	James Sutton 0274 426 964
Excavation & Cartage	Doug Jamieson Excavators	Napier	Doug Jamieson 0274 459 295
Excavation & Cartage	Frank Burgess Contractors	Napier	06 836 6472 (24hr)
<b>Vacuum Trucks</b>			
10,000 litre x 2	Allens Septic Tank Cleaners	Napier	Stewart Hodges 06 879 9114 (24hr)
10,000 litre x 2	Higgins Contractors HB Limited	Napier	Allan Tuck 835 7288
	Beards Environmental	Hastings	

SEE following Section on **Waste Disposal** for more Contacts

#### Sorbents

Rolls 910 x 46m (4)	NZ Safety	Mooring Loft, NP	Port Security 833 4440
Sheets 460mm x 460mm (500)	NZ Safety	Mooring Loft, NP	
Pillows 360 x 640 x 130mm	NZ Safety	Mooring Loft, NP	
Mini Booms 80mm x 1.2m (36)	NZ Safety	Mooring Loft, NP	
Oil Snares (60)	MNZ	Mooring Loft, NP	
Sorbent Pads 450mm x 450mm x 10 mm (1600)	MNZ	Mooring Loft, NP	
Sorbent Pillows 450mm x 450mm x 130mm (60)	MNZ	Mooring Loft, NP	
Matasorb M55 Sorbent Booms (48)	MNZ	Mooring Loft, NP	
Absorbent 200mm x 3m (32)	NZ Safety	Mooring Loft NP	
Absorbent 80mm x 3.6m (8)	NZ Safety	Mooring Loft NP	
Absorbent 300mm x 60m	NP	Mooring Loft NP	

Equipment	Owner	Location	Contact
<b>Tankers</b>			
1,300 litre x 9 (mobile diesel)	HBRC	Guppy Road	845 9210
1,300 litre (for water only) (1)	HBRC	Guppy Road	
<b>Recovery Systems</b>			
Slurp Unit on Response Trailer	HBRC	Coastguard Compound	HBRC Pollution Response 0800108838

Desmi minimax skimmer	MNZ	Mooring Loft	Port Security 833 4440
<a href="#">Ramjet rope mop</a>	<a href="#">MNZ</a>	<a href="#">Mooring Loft</a>	
Komara Skimmer	MNZ	Mooring Loft	
<a href="#">Delta Head skimmer</a>	<a href="#">MNZ</a>	<a href="#">Mooring Loft</a>	
Extractor pro hand wringer	MNZ	Mooring Loft	

#### Trucks

Isuzu 6 cubic metre	HBRC	Guppy Road	845 9210
Ford Trader 1.5 tonne	HBRC	Waipukurau	06 858 8636
Diahatsu 1.5 Tonne Flat Deck	HBRC	Guppy Road	
4WD Flat Decks	DOC	Napier	Dave Carlton 834 3111
Various Trucks	Diack Brothers	Napier	Chris Diack 843 6688
Diack and flat deck trucks	JPR Trucking	Napier	Paul Wheatley 021 443209 or 844 8197

#### Trailers

Oil Spill Response Trailer	HBRC	Coastguard Compound	HBRC Pollution Response 0800108838
----------------------------	------	---------------------	------------------------------------

#### Other Vehicles

Forklift (Nissan) (1)	HBRC	Guppy Road	845 9210
Various 4x4 quads	HBRC	Guppy Road	
Motor Bikes and Utes 4x4	HBRC	Guppy Road	
Various 4x4	DOC	DOC Field Centres	Dave Carlton 834 3111
Motor Bikes and Utes	DOC	DOC Field Centres	

#### Fire Fighting Foam Stocks

PIEAC Oil Company Stocks	PIEAC	Caltex Oil, Napier	Darryl Burt 834 0930
NZ Fire Service	NZFS	Napier	843 6123

#### Pumps

Various types flood pumps	HBRC	Guppy Road	845 9210
Tsunami pumps x 2	HBRC	Guppy Road	
Portable High Pressure x5	DOC	Napier	Dave Carlton 834 3111
WAJAX x 2	DOC	Napier	
Large Capacity portable & S.P.	NZ Fire Service	Napier	843 6123
Spate pumps x 2	MNZ	Mooring Loft, NP	Port Security 833 4440
WAJAX x 2	DOC	Wairoa	Helen Jonas 06 838 8252
HPHV Pump			
Shindaiwa			
Stihl blower (inflator) x 1	MNZ	Mooring Loft	Port Security 833 4440
Quicksilver hand pump x 1	MNZ	Mooring Loft	

Equipment	Owner	Location	Contact
<b>Lighting Equipment</b>	City Hire	Napier	835 9769
Mobile Generators x2	NZFS	Napier	843 6123
<b>Skip Hire</b>			
Mini, Jumbo. Maxi	Jones Rubbish Bins	Napier	843 4888
Jumbo Bins up to 10m <sup>3</sup>	Wastecare	Napier	879 9927



Jumbo Bins	Jacksons Jumbo Bins	Napier	835 1205
<b>Incident Command Centre ID Vests</b>	MNZ	HBRC Council Chambers	Lisa Pearse 0274 435 069
<b>Personal Protective Equipment</b>	HBRC	Cupboards Equipment Crate Napier Port Mooring Loft	Port Security 833 4440
<b>Site Safety Management</b> Incl traffic management & decontamination areas	Fulton Hogan	Napier	835 6639
<b>Hand Held Radios</b>			
<b>Marine VHF</b>			
VHF Intrinsically safe x 3	HBRC	Hydrology	Ian Lilburn
Intrinsically safe VHF x 5	Napier Port	Napier Port	Port Security 833 4440
UHF H/Held x 3	Napier Port	Napier Port	
<b>Vessels of Opportunity:</b>	Napier Maritime Radio	Maritime Ops (Wgtn)	04 914 8333
	RCCNZ	Wgtn	04 914 8330
	Napier Harbour Radio		834 4440
	Napier Bay Coast Radio		836 6376
	HB Sport Fishing Club		835 8911
	Napier Port Duty Pilot		833 4471
	HB Volunteer Coastguard	Or NZ Police 831 0700	0274 841 161
	Dept of Conservation		834 3111
<b>Services</b>			
Mechanical Repairs	Suvc		843 5949
Hydraulic Repairs	Suvc		
	Hydraulink Hastings/Napier	0800 806 666	835 9671
Electrical Repairs	Electro tech Controls Ltd		835 2260
Marine Repairs & Supplies	Firmans Marine Centre		835 9718
Marine Repairs & Supplies	Barton Marine Ltd		835 8880
Cordage supplies	Cookes		834 0690
Fuel Removal	Fuelquip		0800 830 831
	Beard Environmental		027 447 9539
Security	HSM Rapid Response	0800 548 347	06 870 8111
<b>Commercial Divers</b>			
Land based and Underwater Engineering			
NZ Diving & Salvage Ltd		04 568 2505	021 1295 294

## 2.3.2 Resources

### 2.3.2.1 Helicopters and Aircraft

Helicopter and aircraft types, payload, range/endurance, communications fit, restrictions etc for dispersant spraying operations are listed below. Napier Airport will arrange all the necessary ground support facilities and flight clearances on behalf of the OSC.

Most of these craft have GPS and spray gear fitted and only require the relevant nozzles to be fitted in order to spray dispersant. Note that TK10 nozzles will only be required for heavy fuel oil or crude oil spills. Most top dressing operators equipment will spray to approximately 650-700 micron sized droplets. This is suitable for low to medium viscosity spills.

#### Helicopters

- Shoreline Helicopters Limited, Bridge Pa, Hastings. Rick Graham 836 6798 or 0274 433 537
- Helispray HB, Mark Williams, Hastings...[ph 0800 144 354](tel:0800144354) or 0274 432 766
- ~~Ashworth Helicopters Ltd Wairoa 06 867 7128 Wayne Ashworth 027 432 3103 or Russell Vickers Gisborne 027 443 4144 Charteris Choppers, Wairoa. Blake, ph 0274 434141~~
- Helicopters Hawke's Bay. [06 8799242](tel:068799242), Jimmy Guerin 021 673 426
- ~~Heliteam – Hamish Shield 021 808 849~~
- Faram Aviation Group – Hastings Joe Faram 027 444 4414 or ~~Ray Worters 027 446 3344~~
- Gisborne Helicopters 0800 875 550 or Peter Moore 027 444 8964
- ~~Ray Worters 027 446 3344 Gisborne~~

Gisborne Helicopters Choppers	Based	Dispersant tank capacity (litres)	Transit speed (kts)	Minimum runway length (m)	Contact
Hughes 300 (3)	Napier	550	90	N/A	Shoreline
Squirrel AS (2)	Hastings	750	120	N/A	Helispray
R44 (1)	Hastings	300	110	N/A	Helispray
Hughes 500D (1)	Wairoa	500	90	N/A	<del>Ashworth</del> Charteris (Blake)
<del>Bell Long Ranger</del>	<del>Gisborne</del>	<del>600</del>	<del>120</del>	<del>N/A</del>	<del>Ashworth</del>
<del>Jet Ranger</del> <del>Bell Jet Ranger 114 (1)</del>	<del>Gisborne</del> <del>Gisborne</del>	<del>450</del> <del>500</del>	<del>90</del> <del>90</del>	<del>N/A</del> <del>N/A</del>	<del>Ray Worters</del> <del>Ashworth</del>
Hughes 520 (1)	Hastings	450	80	N/A	Helicopters HB
Squirrel	Hastings	750	120	N/A	Helicopters HB
Jet Ranger (1)	Hastings	450	90	N/A	Helicopters HB
<del>Hughes 500D (2) Twin engine 902 ①</del>	Hastings	500	90	N/A	Faram
Squirrel (2) ①	Hastings	1,400	120	N/A	Faram
Hughes 500 (22)	Gisborne	500	90	N/A	Gisborne Helicopters
Bell 407	Gisborne	1,200	120	N/A	Gisborne Helicopters
R44 (12)	Gisborne	370	110	N/A	Gisborne Helicopters

Formatted Table

① Aerial observation/lifting/transport only (no spray capacity).

Aircraft

- Johnson Air Services have agreed to respond to an oil pollution incident as required. 068 876 6379
- ~~Astro Air have also agreed to respond 06 877 8850 Jim Frogley 0274 442 796.~~
- Air Napier 06 835 6182 or Gary Peacock 027 445 1499

<i>Fixed Wing</i>	<i>Propulsion</i>	<i>Dispersant tank capacity (litres)</i>	<i>Transit speed (kts)</i>	<i>Minimum runway length (m)</i>	<i>Contact</i>
Fletcher (2)	Piston	1050	115	400	Johnson Air Services
<del>Beaver (4)</del>	<del>Piston</del>	<del>1200</del>	<del>100</del>	<del>400</del>	<del>Astro Air</del>
Various (5)	Piston	2-6 seater	120-160	Various	Air Napier

Formatted Table

Aircrew

Pilots and reliefs will be provided by the companies as necessary. Pilots are qualified to fly VMC (Visual Met. Conditions) to 50 feet altitude over water.

Supplementary air support

If additional air support is required, then the Hawke's Bay Regional Council may arrange supplementary support from the following list. Most of these aircraft have GPS systems.

*Note: These organisations have not been contacted specifically regarding oil spills and may not be able to assist with dispersant spraying operations, but will be used for overflights, transportation and control or dispersant application:*

Helicopters

Skyline Aviation Ltd, Napier. 2 Squirrels incl Lowe Corporation which they manage. Contact 06 870 8703

- Lowe Rescue Helicopter Services, Hastings Hospital (see above).
- Helipro (Palmerston North) 06 357 1348

Aircraft

Fixed wing (spotters)

- Air Napier. Cherokee (6 seat) single engine, Piper Seneca (6 seat), Navaho (8 seat). Contact: 835 6192 or 0274 451 499
- Air Gisborne, Gisborne, (6 aircraft) - Andrew Reid  
Contact: 06- 867 4684 (24Hrs)

### 2.3.2.2 Tugs, Launches and Boats

VESSEL	OWNER	LOA METRES	DRAFT METRES	SPEED KNOTS	SURVEY LIMITS	FIRE PUMPS	F/MONITORS	FOAM	DISPERSANT	LOCATION	CONTACTS W/H	CONTACTS A/H
Te Mata	Napier Port(Ops)	29	5.3	11.0	Coastal	<input type="checkbox"/>	<input type="checkbox"/>	<input type="checkbox"/>	<input type="checkbox"/>	Port	06 833 4440	06 833 4440
Ahuriri	Napier Port(Ops)	29	6.5	11.0	Coastal	<input type="checkbox"/>				Port	06 833 4440	06 833 4440
Pania	Napier Port(Ops)	12	1.2	19.0	Restricted inshore & enclosed					Port	06 833 4440	06 833 4440
Survey	Napier Port (Surv)	5	1.0	25	Enclosed waters					Trailer / Boat	021 246 7400	021 246 7400
Kahutara	MeFMPI	5.9	0.6	35	Enclosed waters					Napier	06 835 1065	06 835 1065
Osprey "Tiniwaka"	DoC Napier	5.9	1	35	3 nm offshore					Napier or Aramoana	834 3111	021 178 4325 or 843 8036
Fryan Alum Dingy	DoC Napier	3.6	0.6	20	Enclosed waters					Napier	834 3111	021 178 4325 or 843 8036
Survey Boat	HBRC	4.0	0.6	20	Enclosed waters					Napier	027 455 592	027 455 592
RIB	DoC	3.7			3 nm offshore					Wairoa	06 838 8252	0274 998 527
Alloy Boat	DoC	5.9			3 nm offshore					Wairoa	06 838 8252	0274 998 527
CK Rescue	HBV Coastguard	11.7	1.0	35	Coastal					Napier	834 1345	0274 841 161

### 2.3.2.3 **Sample Labs**

#### Oil Spill Sample Laboratories

AgriQuality NZ Ltd  
Gracefield Research Centre  
Gracefield Road  
Lower Hutt  
Tel. 04 570 8800  
Fax. 04 570 8829

NB AgriQuality do not offer oil fingerprinting services

### 2.3.2.4 **Waste Disposal**

Destinations for the bulk disposal of waste oil in Hawke's Bay are as follows:

Oil that contains water could be transported byte:

Beard Limited  
PO Box 8162  
Havelock North  
Contact: Dan Beard, **06 874 7776 or 0274 479 539**  
(have 50T storage capacity and can separate oil / water)

Allens Liquid Waste Disposal Service  
PO Box 2448  
Stortford Lodge  
Hastings  
Contact Stewart Hodges – Manager **06 879 9114 (24 hr)**

T. Flanders Waste Limited  
PO Box 8249  
Havelock North  
Contact: Thomas Flanders Manager **06 877 6785 or 025 453 330**

Kleer Drain Liquid Waste Removal  
PO Box 2143  
Hastings  
Contact: Ken Davidson – Manager **06 878 3549 or 027 448 042**

Maritime NZ has developed a contract with Envirowaste to provide all waste treatment services during a marine oil spill, which will include transport, disposal, and temporary storage of oily waste (and other waste streams) and also the provision of oiled equipment decontamination and cleaning. Although Envirowaste does not have a branch in Hawke's Bay they can coordinate the mobilisation of local contractors to provide this service through Maritime NZ. Contact Des McCleary 0274 874 946, Brendon Taunt 0272256520, Dean Burwell 0274784022, Wayne Plummer 021966488.

### 3. LOCATIONS

Depending upon the size of a spill and response, an emergency operations centre (EOC) could be established at a venue close to the site or at the HBRC. Alternative sites, such as Centennial Hall could be a short term option, or identifying a large building not being used to minimize disruption. The Works Asset Manager at Napier City Council should be able to provide advice in this regard.

Initial There is a ROSC kit stored in the Team Leader Compliance office to assist in initial response.Equipment

Formatted: Underline

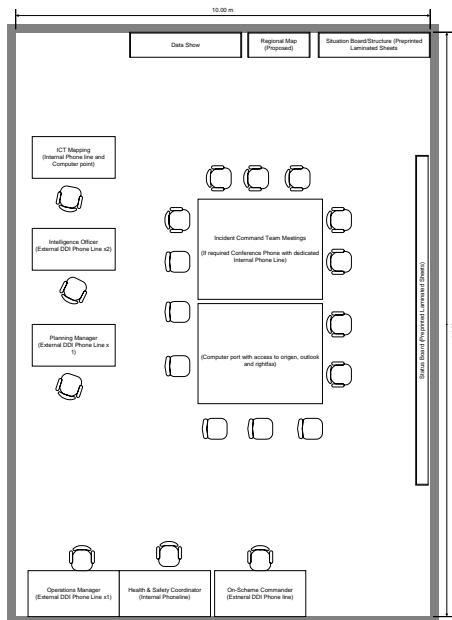
Formatted: Underline

ROSC Kit - A opaque plastic box and white card board chart cylinder (both labelled with 'Oil Spill'). These contain eCharts (NZ56 Table Cape to Blackhead Point, NZ561 Approaches to Napier, NZ 5612 Napier Roads and NZ57 Blackhead to Castle Point), NZ Nautical Almanac, Hawke's Bay's Tier 2 Plan, Regional Responders Aide Memoir, notebook, pens, pencils, brass dividers, parallel rule, ROSC Training Manual, Regional Responders Training Manual, incident Controllers jerkin and a copy of the Maritime Transport Act 1994. These items will be required for a major spill. The ROSC has the knowledge of locations for these items.

#### 3.1 EMERGENCY OPERATIONS CENTRE & EQUIPMENT

The Hawke's Bay Regional Council CDEM Office at 159 Dalton Street, Napier can operate as a mini-EOC,- Contact the HBRC Duty Manager in the first instance on (06) 835 9200 (24/7). If the response becomes larger the Council Chambers can be the main Intelligence Centre for operations, and staff will use the rest of the Council building in a similar manner to a CDEM response (refer to HBRC Emergency Procedures Manual for layouts).

The Regional OSC will ask the Logistics Manager to set up the Emergency Operations Centre in accordance with the Floor Plan. The Regional OSC will designate the personnel in each position who will assume the first roster.



The following facilities are available at the Emergency Operations Centre:

Maps, plotting boards, tables, chairs, whiteboard, OHP, computer terminals, HO Charts, regional maps, & communications including:

- CDEM Regional Radio Network
- Telecommunications including Analog and Mitel Phone System
- Fax
- Email
- Vehicle Fleetlink Network
- Marine Radio

There are also additional meeting rooms, for samples there are 2 lockable fridges & one small freezer inside 'compliance access' only cage with Chain of custody procedures in HBRC enforcement manual, Cooking Facilities, Showers, and toilets.

Team Identification

A selection of six different coloured vests are stored in the Council Chambers to identify key personnel within groups working in the Emergency Operations Centre. The vests are designed to be worn over normal clothing, and should be worn by the key personnel whenever the Emergency Operations Centre is set up, including during exercises. There are six groups each with 4 vests.

<b>Black</b>	Operations	<b>Purple</b>	Logistics
<b>Blue</b>	Planning	<b>Green</b>	Finance
<b>Yellow</b>	Administration	<b>Red</b>	OSH

Hydrographic Charts

Laminated plotting charts are stored in the HBRC Councillors Room (CDEM Intelligence Room). The relevant Hydrographic Charts for the HBRC coastline and adjoining regions are:

Chart Number	Location
NZ55	Cape Runaway to Table Cape: Hicks Bay
NZ56	Table Cape to Blackhead Point
NZ57	Blackhead Point to Castle Point
NZ571	Approaches to Napier
NZ5551	Plans on the East Coast
NZ5613	Poverty Bay and Approaches to Gisborne
NZ5712	Napier Roads: Napier Harbour

The following items should be made available at the Emergency Operations Centre. These will be supplied as required by the Logistics Team.

National Marine Oil Spill Contingency Plan	RC Emergency Management Office
MNZ Regional Responder Aide Memoir	RC Emergency Management Office
Regional Coastal Plan	Library
NZ Nautical Almanac	Harbour Master's (ROSC) Office/ Alternative OSC's Office, Team Leader Compliance Office
New Zealand Atlas of Coastal Resources (Tortell 1981)	Harbour Master's Office
Order / Purchase Books;	Financial Section
Personnel passes	Reception
EOC desk / place labels;	Council Chambers

Relevant hydrographic charts (see below);	HBRC Councillors Room (CDEM Intelligence Room)
Topographic Maps	HBRC Councillors Room (CDEM Intelligence Room)
Log sheets or Origen Emergency Management Information System, or CDEM EMIS	Council Chambers/Computer Services
Incident Command Team phone list;	CDEM Database/ Duty Manager / ROSC
Petty Cash.	Finance Section

### 3.2 TEMPORARY STORAGE FOR OIL WASTE

Temporary storage for oily waste may be made in the vicinity of the spill site as there are no approved sites in Hawke's Bay for this type of waste. An appropriate site should be chosen where oily waste is banded and these banded areas need to be covered to prevent rainfall intrusion. A landfill site may also be an appropriate area for temporary storage. Envirowaste can assist – refer to 2.3.2.4.



### 3.3 REGIONAL AIRSTRIPS

See: Aeronautical Information Publication (AIP), *Visual Flight Guide* (Annual Updates).

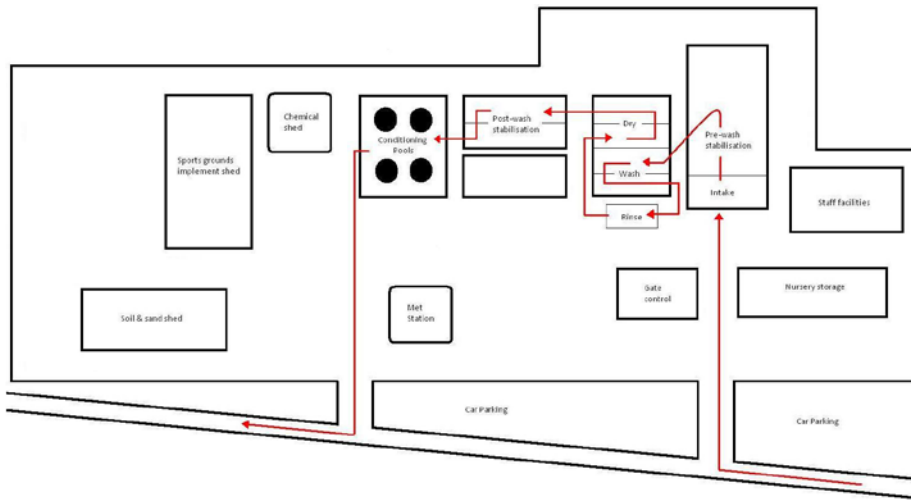
COASTAL AREA	LOCATION	MAP Co-ORDINATES	PROPERTY	OWNER / MANAGER	TELE	FAX	APPROVAL
Whangaehu Blackhead	Hunter Road Porangahau	V24 208 963		David Darby	06 855 5095		<input type="checkbox"/>
Blackhead Aramoana	Long Range Rd	V23 331 086	Te Aratoi Station	Caroline Leonard	06 857 7831		<input type="checkbox"/>
Aramoana Mangakuri	N-S Clare Inch Road E-W	373 233 V23 371 227	Waipari Stn  Clare Inch Stn	Mark Warren  Jim Brookes	06 857 3731  06 857 3736		<input type="checkbox"/>
Mangakuri Te Apiti	Kairakau Rd Mangakuri Rd	041 345 V22 447 310	Waipuna Stn  Mangakuri Stn	McNeil (Mgr) PG Williams Ian Waterson	06 858 4305 06 858 4268 06 858 4280		<input type="checkbox"/> <input type="checkbox"/>
Te Apiti C.Kidnappers	Waimarama Rd	W22 511 503	Timoti Farm Ltd	John Barny (Mgr)	06 874 6882		<input type="checkbox"/>
C.Kidnappers Waikari R.	Napier SH2	V21 428 862	Napier Airport	Manager Tower	06 835 3477 06 835 7584	06 835 7583	
Waikari R Waihua	Mohaka Coach Road	W19 687 256	Springhill Stn	Tim Archer (Mgr)	06 837 6813	06 837 6813	<input type="checkbox"/>
Waihua Whakaki	Wairoa	X19 913 345	Wairoa Aerodrome	Aero Club	06 838 6270		
Whakaki Long Pt.Table Cape Mahanga	Tahaenui	X19 145 292	Tahaenui Stn.	John Bayly	06 837 8707	06 837 8514	
Long Pt. Table Cape	Lane Road Mahia Peninsula	XY20 355 218	Homestead Stn	Jack Bowen	06 837 5664		<input type="checkbox"/>

### 3.4 WILDLIFE TEMPORARY HOLDING CENTRES (THC) & OILED WILDLIFE FACILITIES (OWF)

#### 3.4.1 Napier / Hastings Area

THC & OWF (Birds only)	Contact	Facilities	Capacity
<b>Napier City Council Plant Nursery</b> Nelson Park Napier	Debra Stewart Napier City Council 06 835 7579 wk 06 833 9739 DDI 0274 700019	Refer attached Site Survey – Appendix A	Room to expand the centre as there are a number of glasshouses and shadehouses.

Refer HAZ13 Letter from NCC dated 10/9/10 regarding the use of the Nelson Park Nursery for Oil Spills. Floor plan of Nursery shown below with suggested layout of facilities required for the response operation. Radio communications have previously not worked well from Nelson Park to outlying areas so the communications plan needs to accommodate this - a temporary aerial might be installed to overcome this limitation.



The SPCA Napier and Hawke's Bay, and Hawke's Bay Fish and Game Council may be able to provide specialist services or equipment to assist with the response operation for rehabilitation.

THC & OWF	Contact	Facilities	Capacity
<b>Hastings Show Grounds</b> Kenilworth Road Hastings	06 878 3123 Hillary Riches 021 868643 Brent Lynn	Refer attached Site Survey – Appendix A	Good alternative to Nelson Park Nursery with room to expand as required.

### 3.4.2 Northern Hawke's Bay

THC & OWF	Contact	Facilities	Capacity
HBRC <b>Wairoa Depot</b> Freyburg Street Wairoa	Peter Manson 06 838 8527 Or Helen Jonas (DoC) 06 838 8252	Additional requirements noted below.	Depends on species and outdoor space that is utilised.

This site is the first choice for location of wildlife response operations for stabilisation of wildlife recovered from coastal locations within 30 minutes drive; cleaning activities; and rehabilitation. The HBRC and DOC share the site. A floor plan of the HBRC Wairoa Depot is shown over and outlines a suggested layout of facilities required for the response operation.

These activities depend upon the availability of personnel, equipment and consumerables. Special mobilisation considerations for the site would include:

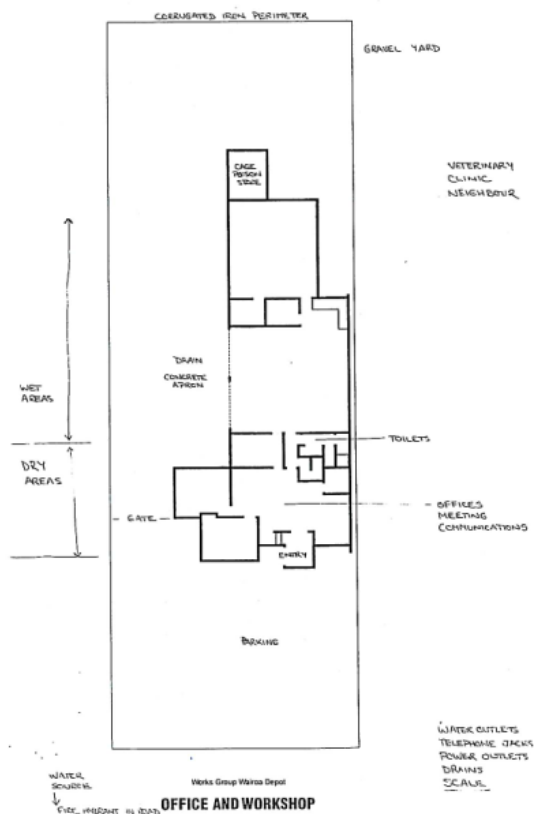
1. Pack-up & decontaminate site - transfer poisons to an alternative secure site if required;
2. Notification of neighbours;
3. Establishment of water supply from street mains / hydrant by protected hose across roadway and continuous heating equipment for water;
4. Hosing, pump and storage tank for collection and subsequent disposal of effluent water contaminated with detergent, oil, avian wastes;
5. Installing forced ventilation fans and heating equipment (hire required?);
6. Marquee to be erected in courtyard, with supplementary lighting to courtyard;
7. Hire refrigeration unit for bird food storage;
8. Install security measures.

With respect to Portland Island (in particular Shore plover) stabilisation would occur at the Woolshed site on Portland Island. Transport would be via helicopter to HBRC Wairoa Depot.

NB: DOC has two portable aviaries that may be used close to a spill site. Their dimensions are: 10m x 2.5 m x 1.8 metres high; 2m x 2m x 3 metres high.

THC	Contact	Facilities	Capacity
<b>Opoutama YMCA</b>	WDC 06 838 7309	Limited by lack of sufficient drainage (uneven floor - pooling likely) and high pressure water supply. Also, bore head susceptible to contamination from building drainage.	Depends on species.

This has low potential as an oiled wildlife facility but may be used as a base for immediate wildlife stabilisation.



3.4.3 Southern

Hawke's Bay

*HBRC Wairoa Depot Floor Plan showing suggested layout of facilities required for a wildlife response operation*

THC	Contact	Facilities	Capacity
<b>Waipukurau Show Grounds</b>	CHB A&P Assoc Helen Ormsby 06 858 9470	Refer attached Site Survey – Appendix A	Depends on species.

Due to the isolated nature of the southern coastline and lack of facilities any oiled wildlife response in this part of the region will need to rely on equipment and facilities brought in to the response site.

The option of transporting oiled wildlife (that have been stabilised) to Massey University facilities rather than the Oiled Wildlife Facility at Nelson Park Nursery should be considered.

## Oiled Wildlife Recovery Site Survey

**DWYER**tech  
services Ltd

*Quality outcomes every time!*

**Region:** Hawkes Bay

**Date:** 22.09.09

**Site Name & Address:** Nelson Park  
Napier

**Contact name:** Debra Stewart, Parks & Reserves, Napier City Council

**Contact phone:** 06 833 9739, Cell 027 470 0019

**Who owns the site:** Napier City Council

**Who controls the site:** Napier City Council

**Site plan available?** Yes – see accompanying photos

**Sewer connection:** 100mm town connection

**Water main size/flow:** 100mm at boundary, good flow

**Hot water system:** Domestic supply only, requires additional capacity

**Power supply:** 3 phase power in workshop

**Parking:** Limited parking inside compound. Plenty of extra parking just outside gates

**Truck access:** Good – 'drive through' possible

**Hard standing:** Yes – near glasshouses, suitable for container

**Security:** Excellent – shed at entry for personnel control. Double security with Nelson Park main gates

**Area for managing site:** Shed at entry

**Induction area:** Possibly part of nursery building

**Outside lighting:** Limited on-site, but easy to add to. Additional field lighting on Nelson Park

**Existing wash room:** Yes – easy conversion of nursery building

**Area for container:** Yes – near glass houses

**Area for marquee:** Yes – in area behind ‘Sport ground implement shed’

**Toilets:** Limited – ok for start up. Porta-loos required

**Showers:** Not available on-site. Showers available in changing facilities for Nelson Park

**Kitchen:** Small on-site kitchen. Large kitchen in R.C MacInnes Pavilion at Nelson Park

**Rest area for staff:** Small staff room on-site. Large personnel area at R.C MacInnes Pavilion.

**Catering:** Caterers could work from Pavilion kitchen/dining. Napier CBD handy for other options

**Accommodation:** Plenty nearby

**Distance to town:** < 2 km to CBD

**Nearest airport:** Hawkes Bay Airport 4 km away

**Difficulties:** No significant difficulties

**Comments:** A very good site for oiled wildlife response, with many positive attributes

A quiet site despite being close to the CBD

**Water Softness:** N = 2, Result = 60 mg/LCaCO<sub>3</sub>

(very soft)

## Oiled Wildlife Recovery Site Survey

**DWYER**tech  
services Ltd

*Quality outcomes every time!*

**Region:** Hawkes Bay

**Date:** 22.09.09

**Site Name & Address:** Hastings Show Grounds  
Kenilworth Rd, Hastings

**Contact name:** Hillary Riches or Brent Lynn

**Contact phone:** (06) 878 3123, email: [ceo@hawkesbayshow.co.nz](mailto:ceo@hawkesbayshow.co.nz) 021 868643

**Who owns the site:** Hawkes Bay A&P Society

**Who controls the site:** Hawkes Bay A&P Society

**Site plan available?** No

**Sewer connection:** Yes

**Water main size/flow:** Yes, adequate flow

**Hot water system:** Yes

**Power supply:** Three phase

**Parking:** Plenty – sealed areas and grassed

**Truck access:** Very good

**Hard standing:** Large sealed area around grand stand

**Security:** Good, could secure a small area within complex easily

**Area for managing site:** Numerous buildings on-site which may be suitable

**Induction area:** Numerous buildings on-site which may be suitable

**Outside lighting:** Good amount of outdoor lighting

**Existing wash room:** Yes – concrete floored area under grandstand would be ideal

**Area for container:** Yes – large sealed area next to grandstand

**Area for marquee:** Plenty of sealed or grassed areas handy to grandstand

<b>Toilets:</b>	<u>Yes, complex has multiple toilet blocks</u>
<b>Showers:</b>	<u>Yes</u>
<b>Kitchen:</b>	<u>Yes?</u>
<b>Rest area for staff:</b>	<u>Numerous buildings on-site which may be suitable</u>
<b>Catering:</b>	<u>&lt; 5 km from Hastings CBD</u>
<b>Accommodation:</b>	<u>&lt; 5 km from Hastings CBD</u>
<b>Distance to town:</b>	<u>&lt; 5 km from Hastings CBD</u>
<b>Nearest airport:</b>	<u>Napier c. 30 km</u>
<b>Difficulties:</b>	<u>Potentially a high-usage site, for example:</u>
	<u>Hawkes Bay Show – late October</u>
	<u>Horse of the year - March</u>
	<u>Farmers market - weekly</u>
<b>Comments:</b>	<u>This site would be a good alternative to the Nelson Park Nursery</u>
	<u>Venue Attributes:</u>
	<ul style="list-style-type: none"> <li>• The Exhibition Hall (52 x 18m)</li> <li>• Under Grandstand facility (80 x 12m)</li> <li>• Waikoko Room (3rd floor of Grandstand)</li> <li>• The Oval / Arena</li> <li>• Grandstand seats 2500</li> <li>• Horse area / stabling and yards , Dog Trial Area</li> <li>• Cattle Pavilion, Sheep Pavilion #1, Horse/Cattle Pavillion #2</li> <li>• Shearing Shed</li> <li>• Plentiful parking</li> <li>• All situated on 42 hectares on outskirts of Hastings.</li> </ul>
	<u>The site is large enough for an oiled wildlife response to be undertaken concurrently with some of the other smaller events in the facilities events calendar.</u>
<b>Water Softness:</b>	<u>N = 3, Result = 100 mg/LCaCO<sub>3</sub></u>
	<u>(Soft)</u>



## Oiled Wildlife Recovery Site Survey

**DWYER**tech  
services Ltd

*Quality outcomes every time!*

**Region:** Hawkes Bay

**Date:** 21.8.13

**Site Name & Address:** Waipukurau Show Grounds (Central Hawkes Bay)  
Waipukurau

**Contact name:** Helen Ormsby, President, CHB A&P Assoc.

**Contact phone:** 06 858 9470

**Who owns the site:** CHB A&P Assoc?

**Who controls the site:** CHB A&P Assoc?

**Site plan available?** ?

**Sewer connection:** ?

**Water main size/flow:** ?

**Hot water system:** ?

**Power supply:** ?

**Parking:** Plenty – grassed areas

**Truck access:** Adequate

**Hard standing:** Some sealed areas, mostly grass

**Security:** Would require extra security

**Area for managing site:** Numerous buildings on-site which may be suitable

**Induction area:** Numerous buildings on-site which may be suitable

**Outside lighting:** Only on main field

**Existing wash room:** Yes – concrete floored shed with double garage doors at either end.  
Implement shed would possibly be suitable too

**Area for container:** Yes

**Area for marquee:** Plenty of grassed areas

**Toilets:** Yes basic toilet blocks

**Showers:** ?

**Kitchen:** Yes – upstairs in main building

**Rest area for staff:** Yes – upstairs in main building with outdoor deck

**Catering:** < 2 km from Waipukurau

**Accommodation:** < 2 km from Waipukurau

**Distance to town:** < 2 km from Waipukurau

**Nearest airport:** Napier c. 60 km

**Difficulties:** Used for school rugby, boxing, A&P show etc.

\_\_\_\_\_

\_\_\_\_\_

\_\_\_\_\_

**Comments:** This site would be a good alternative to the Nelson Park Nursery for a small – medium response in the Southern Hawke's Bay

Alternatively it would make a good THC if necessary

Shearing pavilion would be useful for rehab – partly enclosed already

\_\_\_\_\_

\_\_\_\_\_

\_\_\_\_\_

\_\_\_\_\_

**Water Softness:** N = 3, Result = 100 mg/LCaCO<sub>3</sub>

(Soft)

## Regional Wildlife Response Equipment Contents

### Blue Box

These contents are intended to cater for 50 birds and 20 field personnel

	Item	Use	Number	Supplier	On shopping list?	Check ?
<i>Capture</i>	Transport boxes	Transportation of birds	50	Contact NZWHC		
	Matasorb (sorberent mats)	Lining bottom of transport boxes	100	Process lubricants		
	Pillow cases	Holding birds before placing in transport boxes	50	Manchester retailer		
	Wildlife Collection tags	Labelling boxes (live) & Bags (dead)	75	Contact NZWHC		
	Long handled dip nets	Net capture of birds	10	Fishing store or similar		
	Tyvex suits - size M	PPE	3	Safety store		
	Tyvex suits - size L	PPE	12	Safety store		
	Tyvex suits - size XL	PPE	12	Safety store		
	Tyvex suits - size XXL	PPE	3	Safety store		
	Nitrile gloves (disposable) - size S	PPE	2 boxes	Safety store		
	Nitrile gloves (disposable) - size M	PPE	2 boxes	Safety store		
	Nitrile gloves (disposable) - size L	PPE	3 boxes	Safety store		
	Safety sunglasses	PPE	20 pairs	Safety store		
	PVC gloves	PPE	20 pairs	Safety store		
	High visibility Safety Vests	PPE	20	Safety store		

		Whistles	Attracting attention in the field	20	Tramping store		
		Hibitane/Hibiclens disinfectant - 500ml	Hand cleaning	1	Order through local veterinarian		
		Paper towels	Hand cleaning	10 rolls	Supermarket	Y	
		Alcohol hand gel (small bottles)	Hand cleaning	20	Supermarket	Y	
		Field note books (plastic paper)	Field notes	10	www.geosystems.co.nz		
		Pencils	Field notes	20	Local bookshop		
		Field Guide to Birds of NZ	Species Identification	1	Local bookshop	Y	
		Infectious waste bags	Containing oiled PPE etc	20	Contact NZWHC		
		Plastic leg bands for bird ID	Bird ID	50	Contact NZWHC		
		Sharpie pens	Labelling	10	Local bookshop		
<i>Stabilisation</i>		50ml syringes, without catheter	Oral fluid administration	20	Order through local veterinarian		
		20ml syringes, without catheter	Oral fluid administration	15	Order through local veterinarian		
		10ml syringes, without catheter	Oral fluid administration	15	Order through local veterinarian		
		Roll of silicone tubing	Oral fluid administration	20 m	Rubbermark		
		Cotton buds	Cleaning oil from eyes and mouth	5 pkts	Pharmacy		
		0.9% NaCl (500ml bottle)	Cleaning oil from eyes and mouth	2	Get at local veterinarians	Y	
		Squeeze bottles	Cleaning oil from eyes and mouth	3	Plastic box		
		Digital thermometer	Cloacal temperature taking	1	Local chemist/pharmacy		
		Electrolytes, powder	Oral fluid administration		Pharmacy, supermarket, vet clinic	Y	

<i>Dead bird collection</i>		Plastic bags	Holding dead birds	100	Plastic box		
		Cable ties, 200mm	Sealing bags	100	Hardware store		
		Cable ties, 100mm	Sealing bags	100	Hardware store		
<i>Administration etc</i>		Clipboards		5	Bookshop		
		Writing Pads		5	Bookshop		
		Nylon rope - 4mm 30m		2	Hardware store		
		Animal admission logs in folder	Complete for each animal	60	Photocopied forms		
		Register of equipment (in and out)		1	Contact NZWHC		
		Stock rotation schedule		1	Contact NZWHC		
		Audit checklist		1	Contact NZWHC		
		Non-tamper plastic sealing tag		1	Contact NZWHC/MNZ		
		Bird scare tape	Hazing	5 rolls	Farm supplier		
		Sports horn	Hazing	1	NZ Safety		
		<b>Rotatable stock:</b>					
		Nitrile gloves – check expiry dates during audit and replace as necessary					

## Regional Oiled Wildlife Response Trailers

These contents are intended to cater for 50 birds, 20 field personnel and 12 wash personnel

### PERMANENT TRAILER ITEMS

Equipment	Bin	Category	Use	Number	Supplier	Checked
Waders (various sizes)	1	Search & capture/PPE	Field work	5	Massey	
First aid kit	2	Search & capture/PPE	Rehab centre + staging site	1	NZ Safety	
waterproof notebooks	2	Search & Capture	Recording	10 (1 per field team)	Science supplier	
Pencils	2	Search & Capture	Recording	50 (2 per recorder)	Stationery retailer	
Bird bands	2	Search & Capture	Identification of individuals	150 minimum	Massey	
Wildlife collection tags	2	Search & Capture	Identification of individuals	75	Massey	
Dead bird bags	2	Search & Capture	Collecting dead birds	100	Packaging retailer	
Cable ties (100 mm)	2	Search & Capture	Collecting dead birds	100	Packaging retailer	
Field guide to birds of NZ	2	Search & Capture	species ID	1	Stationery retailer	
'Danger' Tape (300 m )	2	Search & Capture	constructing areas of exclusion	1	NZ Safety	
Bird Scare Tape	2	Search & Capture	Hazing	6	Farmlands	
Sports horn	2	Search & Capture	Hazing	5	Safety shop	
Pillow cases	2	Search & Capture	Collecting live birds	50	Manchester shore	
Hand nets	-	Search & Capture	Capture	10	Fishing store	
Matasorb' Sorbent mats	-	Search & Capture	Bottom of transport boxes	100	Process lubricants	
Transport boxes - Large	-	Search & Capture	Transport	20	Massey	
Transport Boxes - Small	-	Search & Capture	Transport	30	Massey	
Tarpaulins (4 x 6 m)	-	Staging	Shelter	4	Hardware store	
Warratah stakes & caps	-	Staging	Shelter	6	Farmlands	
Wind break (50 m rolls)	-	Staging	Shelter	2	Hardware store	
Trestle Table	-	Staging	Field stabilisation platform	1	Hardware store	
Rope	3	Tools	Shelter	4	Hardware store	
Masking tape	3	Tools	General	5	Hardware store	
Long-handled pruners	3	Tools	General	1	Hardware store	
Saw	3	Tools	General	1	Hardware store	
Stanley Knife	3	Tools	General	1	Hardware store	
Tape Measure	3	Tools	General	1	Hardware store	
Bottle Jack, 4000kg	3	Tools	General	1	Hardware store	
Staple Gun	3	Tools	Constructing shelter	1	Hardware store	

Staples (box of)	3	Tools	Constructing shelter	1	Hardware store
WD-40	3	Tools	General	1	Hardware store
Wheel Brace	3	Tools	General	1	Hardware store
Duct Tape	3	Tools	General	1	Hardware store
Cloth Tape	3	Tools	General	1	Hardware store
Torches, dolphin	3	Tools	General	5	Hardware store
Cable ties 200 mm	3	Tools	General	20	Hardware store
Extension Cords (30 m)	3	Tools	General	2	Hardware store
Tergo bird wash (20 L)	-	Wash	Detergent	2	Massey stockpile
Large wash tubs	-	Wash	Wash	6	Hardware store
Fire extinguisher	4	Wash/PPE	Stabilisation, wash	1	NZ Safety
Plastic aprons	4	Wash/PPE	Wash	12	NZ Safety
Water pik	4	Wash	Cleaning head	1	Dental supplier
Tooth brushes	4	Wash	Cleaning head	20	Supermarket
Small plastic tubs	4	Wash	Holding wash equipment	10	Hardware store
small measuring jugs	4	Wash	Detergent	4	Supermarket
Squeeze bottles	4	Wash	Cleaning head	5	Pharmacy
Towels	4	Wash	Wrapping	20	Department store
Cotton tips (pkt of 100)	4	Wash	Clean oil from delicate tissues	5	Pharmacy
Silicon tube; sm x 20m	5	Stabilisation	Rehydration	1	Massey
Silicon tube: lg x 4 m	5	Stabilisation	Rehydration	1	Massey
50 ml syringe	5	Stabilisation	Rehydration	20	Massey
20 ml syringe	5	Stabilisation	Rehydration	15	Massey
10 ml syringe	5	Stabilisation	Rehydration	15	Massey
Cotton tips (pkt of 100)	5	Stabilisation	Clean oil from delicate tissues	10	Pharmacy
Fire extinguisher	5	Stabilisation/PPE	Stabilisation, wash	1	NZ Safety
Heat lamps	6	Stabilisation	temperature modification	10	Hardware store
bulbs for heat lamps	6	Stabilisation	temperature modification	10	Hardware store
Enclosure thermometers	6	Stabilisation	Temperature monitoring	3	Electronics store
Scalpel Blades, Size 22	7	Postmortem	Avian necropsy	100	Medical supplier
Scalpel Handles	7	Postmortem	Avian necropsy	1	Medical supplier
Scissors, sharp	7	Postmortem	Avian necropsy	1	Medical supplier
Scissors, blunt	7	Postmortem	Avian necropsy	1	Medical supplier
Forceps	7	Postmortem	Avian necropsy	1	Medical supplier
Bone-cutting forceps	7	Postmortem	Avian necropsy	1	Medical supplier
Specimen Pottles Pink	7	Postmortem	Sample collection	100	Medical supplier

Bags, Biohazard	7	Postmortem	Waste collection	10	Medical supplier
Small sharps container	7	Postmortem	Used scalpel collection	1	Medical supplier
Tissue cassettes/sponges	7	Postmortem	Fixing tissue in formalin	20	Medical supplier
Whirlpak bags	7	Postmortem	Storing tissues once fixed	100	Medical supplier
Waterproof labels	7	Postmortem	To go in formalin with tissues	1 notebook	Science supplier
Syringes - 1ml	8	Veterinary	Blood collection	100	Medical supplier
Needles, 25g, 3/4 inch	8	Veterinary	Blood collection	100	Medical supplier
Capillary Tubes	8	Veterinary	Blood collection for PCV/TPP	400	Medical supplier
Cristaseal (Sealant)	8	Veterinary	Blood collection for PCV/TPP	2	Medical supplier
Refractometer	8	Veterinary	Reading TPP	1	Medical supplier
PCV chart	8	Veterinary	Assess PCV	1	Medical supplier
Calculator	8	Veterinary	Fluid calculations etc	1	Stationery retailer
Field centrifuge	-	Veterinary	Spin capillary tubes	1	Medical supplier
Cotton Balls (pkt of)	8	Veterinary	Swab for venipuncture site	1	Pharmacy
Micropore tape	8	Veterinary	For venipuncture site	1	Medical supplier
Coverslips (pkt of)	8	Veterinary	Parasitology	2	Medical supplier
Microscope Slides (pkt of)	8	Veterinary	Parasitology	1	Medical supplier
Small sharps container	8	Veterinary	Used needles etc	1	Medical supplier
Slide holder	8	Veterinary	Fixing slides	1	Medical supplier
Stethoscope	8	Veterinary	Auscultation	1	Medical supplier
Thermometer - digital	8	Veterinary	Cloacal temperature	1	Medical supplier
Multisorb swabs – box sm	8	Veterinary	Wound dressings	1	Medical supplier
Multisorb swabs – box lrg	8	Veterinary	Wound dressings	1	Medical supplier
Vet wrap	8	Veterinary	Bandaging	5	Medical supplier
Soffban	8	Veterinary	Bandaging	5	Medical supplier
Melolin	8	Veterinary	Bandaging	20	Medical supplier
First aid kit	8	Veterinary/PPE	Rehab centre + staging site	1	NZ Safety
Zeolite	-	Cleaning & hygiene	Cleaning up spills	1	Engineer supplier



**TRAILER SHOPPING LIST**

<b>Equipment</b>	<b>Category</b>	<b>Use</b>	<b>Number</b>	<b>Supplier</b>	<b>On Shopping list</b>
Tyvex suits	PPE	All stages	1/person/day for 3 days	NZ Safety	Y
Nitrile gloves size S (box of 100)	PPE	All stages	10 pairs / person / day for 3 days	NZ Safety	Y
Nitrile gloves size M (box of 100)	PPE	All stages	10 pairs / person / day for 3 days	NZ Safety	Y
Nitrile gloves size L (box of 100)	PPE	All stages	10 pairs / person / day for 3 days	NZ Safety	Y
Protective sunglasses	PPE	Field work	1 per field personnel	NZ Safety	Y
Rubber gumboots	PPE	Wash, stabilisation	1 per field personnel - sizes variable	NZ Safety	Y
Sunblock	PPE	Field work	1 per field team	Supermarket	Y
Sunhats	PPE	Field work	1 per field personnel	NZ Safety	Y
First aid kit - small	PPE	Field work	one per field team	NZ Safety	Y
Waterproof jackets + pants	PPE	Field work	1 pair per field personnel	NZ Safety	Y
Ear plugs	PPE	Wash	1 packet per wash personnel	NZ Safety	Y
Safety goggles	PPE	Stabilisation, wash	1 pair per wash personnel	NZ Safety	Y
Overalls, cotton	PPE	All stages	3 pairs per personnel	NZ Safety	Y
Long gloves	PPE	Wash	1 per wash personnel	NZ Safety	Y
Face visors	PPE	Wash	1 per wash personnel	NZ Safety	Y
Boot covers	PPE	Wash	1 per wash personnel	NZ Safety	Y

Whistles	PPE	Field work	1 per field personnel	Tramping store	Y
PVC gloves	PPE	Field work	1 pair per field personnel	NZ Safety	Y
Alcohol hand gel (small bottles)	PPE	Field work	1 per field personnel	Supermarket / Pharmacy	Y
Batteries for torches	Tools	General	5	Hardware store	Y
Toothbrushes	Wash	Cleaning head	10	Supermarket	Y
Funnels	Wash	Pouring bird wash	2	Supermarket	Y
Electrolytes (Animal brands e.g. "Revive" for calfs, are preferable. Human brands are ok)	Stabilisation	Rehydration	to make 10 litres	Massey / Veterinarian / Rural Supplier / Pharmacy	Y
Saline (500 ml bottle)	Stabilisation	Removal of oil from eyes/nares	10	Massey / Veterinarian / Pharmacy	Y
Formalin (small bottle)	Postmortem	Fixing tissues	1	Massey / Veterinarian / Rural supplier	Y
A4 Lined Pads	Stationary	General	25	Stationery retailer	Y
Clipboards	Stationary	General	25	Stationery retailer	Y
Pencil Sharpener	Stationary	General	25	Stationery retailer	Y
Duct tape	Stationary	General	3	Hardware store	Y
Sharpie Permanent Marker Black	Stationary	General	25	Stationery retailer	Y
Food blender	Feeding	Rehabilitation - food prep	1	Department store	Y
Electronic Scales	Feeding	Rehabilitation - food prep	1	Department store	Y
Batteries for electronic kitchen scales	Feeding	Rehabilitation - food prep	as necessary	Hardware store	Y
Set of kitchen knives	Feeding	Rehabilitation - food prep	2	Department store	Y
Broom	Cleaning & hygiene	Cleaning	2	Supermarket	Y
Buckets	Cleaning & hygiene	Cleaning	5	Supermarket	Y
Chux Regular Cloths	Cleaning & hygiene	Cleaning	8	Supermarket	Y
Dustpan & Brush	Cleaning & hygiene	Cleaning	2	Supermarket	Y
Garbage Bags (roll of 10)	Cleaning & hygiene	Cleaning	3	Supermarket	Y
Paper Hand Towels (roll)	Cleaning & hygiene	Stabilisation/Cleaning	12	Supermarket	Y
Paper Kitchen Towels (roll)	Cleaning & hygiene	Cleaning	4	Supermarket	Y
Mop	Cleaning & hygiene	Cleaning	1	Supermarket	Y
Dish cleaning brushes	Cleaning & hygiene	Cleaning	2	Supermarket	Y

Scrubbing Brush	Cleaning & hygiene	Cleaning	3	Supermarket	Y
Hibiclens, 500ml	Cleaning & hygiene	Bacteriocidal cleaning	2	Medical supplier	Y
Simple Green All Purpose Cleaner	Cleaning & hygiene	General surface cleaner	1	Hardware store	Y
Dishwashing liquid	Cleaning & hygiene	Rehabilitation	1	Supermarket	Y
Tube Simple Green Hand Cleaner Gel	Cleaning & hygiene	Hand cleaning	2	Hardware store	Y
Trigene (Animal Trigene Advance, 1 Litre bottle)	Cleaning & hygiene	General purpose disinfectant	2	Medical supplier	Y