

Schedule 24a
Atua Road (North)
'wetland'

Legend

- Area referred in 'Wetland' definition
- Property boundary



DATA FROM: Farm information obtained from the Hawke's Bay Regional Council's Geographic Information Systems Database.

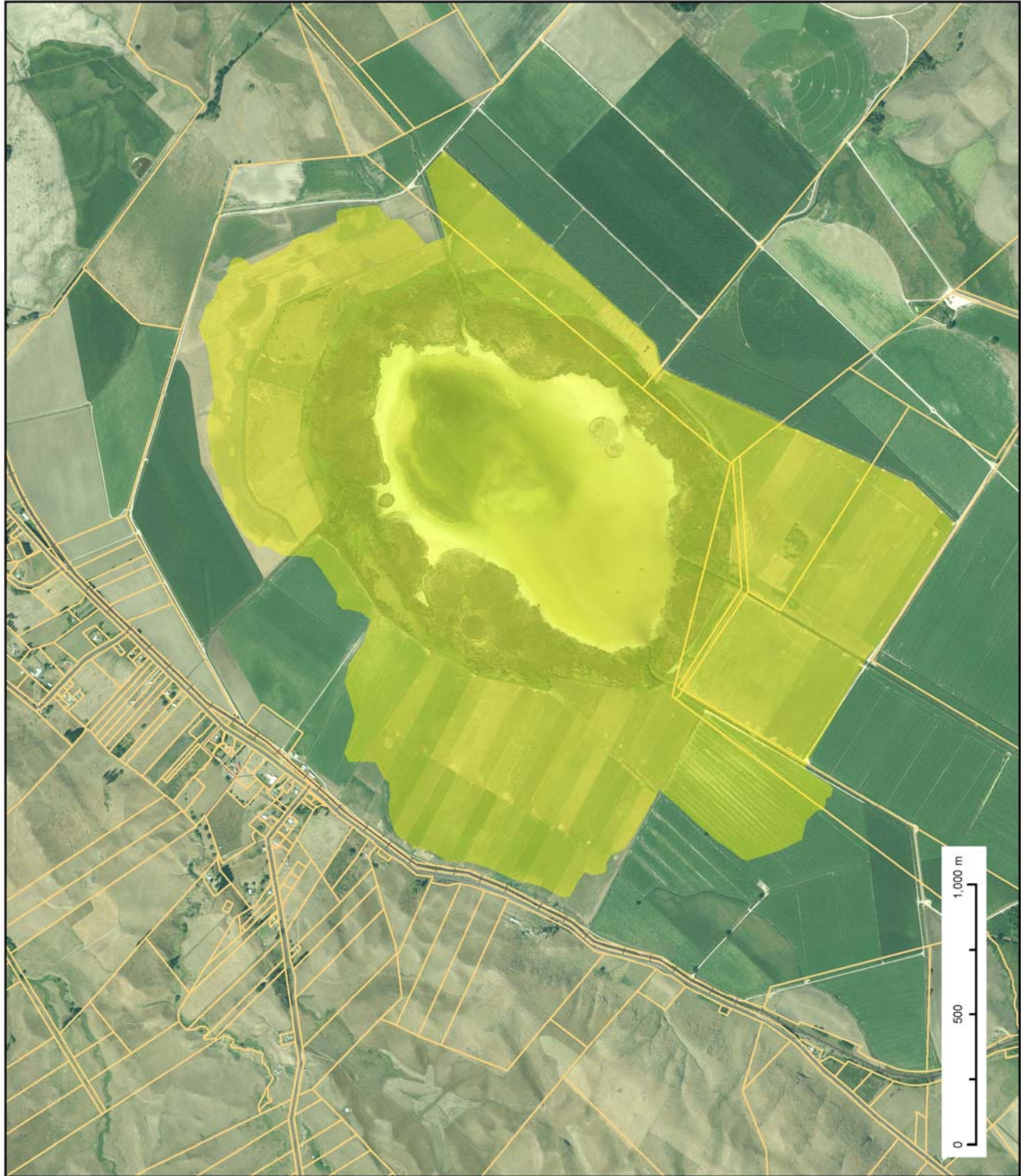
LIMITATIONS AND COPYRIGHT

This map may not be reproduced or transmitted to any other party, in any form or by any means, electronic, mechanical, photocopying, recording or otherwise, without the written permission of the copyright holder.

DISCLAIMER

The Hawke's Bay Regional Council cannot guarantee that the data shown on this map is 100% accurate.

Date Printed: 11/10/2018



Schedule 24b
Lake Poukawa 'wetland'

Legend

- Area referred in 'Wetland' definition
- Property boundary

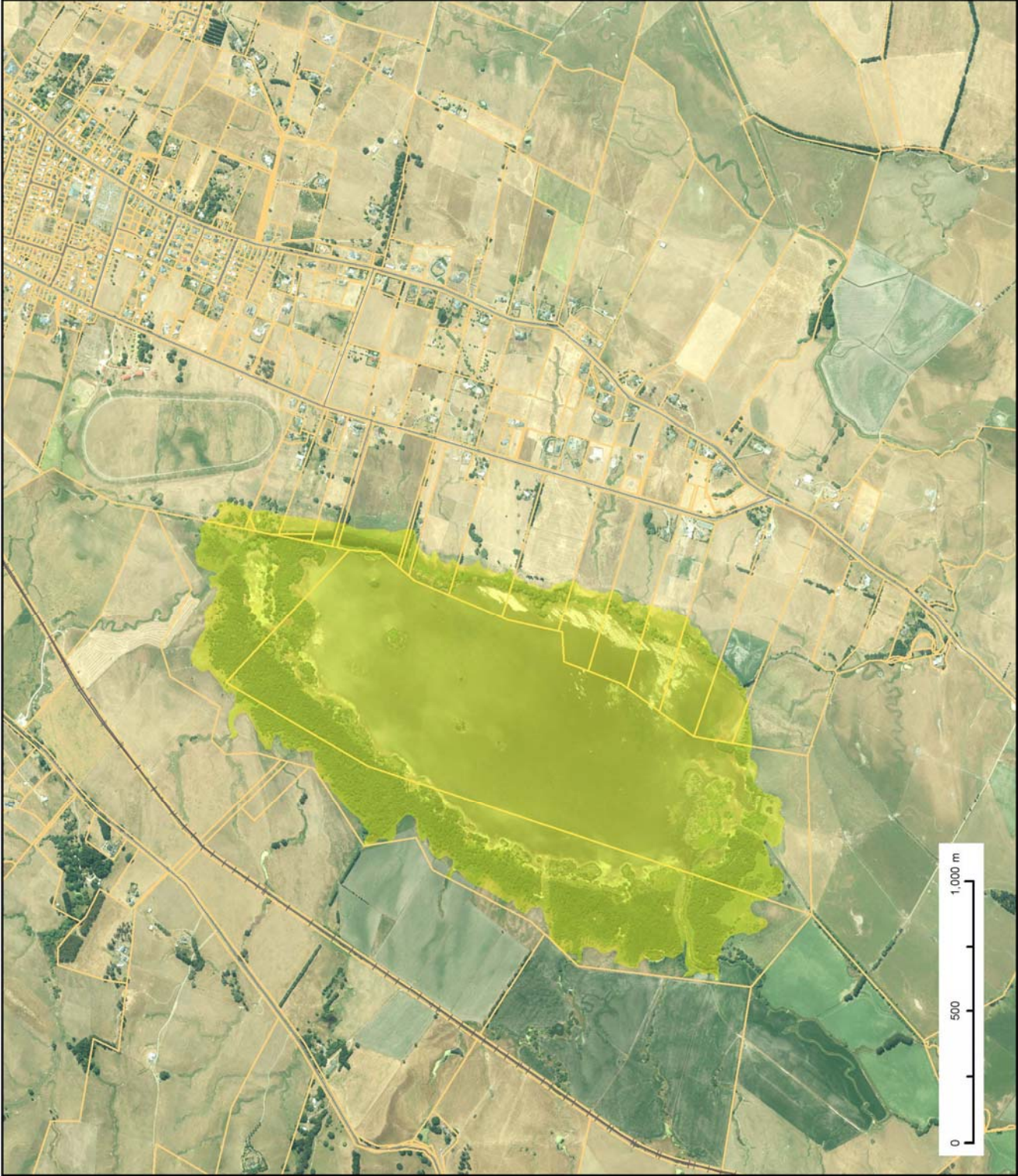


DATA FROM: Farm information obtained from the Hawke's Bay Regional Council's Geographic Information Systems Database.

LIMITATIONS AND COPYRIGHT
 This map may not be reproduced or transmitted to any other party, in any form or by any means, electronic, mechanical, photocopying, recording or otherwise, without the written permission of the copyright holder.

DISCLAIMER
 The Hawke's Bay Regional Council cannot guarantee that the data shown on this map is 100% accurate.

Date Printed: 11/10/2018



Schedule 24c
Lake Whatuma 'wetland'

Legend

- Area referred in 'Wetland' definition
- Property boundary



DATA FROM: Farm information obtained from the Hawke's Bay Regional Council's Geographic Information Systems Database.

LIMITATIONS AND COPYRIGHT
 This map may not be reproduced or transmitted to any other party, in any form or by any means, electronic, mechanical, photocopying, recording or otherwise, without the written permission of the copyright holder.

DISCLAIMER
 The Hawke's Bay Regional Council cannot guarantee that the data shown on this map is 100% accurate.

Date Printed: 11/10/2018



Schedule 24d

Wanstead 'wetland'

Legend

- Area referred in 'Wetland' definition
- Property boundary



DATA FROM: Farm information obtained from the Hawke's Bay Regional Council's Geographic Information Systems Database.

LIMITATIONS AND COPYRIGHT

This map may not be reproduced or transmitted to any other party, in any form or by any means, electronic, mechanical, photocopying, recording or otherwise, without the written permission of the copyright holder.

DISCLAIMER

The Hawke's Bay Regional Council cannot guarantee that the data shown on this map is 100% accurate.

Date Printed: 11/10/2018