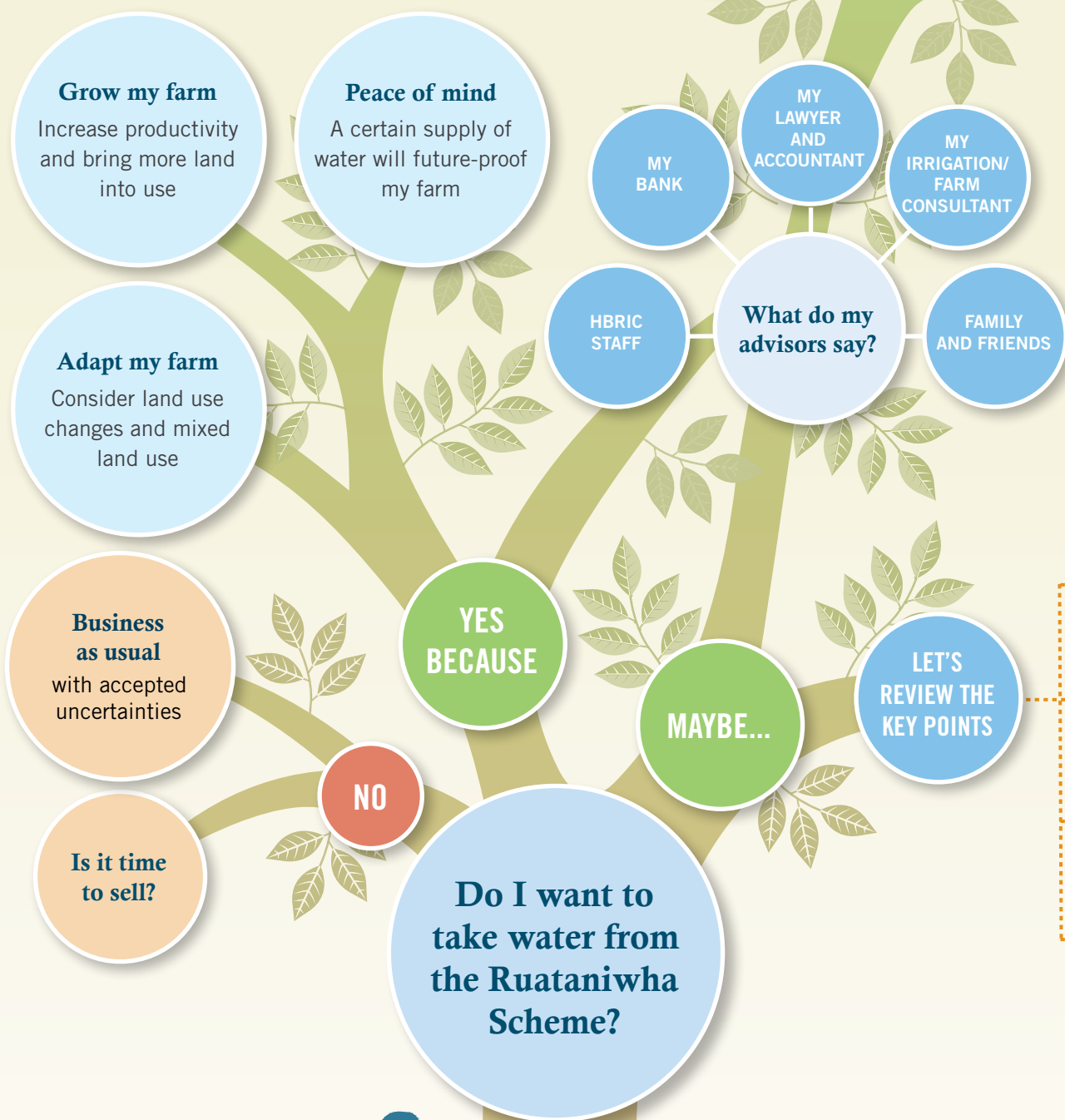


The Decision Tree

Farmers have considered a range of factors leading to their decision to take water from the Ruataniwha Water Storage Scheme.

The Scheme is a long-term, sustainable water supply solution for Central Hawke's Bay. It is part of a wider programme to better manage water resources in the Tukituki Catchment.

Under the Scheme, water is pumped under pressure through a network of pipes to the farm gate, much like town supply.



The Scheme offers some key advantages:

- A reliable water supply for the farm
- Access to water not currently available
- Options to diversify into other land uses
- An opportunity to increase productivity on the farm



HAWKE'S BAY REGIONAL INVESTMENT COMPANY LTD

