



Issue 23

Meeting 42

26 July 2018

## Tūtaekurī, Ahuriri Estuary, Ngaruroro, Karamū – the TANK Plan

In the words of Barry Manilow: “looks like we made it!”

The last meeting of the TANK Group ran ‘business as usual’ in the steady mahi of creating the policy for a workable TANK Plan. There was an element of disbelief in reaching the end of meeting 42 😊 😊.

The TANK Group has now had its last meeting, but the work of the TANK Plan Change continues. We encourage people to continue to be informed and updated through ThinkTANK. Opportunities for submissions will be coming up soon.

We will continue to produce ThinkTANK and would be very pleased if people continue to share it and keep giving us feedback. Many, many thanks for your support so far!

### **TANK Update**

“This is the last TANK meeting,” confirmed Tom Skerman, and said, “We’ve gone as far as we can go, to the point that some of the comments we’re now seeing on the draft Plan look like submissions, which is the next sequence in this process.”

Tom said the impressive efforts of the group members would be acknowledged and the Group formally thanked by the Council at an event in August.

The next stage in this TANK process would be to introduce the TANK draft Plan Change to the Council through Governance workshops. There were some aspects of the draft Plan Change where the members were unable to reach consensus and decisions about these matters would need to be made before the draft was ready for public consultation.

The TANK Group may be asked for further input before decisions are made about EITHER a draft for consultation OR a proposed plan change for notification.

Submissions will also be sought from the wider community, before implementation occurs.

“Some very hard work around the TANK Group table over these last six years has produced a valuable and comprehensive document which can work,” added Tom.

## Stormwater Update



Stormwater Working Group members – this photo was taken during a field trip stop-off to visit Lowe's Pit, Omaha.

Regional Council's Rina Douglas gave an update on the work of the Stormwater Working Group and technical staff from the councils, who have worked hard to draft, consider, refine and feed back on draft rules.

The rules cover: 1 - the diversion and discharge of stormwater into water or on land from new and existing small-scale and residential activities, 2 - city/ district council stormwater networks, 3 - low risk industrial or trade premises, and 4 - medium and high risk industrial or trade premises.

The TANK Group used this session to ask questions, and comment and get clarification on the reasoning behind this draft policy. A valuable discussion followed, with a number of comments and suggested policy amendments to be incorporated into the draft Plan Change.

The TANK group were all very supportive of the new stormwater management measures that were to be included in the draft Plan Change.

## Joint Working Group on Drinking Water

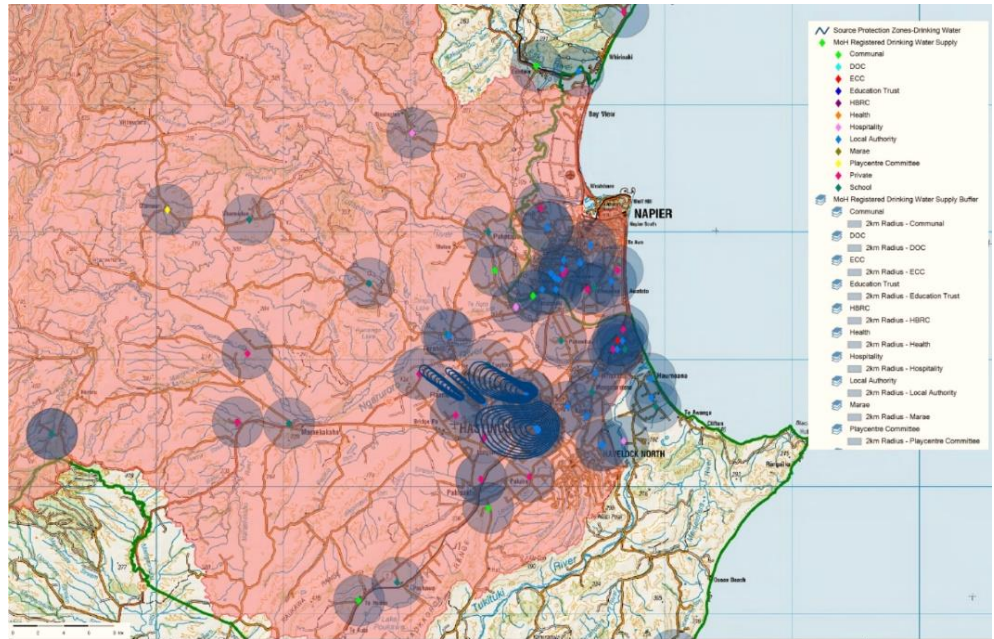
Hastings District Council's Craig Thew and HB District Health Board's Dr Nick Jones went through the recommendations from this Joint Working Group. The JWG includes representatives from the local authorities, Regional Council, District Health Board and mana whenua. It was established to act on recommendations arising out of the Havelock North water inquiry.

The JWG has noted the evidence that the water beneath our feet cannot be considered either protected or pure. The chemical/ nutrient components of water varies from bore to bore, due to many factors including aquifer pathway, age, land use effects, etc.

The recommendations from the JWG are for a new policy to guide decisions about resource consents in Source Protection Zones and for additional controls to be imposed on activities that may cause an increased risk to community water supplies. These controls would apply to activities inside Source Protection Zones (SPZs – the wider area around a water take location where other interference with the aquifer could affect water quality). The controls would apply to a number of specific activities including vegetation clearance, onsite wastewater disposal (septic tanks), stormwater discharges, bore drilling, feedlots, storage of stock feed and compost, and management of solid waste. Farm Plans for any properties in the SPZ would be subject to additional requirements. Further technical refinements were required before these measures were finalised.

The TANK members largely supported these changes to protect drinking water.

Drinking Water Map: (right) Current Ministry of Health registered drinking water supplies, with 2km radius zones.

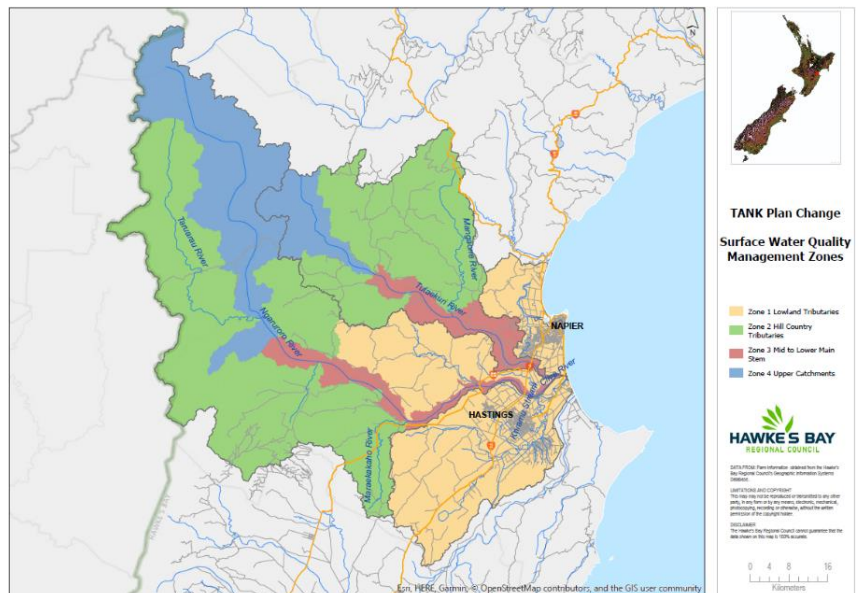


## Water Quality Attributes

The Regional Council's Sandy Haidekker answered questions on the water quality attribute tables developed for TANK.

A primary table included the targets to improve overall freshwater quality by 2040, tied to the four management zones already familiar to the TANK Group (see lower right). A second table contained a subsequent series of more ambitious targets which could come into effect once the primary table objectives have been met. The consequence of limits or targets not being met, or of exceedences was raised for the project team to consider.

*Lowland tributaries - yellow; Mid/Lower - red; Hill country - green; Upper - blue*



## Draft TANK Plan

Mary-Anne Baker led the TANK Group through a discussion of currently unresolved issues, to be included in the draft TANK Plan. These were discussed in more detail and further feedback was provided about:

- Managing Land Use Change and identifying when land use change would require a consent.
- Reserving 20% of the available high-flow allocation for iwi to take/ store/ use for the development of Māori social, cultural and economic well-being. The potential requirement for 10% of high-flow storage to provide for ecological/ environmental benefit.
- What measures were in place to guide decisions if the management framework did not deliver the outcomes expected and the inclusion of a review policy to address this.
- Areas of non-consensus were also discussed further and the significant ones still include:
  - low flow enhancement for the lowland streams
  - provisions for water storage and damming
  - minimum flow triggers for the Ngaruroro and Tūtaekurī Rivers.

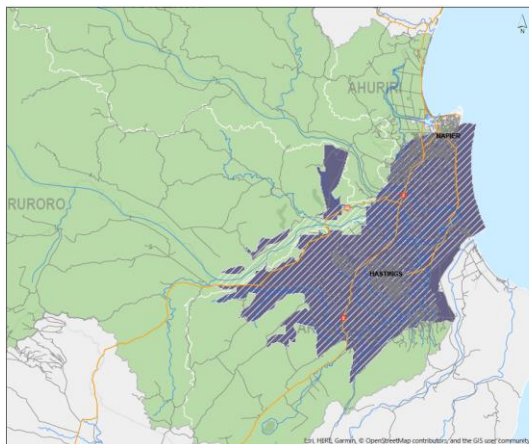


## Planning Maps

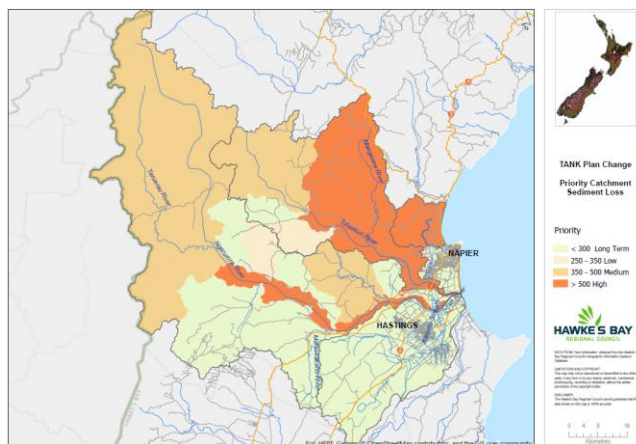
The project team have circulated a range of draft planning maps, to help to show and support the rules and implementation of the plan. Any feedback on these can be sent to [ceri.edmonds@hbrc.govt.nz](mailto:ceri.edmonds@hbrc.govt.nz).

A significant concern was raised about the size and scale of the freshwater management units and what that might mean relative to monitoring and reporting. Further work is still needed to refine the boundaries and labels for the management units.

There are now a range of 'TANK' maps for the Heretaunga Plains groundwater zones, the individual catchments, and the priority catchments to address sediment and nutrient loss. A map of the waterway areas with low levels of oxygen, i.e. making life tough for fish, eels and other aquatic life, is yet to come.



Heretaunga Plains Groundwater Zones



Priority catchment sediment loss areas



Maps are available covering each of the Tūtaekurī, Ahuriri, Ngaruroro and Karamū catchments.

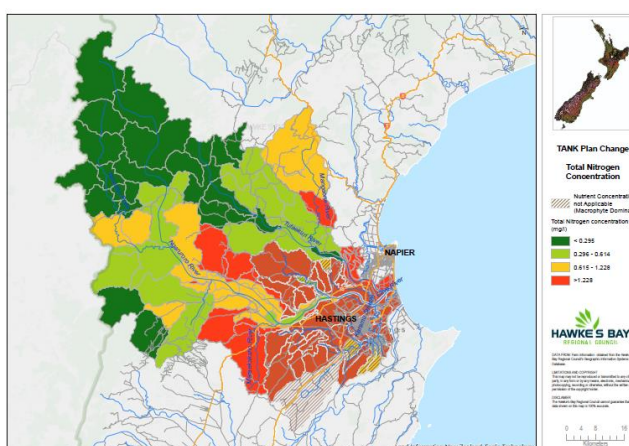
## Draft TANK Implementation Plan

TANK Group members were asked again for feedback and input to the draft TANK Implementation Plan, and to send this straight to Ceri Edmonds at [ceri.edmonds@hbrc.govt.nz](mailto:ceri.edmonds@hbrc.govt.nz).

## Beyond TANK 42

TANK Group members are invited to celebrate the conclusion of this piece of the TANK puzzle, on 9 August.

Total Nitrogen Concentrations



hbrc.govt.nz search: #tankresources

© 2018, HBRC

Please share this newsletter-panui

[Mary-Anne.Baker@hbrc.govt.nz](mailto:Mary-Anne.Baker@hbrc.govt.nz)

**TANK**   
Safe, secure water for Heretaunga Plains