



Time for the Heavy Lifting

The last two meetings have been pretty heavy going as the Group starts to make decisions about the specific values and attributes of individual rivers and their tributaries. This has generated healthy discussion and, importantly, raises questions along the way. Some can be answered now, and some will be answered as we go along.

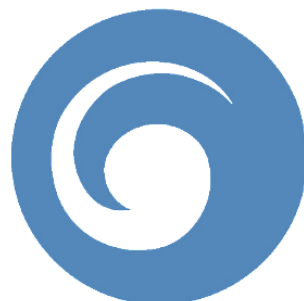
6 July 2016

To give a better view of this process, TANK's webpage carries the meeting notes, visuals and other documents, such as this newsletter - the first of many. There will be plenty of opportunities for feedback, comments and questions along the way, and we encourage you to 'add your ten cents worth' (50, \$1, \$10) at any stage.



WORKING GROUPS

These will help to meet the target dates to prepare a draft plan change for Regional Planning Committee approval. The TANK Group membership and Working Group list is on the [TANK](#) page.



TANGATA WHENUA

HBRC is working with Ngati Kahungunu Iwi Incorporated (NKII) and Te Taiwhenua o Heretaunga on a Ngaruroro River Values and Attributes report to help refine and complete the TANK values. There is much more to come on this area of work.



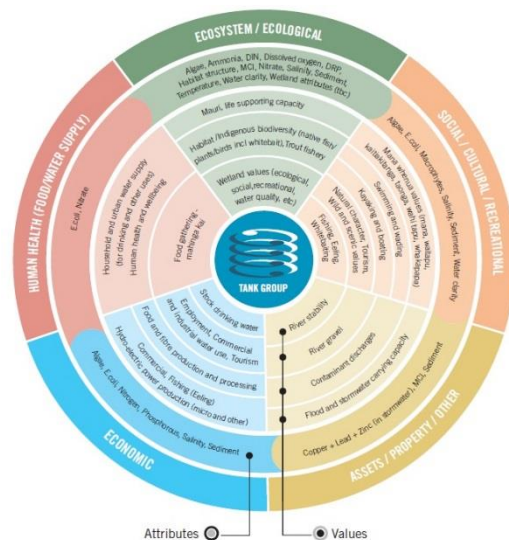
SCIENCE

Land use, water quantity and quality connection modelling, and work to understand environmental data is full steam ahead. TANK members are getting the Latest modelling and science programme information.

VALUES & ATTRIBUTES

Water quality needs to satisfy a range of uses and values in the TANK catchments. The Group is in the process of assigning values to manage Ngaruroro River and its tributaries. The biggest implications for water quality management are ecosystem values, and the social and recreational values of swimming/immersion, fishing and mahinga kai.

Water quality is often expressed through attributes - things we measure or monitor - to make sure values can be met. A separate project to understand Māori values and explore other ways tāngata whenua might measure or monitor water quality will help TANK in its work. The attributes being considered now are algae, dissolved reactive phosphorus (DRP) and dissolved inorganic nitrogen (DIN) which have the most effect on algae growth. Nitrate and ammonia are parts of DIN and at high concentrations they become toxic to stream life. Other attributes are *E.coli* - which signal risk to human health when people are active on or in the river - water clarity and turbidity, and MCI (Macro Invertebrate Index), where you see how healthy a stream is by looking at small insects and bugs in the water. The work is summarised in a Water Quality Values and Attributes wheel.



The Group will refer to the National Objectives Framework (from the National Policy Statement for Freshwater Management NPSFM) and other national guidelines to help choose a desired state for each attribute, such as ANZECC* guidelines, Ministry for the Environment Guidelines and scientific publications.

The Group is being guided by NPSFM so that water quality is not degraded or is improved where necessary relating to specific values.

*ANZECC Guidelines are the Australian New Zealand Environment & Conservation Council Guidelines for Fresh and Marine Water Quality

The water quality of Ngaruroro River itself mostly meets the needs of all its values, although algae cover may be an issue at times in lower areas. Some tributaries have elevated *E.coli* and algae-cover. The data on algae cover is limited and also influenced by two recent drier-than-normal summers.



TANK MEMBER PROFILE

I am Bruce Mackay, an Agronomist at Heinz-Watties Limited, with 35 years' experience in Hawke's Bay's primary industry.

I got involved in TANK at the outset, invited by Horticulture New Zealand. My passions are family, our location and climate, and all the wonderful things we do here. I realise that our resources - especially water - are under increasing pressure, but believe that the collaborative approach demanded by this process will make policy outcomes for resource management better. While some may say my main interest is the primary production sector and ensuring their interests are

represented, I am like everyone in the Group, endeavouring to make our place better when we leave, than when we arrived.

I invite anyone to talk with me about TANK and I can help represent their opinions.

WATER QUANTITY

Water Quantity attributes have not been forgotten. The TANK Group will look at those later in 2016. Quality and quantity attributes will then be reviewed together, with the implications (costs to landowners and impacts on the community) of mitigation measures necessary to achieve management objectives.

COMING UP, the Group will consider in detail:

- whether current water quality state for each attribute currently meets the needs of identified values
- whether there are risks to water quality - will it change with possible changes to land use?
- if quality is not good enough, what might be needed to improve it?